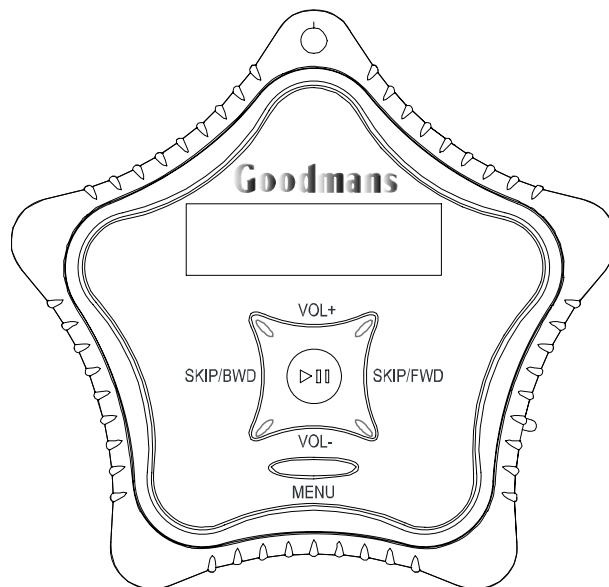


# Goodmans

## GMP31M2/GMP32M2/GMP35M2 INSTRUCTION MANUAL



Before operating this unit  
Please read this Instruction Manual carefully

**[www.goodmans.co.uk](http://www.goodmans.co.uk)**

GOODMANS Product Information Helpline

**08708730080**

## Introduction

Thank you for purchasing this **Goodmans** product.

This product provides the following key functions, details of which are described in the following pages.

- **MP3/WMA WMA-DRM9 & DRM10 Format Files playback**
- **Voice recording** - The unit can record voice through the internal microphone encoding directly into WAV format.
- **Universal storage** - the unit can operate as a mass storage device and can be used for file storage i.e. between work and home etc.
- **Direct PC compatibility** - operates without the need to install driver software on Windows ME/2000/XP and comes complete with a driver for use Windows 98SE
- **Sound Enhancement Equaliser patterns** - inbuilt equaliser for Natural, Rock, Pop, Classic, Soft, Jazz and DBB effects.

To transfer purchased tracks (WMA DRM encoded) from most online music download services to this device Windows Media Player 10 must be used.

**Note:** this is exclusively available with Windows XP alternatively use the application recommended by the online music download service

**NOTE:** Services and applications must be Windows Media audio-compliant and support Digital Rights Management. Windows XP required. Apple iTunes music content is NOT supported.

This instruction manual is important. Please read it, in a short time it will show how to connect, operate and adjust the unit for best performance.

It can also save money, it shows simple things to do and check before calling us for assistance.

# Table of Contents

## TABLE OF CONTENTS

Introduction.....	1
Table of Contents.....	2
System Requirements.....	3
Important Notes.....	4
Overview of General Controls.....	5
Setting Up Your Computer.....	7
Transferring Audio and Data.....	9
Disconnecting Your Player.....	11
What is DRM ? .....	12
DRM Operation.....	13
Getting Started.....	15
Music Playback Operation.....	16
Voice Recording Operation.....	19
Voice Playback Operation.....	20
Advanced Settings and Functions.....	21
Troubleshooting Guide.....	23
Product Specifications.....	24

## YOUR PACKAGE INCLUDES THE FOLLOWING COMPONENTS:

- 1 x Main Unit
- 1 x Earphone with strap
- 1 x USB Cable
- 1 x Instruction Manual
- 1 x AAA Battery
- 1 x Installation Driver CD

**NOTE:** Please retain all packaging materials for future transportation or in the unlikely event the product should need to be returned for repair.

# System Requirements

## HARDWARE AND SOFTWARE REQUIREMENTS

Computer	IBM PC/AT-Compatible (not operable with Macintosh)
Operating System	Microsoft® Windows® 98SE/ME/2000 Professional/ XP Home Edition standard install
CPU	Windows® XP Professional/XP Home Edition Pentium® II 300 MHz or higher Windows ® Millennium Edition, 2000 Professional, MMX® Pentium® 233 MHz or higher
Memory	64MB minimum (128MB or more recommended for Windows XP)
Hard disk space	10MB minimum required
Drive	CD-ROM drive
Interface	Available USB Port
Display	1024 x 768 pixels or better, higher colour (16-bit) or better

## SECURED MUSIC DOWNLOAD REQUIREMENT

O/S:	Windows XP SP1* or higher (Note: SP = Service Pack)
Software:	Windows Media Player 10.0 or higher ( <i>Windows Media Player 10.0 is only available for Windows XP users</i> )

### NOTES:

- Operation is not guaranteed on all the compatible PCs.
- Operation is not guaranteed on computers running upgraded OS or multiple OS with dual-boot. NTFS format can be used for standard installation only.
- Depending on the Windows version, more free space maybe necessary. Music data also requires more space.

## Important Notes

Your hearing is important to you and to us so please take care when operating this equipment. It is strongly recommended that you follow the listed guidelines in order to prevent possible damage or loss of hearing.

### ESTABLISH A SAFE SOUND LEVEL

- Over time your hearing will adapt to continuous loud sounds and will give the impression that the volume has in fact been reduced. What seems normal to you may in fact be harmful. To guard against this **BEFORE YOUR HEARING ADAPTS** set the volume at a low level.
- Slowly increase the level until you can hear comfortably and clearly and without distortion.
- Damage to your hearing is accumulative and is irreversible.
- Any ringing or discomfort in the ears indicates that the volume is too loud.

**Once you have established a comfortable listening level, DO NOT INCREASE THE SOUND LEVEL FURTHER.**

The following list of typical sound levels may assist you in recognising just how loud you have set the volume level.

### DECIBEL

Level dB	Example
30dB	Quiet library, soft whisper
40dB	Living room, fridge freezer bedroom away from traffic
50dB	Normal conversation, quiet office, light traffic
60dB	Electric sewing machine
70dB	Vacuum cleaner, hair dryer, noisy restaurant

### THE FOLLOWING NOISE CAN BE HARMFUL UNDER CONSTANT EXPOSURE

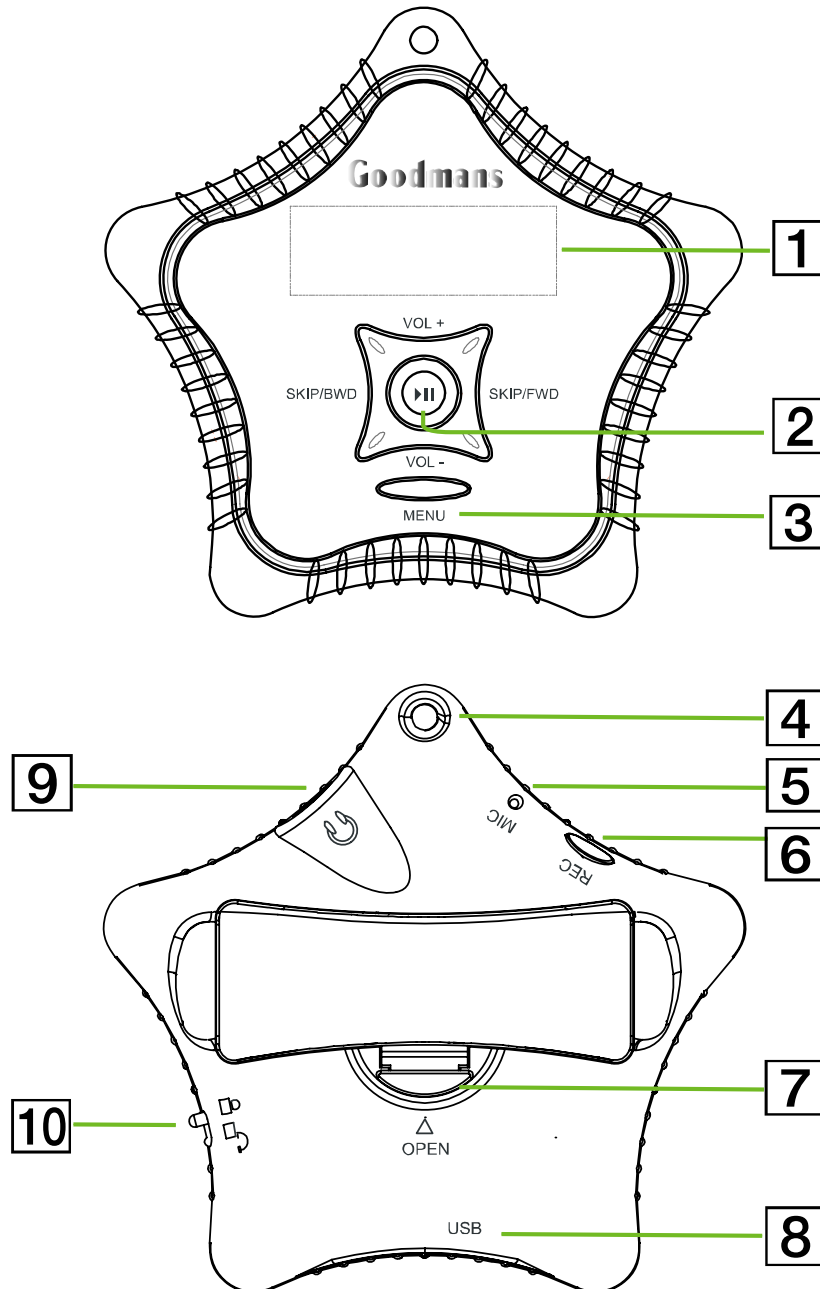
80dB	Average city traffic, alarm clock buzzer at 2 feet, food mixer
90dB	Motorcycle, heavy goods vehicle, petrol lawn mower
100dB	Pneumatic drill, chain saw, garbage truck, discotec / night-club
120dB	Rock band concert, thunderclap

### PERMANENT LOSS OF HEARING

140dB	THRESHOLD OF PAIN Gunshot 2 feet way
180dB	Rocket launching pad

# Overview of General Controls

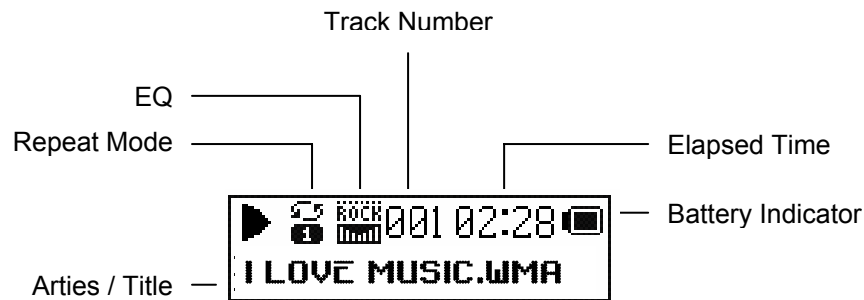
## LOCATION OF CONTROLS



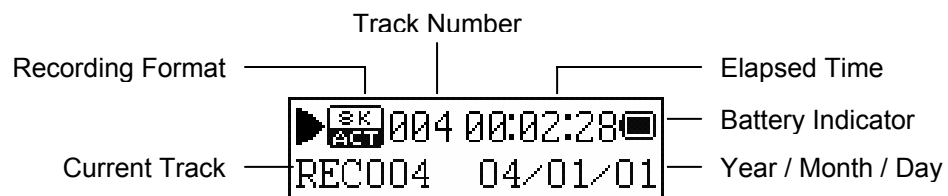
- |                                       |                                    |
|---------------------------------------|------------------------------------|
| <b>1</b> LCD Display                  | <b>6</b> REC Button                |
| <b>2</b> Jog Switch (Play/Pause/Stop) | <b>7</b> Battery Compartment Cover |
| <b>3</b> MENU Button                  | <b>8</b> USB Socket                |
| <b>4</b> Strap Connecting Loop        | <b>9</b> Earphone Socket           |
| <b>5</b> Inbuilt Microphone           | <b>10</b> HOLD Switch              |

## Overview of General Controls (contd.)

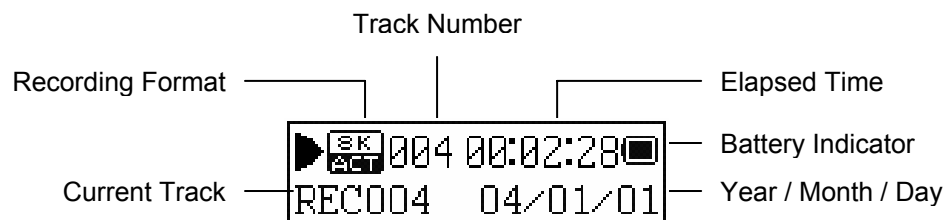
### DISPLAY ICONS DURING MUSIC PLAYBACK



### DISPLAY ICONS DURING VOICE RECORDING



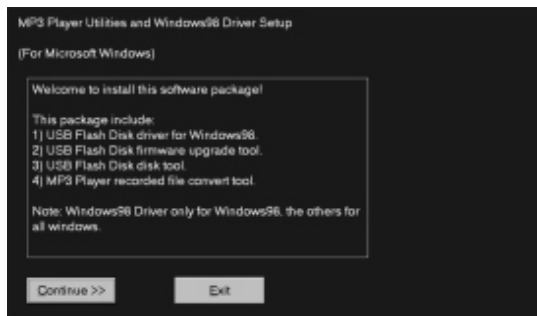
### DISPLAY ICONS DURING VOICE PLAYBACK



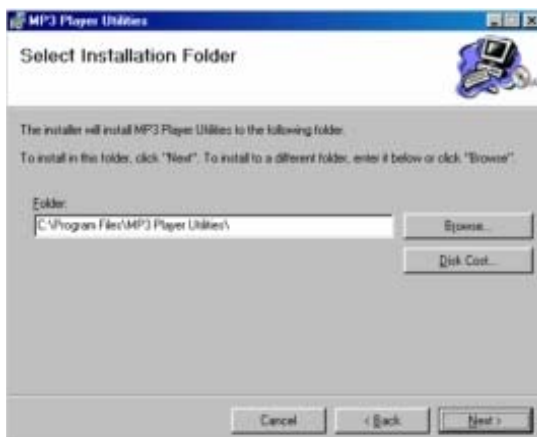
# Setting Up Your Computer

## FOR WINDOWS 98

1. Start up Windows and insert the CD (setup software driver for Windows 98) into the drive.
2. Run the program setup.exe from the disk drive, the installation icon will appear on the desktop. Press "NEXT" to start installation.



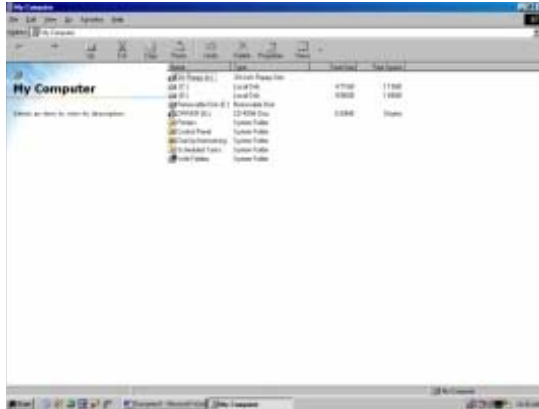
3. Press "NEXT" to accept the default install location for the driver.





## Setting Up Your Computer (contd.)

4. Connect the MP3 player to your PC, the “New Hardware Found” message will pop up. You will find a removable driver under “My Computer”



5. To uninstall the software, click “START” and enter into “Control Panel” and select “Add / Remove Program”, then select “MP3 Player Utilities” from the menu and click on “Add / Remove”



**FOR WINDOWS 2000/ ME/ XP**

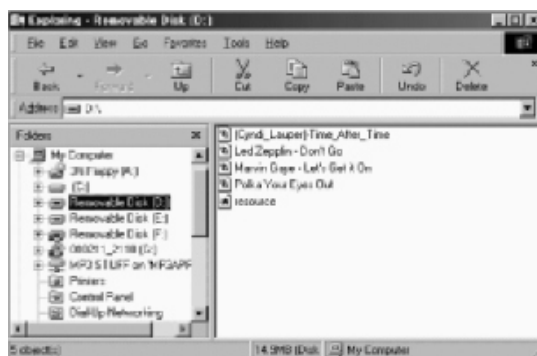
1. Windows 2000/ ME/ XP do not need driver installation. Just plug in the MP3 Player to the computer, Windows will detect the driver automatically and pop up with a message “New Hardware Found” and “USB Mass Storage Device” will be installed.
2. A Removable Disk will show in “My Computer”, normally as the E: drive, but the actual letter is dependant on how many drives are already installed.

## Transferring Audio and Data

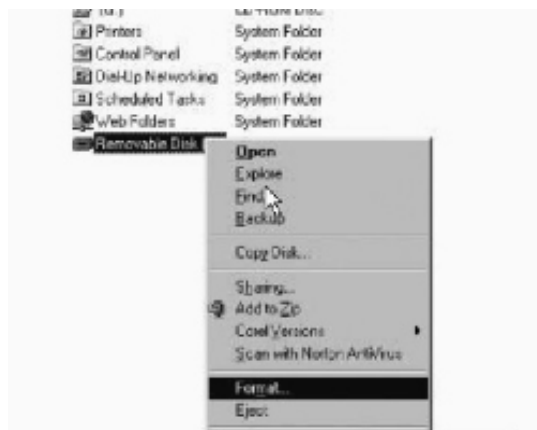
When you wish to download additional music tracks to your player, you can either download music tracks from an Internet Music Site or rip them from your audio CDs to create digital files on your computer and then transferred to your player via your computer. Data files can also be transferred to and stored in your player, for example, you can transfer a data file from one computer to another.

### TO TRANSFER AUDIO AND DATA - for MP3, WMA (Non-DRM)

1. Please ensure that one AAA battery is inserted otherwise data corruption may occur if the power fails during transfer.
2. Connect your player to the USB port of your computer using the supplied USB cable.
3. Windows Device Manager will recognize the MP3 player.
4. Launch Windows Explorer.
5. "Removable Disk" will appear under "My Computer".



6. To format the onboard memory before downloading songs to the MP3 player, go to "My Computer" and right click on the "Removable Disk", then click on "Format".



## Transferring Audio and Data (contd.)

7. It will launch a format dialogue box, if there is a file system option please ensure that FAT is selected (NOT FAT32), then click on START to format your player.



### WARNING

EVER USE OTHER SOFTWARE TO FORMAT THE PLAYER. THIS WAY CAUSE AN IRREVERSIBLE MALFUNCTION

**NOTE:** If you have selected a different file system to FAT on “File System” option when for formatting, it may cause a malfunction. Please re-format it using the “**FAT**” option to repair.

8. To load files onto your player double click on the Removable Device icon under “My Computer” to open drive. Select the files that you wish to load onto the player by highlighting them and then drag and drop them into this removable drive window.
9. Before disconnecting your player from the computer follow the instructions below “**Disconnecting Your Player**”.

**NOTE:** Always follow the instructions given in “Disconnecting Your Player” before unplugging the player from the PC otherwise the data stored on the player may be corrupted.

## Disconnecting Your Player

### TO STOP YOUR PLAYER IN WINDOWS XP/ ME/ 2000

(for Mass Storage Mode only):

Double click on the **Safely Remove Hardware** icon on the taskbar, ensure that the USB MASS STORAGE DEVICE is highlighted and click on the "STOP" button, and then confirm by clicking on the "OK" button and disconnect your player when you are prompted.

### TO STOP YOUR PLAYER IN WINDOWS 98SE

In Windows Explore, right click the Removable Disk icon, click the Eject icon and disconnect your player when you are prompted.

## What is DRM ?

DRM is Digital Rights Management, it is a way of protecting copyrighted material in digital age. It has come about due to the easy of copying material using digital methods. Basically the DRM encryption will limit usage of the file to certain hardware that is compatible with DRM encryption. This does not mean that a DRM encrypted file cannot be downloaded to Non-DRM compatible hardware only that the file will not play.

DRM can also be used to set the number of times that file can be burned to CD, how many different pieces of hardware/equipment it can be copied to etc. In the most recent version of the DRM (DRM10) there is also an option to set how long the file can be used for. This time restriction is a method that is currently used by some Music Download websites.

**NOTE:** DRM10 files can only be used when your player is connected to a PC running **Windows XP** and **Windows Media Player 10**

## DRM Operation

Your player is compatible with both DRM9 and DRM10 encrypted files. These files are normally obtained from Music Download websites. The following instructions are only given as a guide, please check with your content provider for any specific procedure for use with their services.

**NOTE:** DRM files cannot be downloaded using mass storage drag and drop, if the files are transferred using this method they will not play. Before downloading DRM10 encrypted files the DRM time must be set. Please follow the instructions "**Setting DRM Time**" below.

DRM10 files can only be downloaded to the player when the player connects as "MEDIA DEVICE" this allows the player to be "Synchronised" with the computer to allow playback. This is the default mode that the unit is set to when connecting to a computer with Windows XP. When in this mode files cannot be "dragged and dropped" as they can in USB DISK. The mode can be changed to USB DISK via the "**USB MODE**" SYSTEM menu (please see "SYSTEM MENU" section below). When set to USB DISK mode DRM10 encrypted files will not play when transferred in the player.

**NOTE:** DRM files cannot be downloaded using mass storage drag and drop, if the files are transferred using this method they will not play. Before downloading DRM10 encrypted files the DRM time must be set. Please follow the instructions "**Setting DRM Time**" below.

## DOWNLOADING DRM10 ENCODED FILES

The following has been extracted from the Windows Media Player 10 Help file © Microsoft.

When you connect your device to your computer for the first, Windows Media Player starts the Device Setup Wizard, which helps you setup automatic or manual synchronisation between the Player and your device.

When you connect your device to your computer after automatic synchronisation has been established, the Player and the device begin synchronising the content you selected, until all of the items are synchronised. If the Player detects that your device does not have enough room to store all of the automatically synchronised content, the Player and the device will synchronise content in priority order, either by default priority order or by a priority order that you select.

When you connect your device to your computer after manual synchronisation has been established, you must select the content and specify the order in which it is synchronised. If the Player detects that your device does not have enough room to store all the manually synchronised content, it will display a message next to the items that it cannot synchronise to your device.

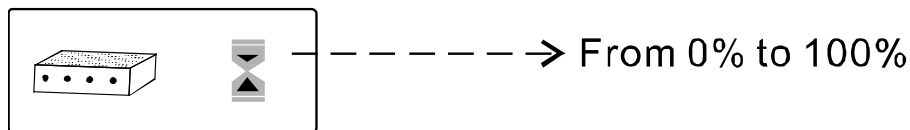
## DRM Operation (contd.)

You can change the synchronisation order or delete items from the synchronisation list, and then start synchronisation manually.

When synchronisation finished, the message “Synchronisation is complete” is displayed above the Items to Sync pane (the left side of **Sync**) and two types of categories are displayed in the Items to Sync pane:

The number of items that were synchronised successfully and the number of items that were not synchronised due to errors, along with the error details. There may be more than one error category displayed if different types of errors occurred during synchronisation. You can expand these categories to view the individual items that failed to synchronise due to errors and take the appropriate steps. You can also view the synchronised files on the device by expanding the category or playlist that contains the items in the Items on Device pan (the right side of **Sync**).

After the desired files have been downloaded to the player, disconnect the player from the computer and the following will be shown in the display:



This screen is shown when the player synchronise the licenses that allow the DRM10 encoded files to be played. This process can take several minutes. Once this screen is no longer shown you can now play your downloaded tracks.

For full instructions on using Windows Media Player 10 to synchronise files to your player please consult the help file that is supplied with Windows Media Player 10.

## Getting Started

### INSERTING THE BATTERY

Open the battery compartment cover and insert 1 x AAA Alkaline battery observing the correct polarity as shown in the battery compartment. Refit the battery compartment cover.



Connect the supplied earphone to the earphone socket on the player and attach the security strap to the strap connecting loop.

### SWITCHING THE POWER ON/OFF

To switch the player **ON** first ensure the HOLD switch is in the Off position then press and hold the **▶|| PLAY/PAUSE/STOP** button for more than 2 seconds. The start-up screen logo appears.

To switch the player **OFF** firstly ensure the HOLD switch is in the Off position then press and hold the **▶|| PLAY/PAUSE/STOP** button for more than 2 seconds.

### VOLUME CONTROL

During playback use the **VOL +** or **VOL -** buttons (Jog Switch up/down) to increase or decrease the volume level through the earpieces.

### HOLD FUNCTION

This feature enables the locking of the buttons on the unit to prevent accidental operation during use and transportation. To activate move the **HOLD** switch on the side of the unit to the **ON** (UP) position the HOLD will show in the display.



To unlock the buttons move the **HOLD** switch to the OFF (DOWN) position. If the hold function is active "**HOLD**" will appear in the display if any button is pressed.



# Music Playback Operation

## MUSIC PLAYBACK OPERATIONS

Basic Operations	Controls to Press
Playback start and pause	Press the Jog Switch in the centre ►
Pause playback	Press the Jog Switch in the centre ►
Stop playback	Press the Jog Switch in the centre ►   briefly
Go to the next track	Move the Jog Switch <b>Right</b>
Go to the previous track	Move the Jog Switch <b>Left</b>
Search forward	Press and hold the Jog Switch <b>Right</b>
Search backwards	Press and hold the Jog Switch <b>Left</b>
Increase the volume	Move the Jog Switch <b>Up (VOL+)</b>
Decrease the volume	Move the Jog Switch <b>Down (VOL-)</b>
Display the submenu during music playback	Press the <b>MENU</b> button briefly during music playback to display Music Playback submenu

To access the main menu, press and hold the **MENU** button, the following icons will show in display.



The options are described as below:



MUSIC

This is the default mode that is selected when the player is switched ON and is used for playback of MP3/WMA files



VOICE RECORD

To make a voice recording using the inbuilt Microphone



VOICE RECORD PLAYBACK

To playback any voice recordings already made



SYSTEM MENU

To change the preference settings

For details please refer to the section of **Advanced Settings and Functions**








## Music Playback Operation (contd.)

### REPEAT FUNCTION

During music playback it is possible to select repeat play of one or all tracks.

1. Press the **MENU** button briefly during music playback to display the Music Playback menu.
2. Move **Jog Switch (Left/Right)** to select the **REPEAT** mode and press **▶|| PLAY/PAUSE/STOP** button to enter the **REPEAT** submenu. Select the required repeat mode using **▶|| PLAY/PAUSE/STOP** button.

#### *Submenu under “REPEAT” mode*

<i>Option</i>	<i>Icon</i>	<i>Repeat mode</i>
Normal		All tracks will be played ONCE
Repeat One		The current track will be played continuously
Folder		The current folder will be played continuously
Repeat Folder		All tracks in the current folder will be played continuously
Repeat All		All tracks will be played continuously
Random		All tracks in the current folder will be played in a random order
Intro Scan		Playback first 10 sec. of each track in the directory will be played until STOP button is pressed








3. To exit the menu, select the “EXIT” option or press the **MENU** button briefly until the normal playback is shown.

## Music Playback Operation (contd.)

### EQ SELECTION

1. To select a different EQ effect during music playback, press the **MENU** button briefly to display the Music Playback menu.
2. Move **Jog Switch (Left/Right)** to select the **EQUALIZER** options and press **▶|| PLAY/PAUSE/STOP** button to enter the **EQ** submenu. Select the required repeat mode using **▶|| PLAY/PAUSE/STOP** button.

#### *Submenu under “EQUALIZER” (EQ) mode*

<i>Option</i>	<i>Icon</i>	<i>EQ mode</i>
Natural		No preset EQ effects added
Rock		All tracks will be played in Rock equalizer
Pop		All tracks will be played in Pop equalizer
Classic		All tracks will be played in Classic equalizer
Soft		All tracks will be played in Soft equalizer
Jazz		All tracks will be played in Jazz equalizer
DBB		All tracks will be played in DBB equalizer

3. To exit the menu, select the “EXIT” option or press the **MENU** button briefly until the normal playback is shown.

## Voice Recording Operation

Voice or music data can be recorded through the inbuilt microphone. The recordings will be automatically stored in the VOICE folder which is inside the RECORD folder in the Root directory.

### VOICE RECORDING OPERATION

#### To start recording:

Switch the player ON.

Hold down the **REC** button for 2 seconds.

Recording starts.

#### To interrupt recording:

Press the **REC** button for 1 second.

To resume recording, press the **REC** button again.

#### To stop recording:

Press and hold the **REC** button for 2 seconds to stop recording.

### RECORDING QUALITY

It is possible to change the recording quality as required, to change the recording quality,

1. Press the **MENU** button briefly.
2. Move **Jog Switch (Left/Right)** to enter the **REC TYPE** submenu using **▶||** **PLAY/PAUSE/STOP** button.
3. Move **Jog Switch (Left/Right)** to select the required recording type and press **▶||** **PLAY/PAUSE/STOP** button to confirm.

#### *Submenu under "REC TYPE" mode*

Record Quality	Average storage time on		
	GMP31M2 (128MB)	GMP32M2 (256MB)	GMP35M2 (512MB)
Fine Rec	8.5 hours	17.5 hours	35 hours
Long Rec	35 hours	70 hours	140 hours
Fine Vor	8.5 hours	17.5 hours	35 hours
Long Vor	35 hours	70 hours	140 hours

4. To exit the menu, select the "EXIT" option or press the **MENU** button briefly until the normal voice record screen is shown.

# Voice Playback Operation

## PLAYING A RECORDED VOICE FILE

### To start voice playback:

Switch the player ON.

Press the **MENU** button to enter the main menu and select the Voice Record Playback icon, then scroll through the available recorded voice tracks and select the required track for playback by using ►||

### PLAY/PAUSE/STOP

Move **Jog Switch (Left/Right)** to browse the available tracks. Select the desired track and press ►|| **PLAY/PAUSE/STOP**

### To interrupt playback:

Press ►|| **PLAY/PAUSE/STOP**








To resume playback, press ►|| **PLAY/PAUSE/STOP** again.

## REPEAT FUNCTION

During voice playback it is possible to select repeat play of one or all tracks.

1. Press the **MENU** button briefly during music playback to display the Voice Playback menu.
2. Move **Jog Switch (Left/Right)** to select the **REPEAT** mode and press ►|| **PLAY/PAUSE/STOP** button to enter the **REPEAT** submenu. Select the required repeat mode using ►|| **PLAY/PAUSE/STOP** button.

### Submenu under "REPEAT" mode

Option	Icon	Repeat mode
Normal		All tracks will be played ONCE
Repeat One		The current track will be played continuously
Folder		The current folder will be played continuously
Repeat Folder		All tracks in the current folder will be played continuously
Repeat All		All tracks will be played continuously
Random		All tracks in the current folder will be played in a random order
Intro Scan		Playback first 10 sec. of each track in the directory will be played until STOP button is pressed

3. To exit the menu, select the "EXIT" option or press the **MENU** button briefly until the normal playback is shown.

## Advanced Settings and Functions

In the **SYSTEM MENU** the following functions can be accessed the bottom 7 functions are contained within the system menu.

Menu Item	Functions
Backlight Settings	Set the backlight timer
Power Off	Auto power off if no music is playing or no menu actions are taken
Contrast	Adjust display contrast level
Sleep Time	Automatically switch off after 120, 90, 60 or 30 minutes.
USB Mode	MEDIA DEVICE mode is essential if you want to transfer DRM10 encrypted music tracks to the player & USB DISK is available for any files transfers through Windows Explorer
Memory Info	Display the total amount of memory available in this player
Firmware Version	Display the firmware version of this player

### BACKLIGHT

1. Press and hold the **MENU** button to access the MAIN MENU display.
2. Use **Jog Switch (Left/Right)** to browse the MAIN MENU and select **SYSTEM** Menu, press ►|| **PLAY/PAUSE/STOP** button.
3. Use **Jog Switch (Left/Right)** to browse the **SYSTEM** submenus. Select the **BACKLIGHT** option and then use **Jog Switch (Left/Right)** to select the backlight options.
4. Press ►|| **PLAY/PAUSE/STOP** button to confirm the selection.

#### **Submenu under “BACKLIGHT”option**

<b>Options</b>	<b>Description</b>
OFF	The backlight will not come on at all
5 Sec.	The backlight will remain for 5 sec. after a button is pressed
10 Sec.	The backlight will remain for 10 sec. after a button is pressed
15 Sec.	The backlight will remain for 15 sec. after a button is pressed

## Advanced Settings and Functions (contd.)

### CONTRAST

1. Press and hold the **MENU** button to access the MAIN MENU display.
2. Use **Jog Switch (Left/Right)** to browse the MAIN MENU and select **SYSTEM** Menu, press **▶|| PLAY/PAUSE/STOP** button.
3. Use **Jog Switch (Left/Right)** to browse the **SYSTEM** submenus. Select the **CONTRAST** option and then use **Jog Switch (Left/Right)** to adjust the contrast level. The unit is set to 9 (middle setting) when first used.
4. Press **▶|| PLAY/PAUSE/STOP** button to confirm the selection.

### USB MODE (MEDIA DEVICE (for secure music) or USB Disk switching)

The USB MODE provides you the option to switch it to the **USB Disk** as an external storage device which allows you to transfer any data or music files through PC (using Windows 98SE, ME or 2000). It is essential to set it to **MEDIA DEVICE** mode while transferring the DRM10 encrypted music contents files through Windows Media Player 10 (available to **Windows XP** users only). We strongly recommend that unless connecting to an online musical rental service this unit is set in the **USB Disk**

1. Press and hold the **MENU** button to access the MAIN MENU display.
2. Use **Jog Switch (Left/Right)** to browse the MAIN MENU and select **SYSTEM** Menu, press **▶|| PLAY/PAUSE/STOP** button.
3. Use **Jog Switch (Left/Right)** to browse the **SYSTEM** submenus. Select the **USB MODE** option and then use **Jog Switch (Left/Right)** to select the option. Press **▶|| PLAY/PAUSE/STOP** button to confirm the selection.

### MEMORY INFO

1. Press and hold the **MENU** button to access the MAIN MENU display.
2. Use **Jog Switch (Left/Right)** to browse the MAIN MENU and select **SYSTEM** Menu, press **▶|| PLAY/PAUSE/STOP** button.
3. Use **Jog Switch (Left/Right)** to browse the **SYSTEM** submenus. Select the **MEMORY INFO** the display will show the total amount of memory available for this player.
4. Press **MENU** button briefly to exit and return to the **SYSTEM** menu.

### FIRMWARE VERSION

1. Press and hold the **MENU** button to access the MAIN MENU display.
2. Use **Jog Switch (Left/Right)** to browse the MAIN MENU and select **SYSTEM** Menu, press **▶|| PLAY/PAUSE/STOP** button.
3. Use **Jog Switch (Left/Right)** to browse the **SYSTEM** submenus. Select the **FIRMWARE VERSION** the display will show the version number of firmware used on this player.
4. Press **MENU** button briefly to exit and return to the **SYSTEM** menu.

# Troubleshooting Guide

## TROUBLESHOOTING GUIDE

Many potential problems can be resolved without calling a service technician. If something seems to be wrong with this product, check the following before calling us.

### **The player cannot be switched on**

- Check if the battery is inserted properly.
- Check if the battery is exhausted.
- Check if the HOLD key is switched OFF.

### **No sound or the sound quality is poor**

- Check if the volume is set too low.
- Check if the earphone is plugged in properly.

### **Sound skips during playback**

- Check if the battery is exhausted.
- Check if the music file is bad encoded.

### **Voice recording is not possible**

- Check if the HOLD key is switched OFF.
- Make sure if there's enough storage memory for recording.

### **Display shows "NO LICENSE" and will not play track**

- Check if the license file for the selected track is expired. You may contact the content provider for instructions for updating license files.



## Product Specifications

As a part of our policy of continuous improvement. Goodmans reserves the right to make design and specification changes for product improvement without prior notice. The performance specification figures indicated are nominal values. There may be some deviations from these values in individual units.

### General Specifications

Model & Internal Memory	GMP31M2 (128MB)
	GMP32M2 (256MB)
	GMP35M2 (512MB)
Battery Type	1 AAA Alkaline Battery
LCD	128x32 dot matrix display, with Backlight
Playback File Formats	MP3, WMA
MP3 Decoding	8 Kbps ~ 320 Kbps
WMA Decoding	32 Kbps ~ 384 Kbps
S/N Ratio	85 dB
Headphone Output	5mW x 2 @ 32Ω
Sample Frequency of the Recording	8 KHz

\* Specifications are subject to change without notice.

---

For further assistance please visit the Goodmans website:

**[www.goodmans.co.uk](http://www.goodmans.co.uk)**

or contact the Goodmans  
Product Information Helpline:

**0870 873 0080**

---