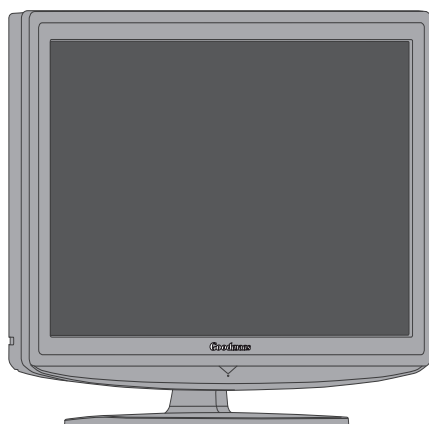


Goodmans

GML19W44HDF / GML22W44HDF Digital TV

GML26W44HDF / GML32W44HDF Digital TV

Instruction Manual



IMPORTANT: Please read all instructions carefully before use and keep for future reference

Contents

PACKAGE CONTENTS	1
IMPORTANT SAFETY INSTRUCTIONS	2
MAINS PLUG WIRING	3
WARNINGS	4
SETTING UP YOUR TV	5
Front Panel Controls.....	5
Back Panel Information.....	6
Stand Installation	7
Detaching Stand	8
Wall Mounting	9
Supported Display Resolution	10
WATCHING TV / PROGRAMME CONTROL.....	11
Remote Control Key Functions	11
INSTALLING THE TV	13
Connecting an external Device with Composite Connector.....	15
Connecting an external Device with S-Video Connector	16
Connecting an external Device with Component(YPbPr) Connector	17
Connecting an external Device with SCART Connector.....	18
Connecting AV Equipment with HDMI Connector	19
Connecting AV Equipment with DVI Connector	20
Connecting a PC.....	21
Connecting an external Dolby Digital 5.1 Sound System	22
USING THE DIGITAL TV FEATURES	23
Customizing the PICTURE Settings	23
Customizing the AUDIO Settings.....	25
Customizing the TIME Settings.....	27
Customizing the OPTION Settings	28
Customizing the SETUP Settings	29
Customizing the LOCK Settings	30

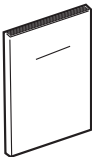

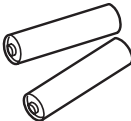




PROGRAMME GUIDE..... 32
 Using the Electronic Programme Guide32

TELETEXT (ATV)..... 33
 Switch On/Off.....33
 Simple Text33
 Top Text.....33
 Special Teletext Functions34

APPENDIX 35
 Troubleshooting35
 Product Specifications37

PACKAGE CONTENTS

PLEASE CHECK CAREFULLY IN THE PACKAGING MATERIAL FOR THE LISTED PARTS..

<p>User's Manual</p> 	<p>Remote Control</p> 	<p>AAA size battery X2</p> 	<p>Quick Guide</p> 
<p>Screws 4x20</p>  <p>x 4</p> <p>(Only 26" & 32" models)</p>	<p>Stand</p> 	<p>Power Cord</p>  <p>UK only</p> <p>* The type of power plug provided is different depending on the model</p>	



NOTE

- Make sure all of the above contents are included in the package. If any items are missing please contact your dealer

IMPORTANT SAFETY INSTRUCTIONS

WARNING

To reduce the risk of fire or electric shock, do not expose this equipment to rain or moisture.



CAUTION
RISK OF ELECTRIC SHOCK
DO NOT OPEN



CAUTION: TO AVOID THE RISK OF ELECTRIC SHOCK,
DO NOT REMOVE COVER (OR BACK).
NO USER-SERVICEABLE PARTS INSIDE.
REFER SERVICING TO QUALIFIED SERVICE PERSONNEL.



This symbol is intended to alert the user to avoid the risk of electric shock, do not disassemble this equipment by anyone except a qualified service personnel.



This symbol is intended to alert the user to the presence of important operating and maintenance instructions in the literature accompanying the appliance.



CAUTION

Invisible laser radiation when open and interlocks defeated.
avoid exposure to beam.

Use of controls or adjustments or performance of procedures other than those specified herein may result in hazardous radiation exposure.

MAINS PLUG WIRING

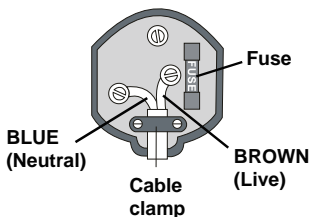
Electrical Information

The AC adaptor is fitted with a BS1363/A 13 amp plug. If it is not suitable for your supply sockets it must be removed and replaced with an appropriate plug. If the plug becomes damaged and/or needs to be replaced please follow the wiring instructions below. The plug removed must be disposed of immediately. It must not be plugged into a supply socket as this will be an electrical hazard. If the fuse needs to be replaced it must be of the same rating and ASTA approved to BS1362. If the plug is changed, a fuse of the appropriate rating must be fitted in the plug, adaptor or at the distribution board. If the fuse in a moulded plug is replaced, the fuse cover must be refitted before the appliance can be used.

Wiring Instructions

The supply cable will be either 2-core or 3-core. Follow the appropriate wiring instructions given below. In both cases ensure that the outer sheath of the cable is firmly held by the cable clamp.

2- CORE



WARNING! Do not connect either wire to the earth terminal.

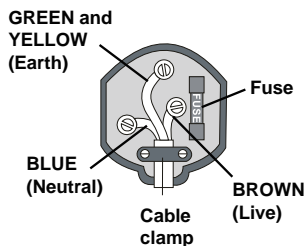


This symbol indicates that this 2-core appliance is Class II and does not require an earth connection.

The wire coloured blue must be connected to the terminal marked with the letter N or coloured black.

The wire coloured brown must be connected to the terminal marked with the letter L or coloured red.

3- CORE



WARNING! This appliance must be earthed.

The wire coloured green and yellow must be connected to the terminal marked with the letter E, or by the earth symbol, \perp , or coloured green or green and yellow.

The wire coloured blue must be connected to the terminal marked with the letter N or coloured black.

The wire coloured brown must be connected to the terminal marked with the letter L or coloured red.

WARNINGS

- Unqualified attempts to repair this TV are not allowed. Refer repairs to this unit to a qualified technician only.
- Do not disassemble this unit. There are dangerous-voltage parts inside that may cause electric shock even after power is disconnected.
- Store your unit in a clean, dry environment. Unplug the unit immediately it gets wet, and consult your servicing technician.
- Always unplug the unit before cleaning it. Wipe dust off the cabinet of the unit with clean & dry & soft cloth. Apply non-ammonia cleansing lotion onto the cloth, not directly onto the screen.
- Do not place heavy objects on top of the unit.
- Avoid exposing your unit directly to sunlight or other heat sources.
- Put your unit in a well-ventilated area away from high humidity.
- Do not expose this TV to rain or moisture, dripping or splashing.
- The Class I apparatus shall be connected to a mains socket outlet with a protective earthing connection..
- The mains plug or appliance coupler is used as the disconnect device, the disconnect device shall remain readily operable
- Excessive sound pressure from earphones and headphones can cause hearing loss. Adjustment of the equalizer to maximum increases the earphones and headphones output voltage and therefore the sound pressure level.

Safety Tips

- If smoke, abnormal noise or odour comes out of your unit, unplug from the mains supply immediately and call your dealer.
- Never try to repair the unit on your own. Always call your dealer for repairs.

Note

This user's manual contains for-reference-only graphics and information that are subject to change without notice.

WEEE:

This appliance is labeled in accordance with European Directive 2002/96/EG concerning used electrical and electronic appliances(waste electrical and electronic equipment - WEEE). The guideline determines the framework for the return and recycling of used appliances as applicable throughout the EU.

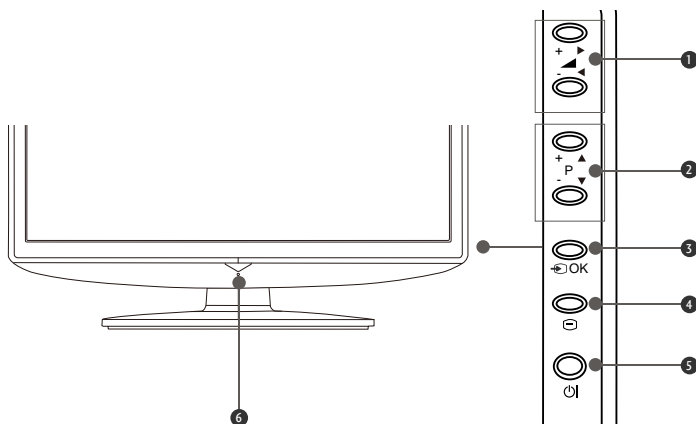
IMPORTANT INFORMATION ABOUT OVER-AIR DOWNLOADS

When ever the TV is left in standby mode (this means you switch the TV off using the remote) the TV will automatically search for any available Over-Air downloads (OAD's) at 3AM each day. If any updates are found the TV will automatically be updated.

SETTING UP YOUR TV

Front Panel Controls

- Image shown may differ from your TV.
- If your TV has a protection film attached, remove the film and then wipe the TV with a soft cloth.



① Volume

Use these two buttons to adjust volume up/down.

In OSD menu, use these two buttons to switch the selection left and right.

② Programme

Use these two buttons to select channels

In OSD menu, use these two buttons to switch the selection up and down.

③ Input

Press this button to select the required source.

④ Menu

Press this button to access the main menu.

⑤ POWER

Press this button to switch the TV on/off.

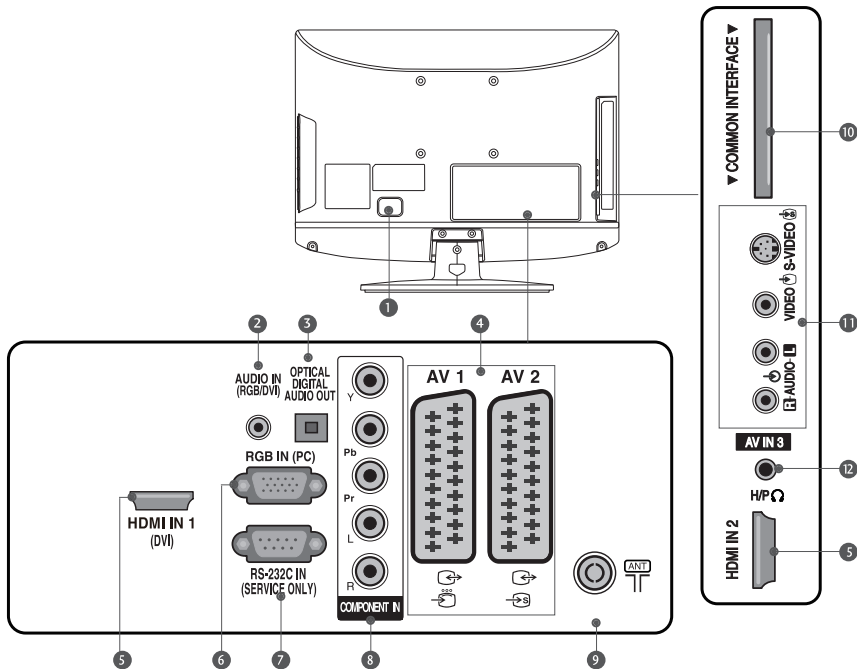
⑥ POWER LED/IR Remote Receiver

The blue light indicates the TV power is on.

The red light indicates the TV is in standby mode.

Receive the signal from the remote control.

Back Panel Information



❶ Power Cord Socket

This TV operates on an AC power. The voltage is indicated on the Specifications page. Never attempt to operate the TV on DC power.

❷ RGB/DVI Audio Input

Connect the audio from a PC or DVI.

❸ DIGITAL AUDIO OUT (OPTICAL)

Connect digital audio from various types of equipment. Note: In standby mode, these ports do not work.

❹ Euro Scart Socket (AV1/AV2)

Connect scart socket input or output from an external device to these jacks.

❺ HDMI Input

Connect a HDMI signal to HDMI IN or DVI (VIDEO) signal to HDMI/DVI port with DVI to HDMI cable.

❻ RGB Input

Connect the output from a PC.

❼ RS-232C IN (SERVICE ONLY) PORT

❽ Component Input

Connect a component video/audio device to these jacks.

❾ Aerial Input

Connect RF aerial to this jack.

❿ Common Interface (CI) Card Slot

This is normally used to receive Pay services.

⓫ Audio/Video Input

Connect audio/video output from an external device to these jacks.

S-Video Input

Connect S-Video out from an S-Video device.

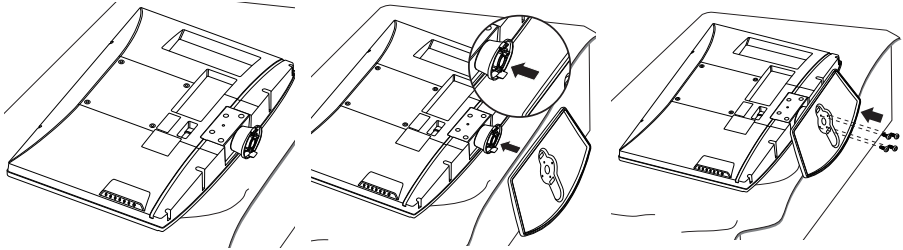
⓬ Headphone Socket

Connect the headphone plug to this socket.

Stand Installation

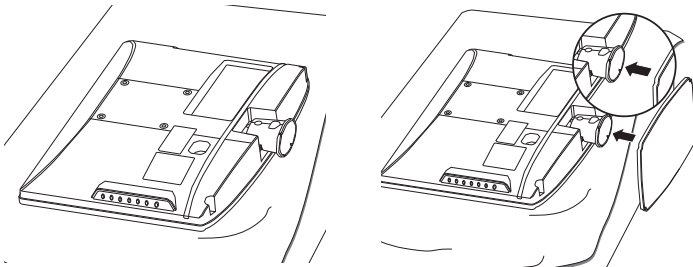
When assembling the desk type stand, check whether the bolt is fully tightened. (If not tightened fully, the product can tilt forward after the product installation.) If you tighten the bolt with excessive force, the bolt can deviate from abrasion of the tightening part of the bolt.

(Only 26" & 32" models)



- 1 Carefully place the TV screen side down on a cushioned surface to protect the screen from scratches and damages.
- 2 Assemble the Base with the Stand as shown.
- 3 Fix the bolts securely at the bottom of the Base. (3 bolts for 26" TV and 4 bolts for 32" TV).

(Only 19" & 22" models)

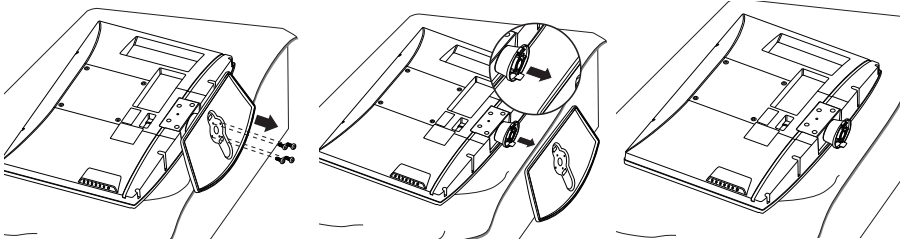


- 1 Carefully place the TV screen side down on a cushioned surface to protect the screen from scratches and damages.
- 2 Assemble the Base with the Stand as shown.

Detaching Stand

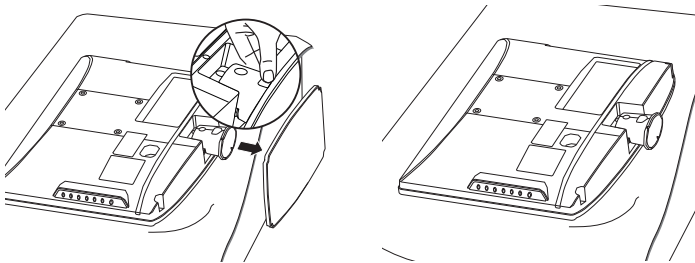
Image shown may differ from your TV.

(Only 26" & 32" models)



- 1** Carefully place the TV screen side down on a cushioned surface to protect the screen from scratches and damages.
- 2** Loosen the bolts from the bottom of the Base. (3 bolts for 26" TV and 4 bolts for 32" TV).
- 3** Separate the Base from the Stand as shown.

(Only 19" & 22" models)

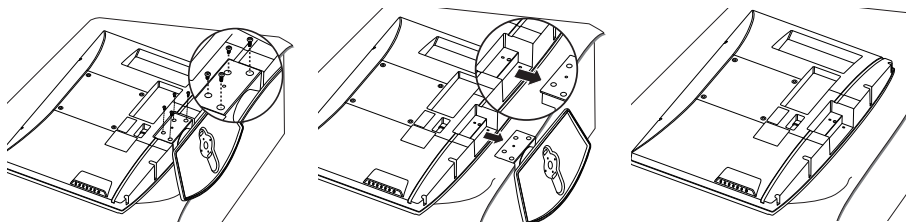


- 1** Carefully place the TV screen side down on a cushioned surface to protect the screen from scratches and damages.
- 2** Pull out the Base while pressing the button on the Stand as shown.

Wall Mounting

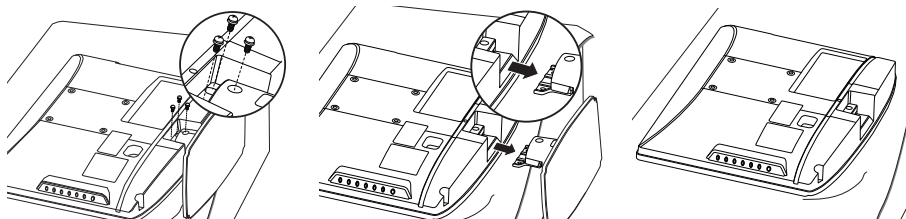
Before assembling the wall mounting, make sure the bolts are fully tightened on the wall mount bracket. If not, the TV may tilt after the installation

(Only 26" & 32" models)



- 1** Remove the bolts from the back of the Stand. (3 bolts for 26" TV and 4 bolts for 32" TV).
- 2** Remove the Stand Base as shown.
- 3** Secure the wall mount bracket to the back of the TV. (Refer to the instructions for the wall mount bracket.)

(Only 19" & 22" models)



- 1** Remove the 3 bolts from the back of the Base.
- 2** Remove the Stand Base as shown.
- 3** Secure the wall mount bracket to the back of the TV. (Refer to the instructions for the wall mount bracket.)

! NOTE

- ▶ For 19"/22"/26": Secure the wall mount bracket to the back of the TV using four M4 screws(M4 x 10mm) (Not supplied).
- ▶ For 32": Secure the wall mount bracket to the back of the TV using four M6 screws(M6 x 10mm) (Not supplied).

Supported Display Resolution

RGB[PC], HDMI[PC] mode

Resolution	Horizontal Frequency(kHz)	Vertical Frequency(Hz)
720x400	31.468	70.08
640x480	31.469	59.94
	37.684	75.00
800x600	37.879	60.31
	46.875	75.00
832x624	49.725	74.55
1024x768	48.363	60.00
	56.470	70.00
1024x768	60.123	75.029
	45.00	60.00
1280x720	45.00	60.00
1280x800	62.795	75.00
1152x864	67.50	75.00
1366x768	47.56	59.60
1440x900	55.935	57.887
1680x1050	65.16	59.94

HDMI[DTV] mode (Only real side HDMI support)

Resolution	Horizontal	Vertical Frequency(Hz)
720x480p	31.469 / 31.5	59.94 / 60
720x480i	15.734 / 15.6	60
720x576p	31.25	50
720x576i	15.625	50
1280x720p	37.500	50
	44.96 / 45	59.94 / 60
1920x1080i/p	33.72 / 33.75	59.94 / 60
	28.125	50.00
	26.97 / 27	23.97 / 24
	33.716 / 33.75	26.976 / 30.00
	56.250	50
	67.43 / 67.5	59.94 / 60

! NOTE

- ▶ 19** is supported to 1440x900 in RGB/HDMI[PC] mode.
- ▶ 19/22** is supported to 1024x768@70/75Hz, 1280x800, 1152x864 in RGB/HDMI[PC] mode.
- ▶ 22** is supported to 1680x1050 in RGB/HDMI[PC] mode.
- ▶ 26/32** is supported to 1366x768 in RGB/HDMI[PC] mode.

WATCHING TV / PROGRAMME CONTROL

Remote Control Key Functions

When using the remote control, aim it at the remote control sensor on the TV



POWER Switches the TV on from standby or off to standby.

INPUT External input mode rotate in regular sequence or Display the Input List.

INFO Show the channel information.

RATIO Select your desired picture format.

SLEEP Set the Sleep Timer

0-9 number Selects a programme.

GUIDE Show the programme guide with information.

Q.VIEW Return to the previous programme

PICTURE MODE Select and set the Picture Mode.

SOUND MODE Select and set the Sound Mode.

AD Switch the Audio Description on/off.

CH LIST Display the programme List.

FAV Display the selected favorite programme.

ADD/ERASE Add/Erase programme to your Favorite List.

I/I Select the Mono/Stereo sound.

MUTE Switch the sound On/Off.

RETURN Allows the user to move back one step in an interactive application, or other user interaction function.

MENU Display the menu screen.

EXIT Clears all on-screen displays and returns to TV viewing from any menu.


THUMBSTICK (Up/Down/Left Right) Allows you to navigate the on-screen menus and adjust the system settings to your preference.


OK Accepts your selection or displays the current mode.



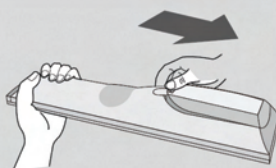
1 TELETEXT BUTTONS These buttons are used for teletext. For further details, see the 'Teletext' section.

Coloured buttons These buttons are used for teletext (on **TELETEXT** models only).

TEXT  Show the **TELETEXT** screen..

SUBTITLE  Recalls your preferred Teletext subtitle page or display the channel subtitle.

Installing Batteries



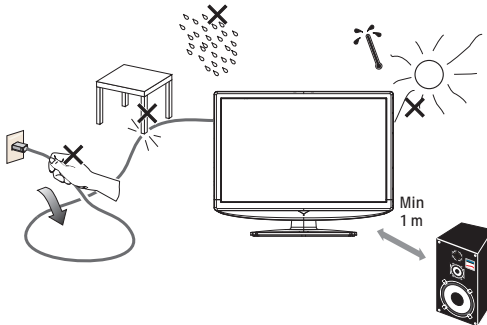
- Open the battery compartment cover on the back and install the batteries matching correct polarity (+with +, -with -).
- Install two 1.5V AAA batteries. Do not mix old or used batteries with new ones.
- Close cover.

INSTALLING THE TV

Before installation

Please make sure to connect the power plug to the wall outlet socket after connecting the TV to the power cord!

1. Install the base stand; place the TV on a solid surface.



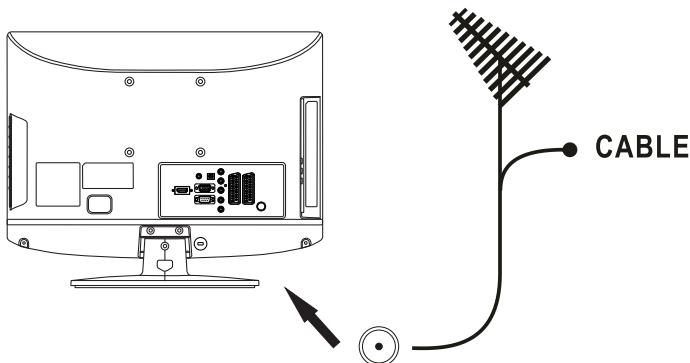
Ensure that the TV is placed in a position to allow free flow of air. Do not cover the ventilation openings on the back cover.

To prevent any unsafe situations, no naked flame sources, such as lighted candles, should be placed on or in the vicinity.

Avoid heat, direct sunlight and exposure to rain or water. The equipment shall not be exposed to dripping or splashing.

Connecting a TV Cable

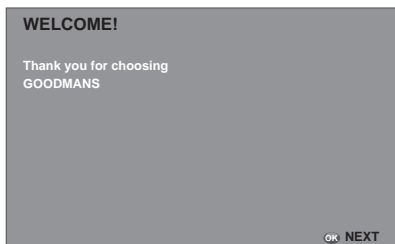
2. Connect the antenna cable or CATV cable to the aerial socket **ANT IN 75Ω** at the back of the TV set.



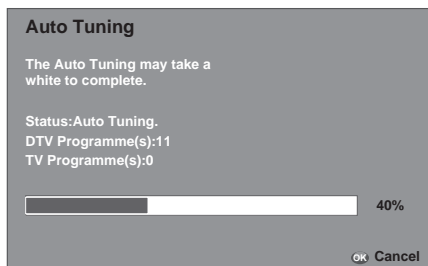
Refer to the owner's manual of any external equipment to be connected.

When connecting any external equipment, do not connect any AC power cords to wall outlets until all other connections are completed.

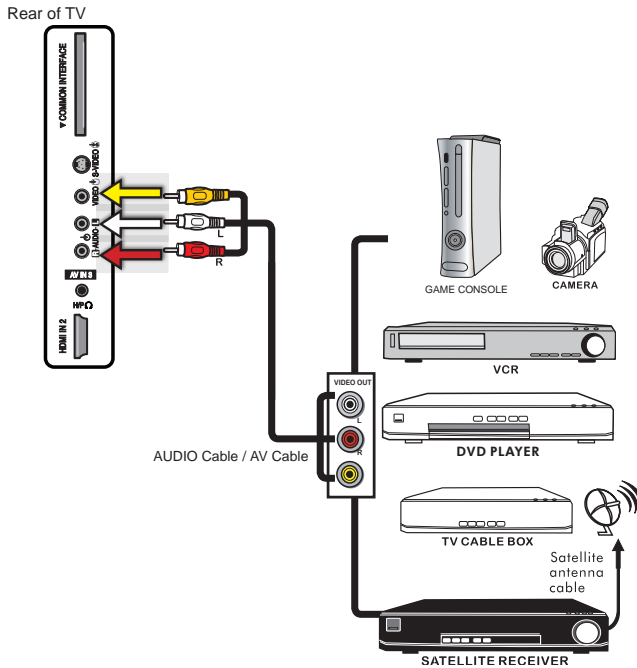
3. When you switch on the TV for first time, the Initial Setup menu appears on the screen.






4. Press the OK button for Language , and use the ▲ ▼ buttons to select the language displayed on the menu.
5. Press the OK button for Country, and use the ▲ ▼ buttons select the country in which you will operate the TV.
6. Press the OK button for Auto Tuning and press the OK button to start.
7. Press the OK button to Complete the Auto Tuning.

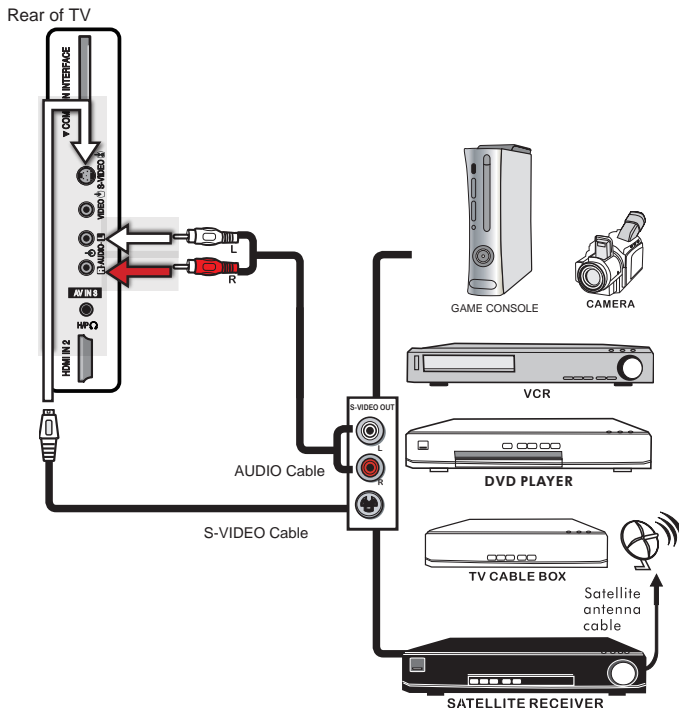


Connecting an external Device with Composite Connector



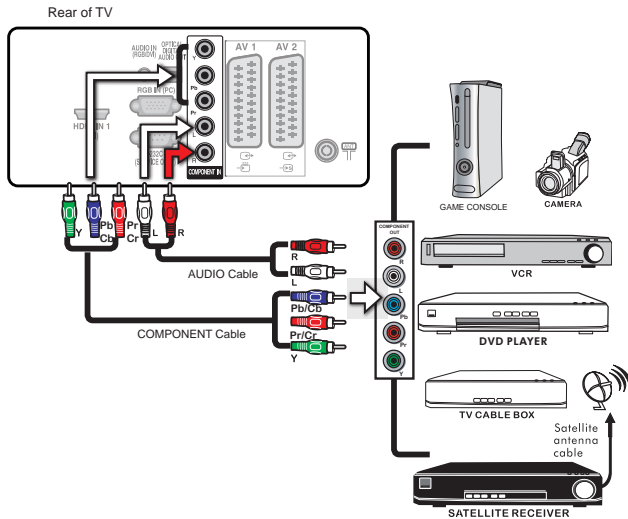
-
- 1 Use a composite cable to connect the external A/V device's composite video/audio socket to the TV's VIDEO IN socket.
 - 2 Connect all AC power sources, before turning on the power switch of the TV or other connected equipment.
 - 3 Press the power  button on the remote to turn on the TV
 - 4 To view the A/V device's with component input, press the INPUT button on the remote, then using  or  button on the remote to select AV3(CVBS), then press OK button
-




Connecting an external Device with S-Video Connector



- 1 Use an audio cable to connect the external A/V device's audio output socket to the TV's audio inputs. Use a S-Video cable to connect the external A/V device's S-Video output jack to the TV's S-Video IN input jack.
- 2 Connect all AC power sources, before turning on the power switch of the TV or other connected equipment.
- 3 Press the power button on the remote to turn on the TV.
- 4 To view the A/V device's with component input, press the INPUT button on the remote, then using ▲ or ▼ button on the remote to select AV3(S-VIDEO) , then press OK button.

Connecting an external Device with Component(YPbPr) Connector

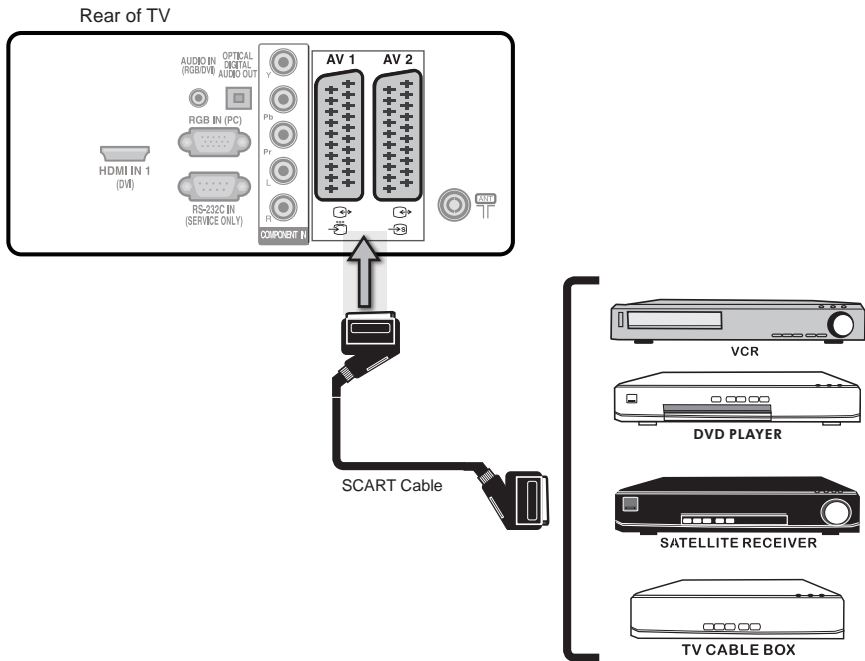





- 1 Use a component cable to connect the external A/V device's component output socket to the TV's YPbPr IN input socket. Use an audio cable to connect the external A/V device's component audio socket to the TV's audio input socket.
- 2 Connect all AC power sources, before turning on the power switch of the TV or other connected equipment.
- 3 Press the power  button on the remote to turn on the TV.
- 4 To view the A/V device's with component input, press the INPUT button on the remote, then using  or  button on the remote to select Component , then press OK button.

CAUTION

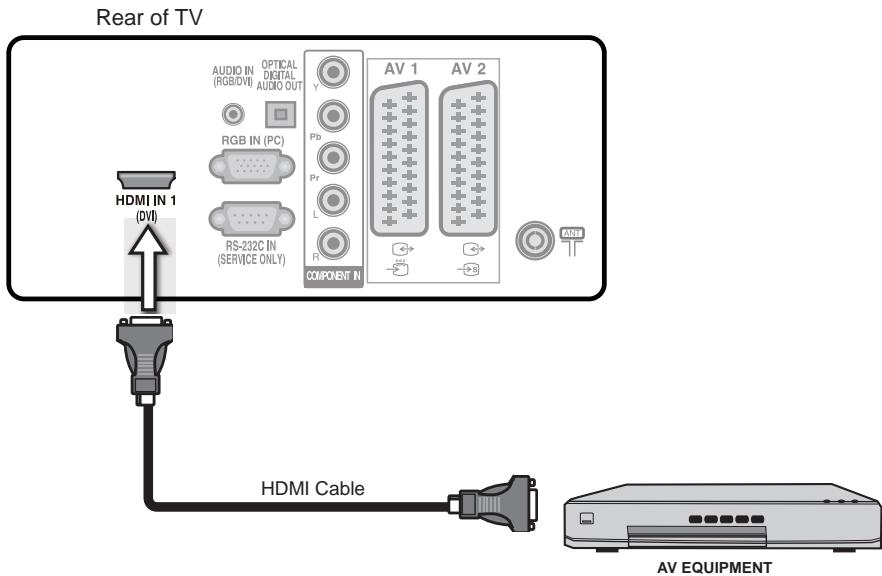
- ▶ Not all A/V device have the ability to connect to a TV. Please check your A/V device user guide for compatibility.
- ▶ The component video socket on your A/V device are sometimes labeled YPbPr, or YCbCr. For an explanation of component video, see your A/V device's user guide.




Connecting an external Device with SCART Connector



- 1 Use a SCART cable to connect the external A/V device's SCART socket to the TV's SCART IN jack.
- 2 Connect all AC power sources, before turning on the power switch of the TV or other connected equipment.
- 3 Press the power  button on the remote to turn on the TV.
- 4 Press the INPUT button on the remote, then using  or  button on the remote to select AV1 or AV2 , then press OK button.

Connecting AV Equipment with HDMI Connector

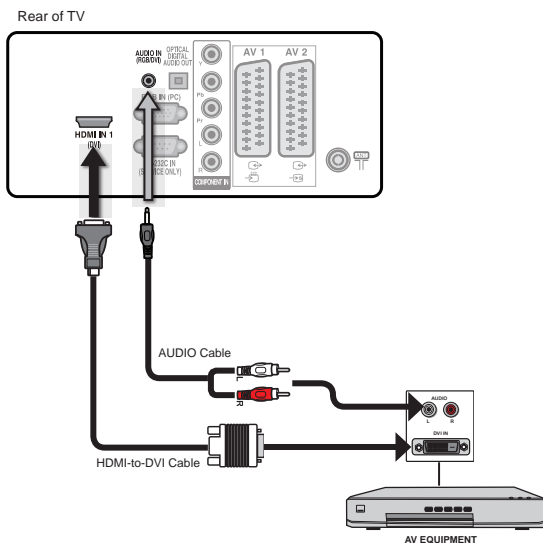





- 1** Use an HDMI cable to connect the AV equipment's HDMI output socket to the TV's HDMI IN socket.
- 2** Connect all AC power sources, before turning on the power switch of the TV or other connected equipment.
- 3** Press the power  button on the remote to turn on the TV.
- 4** Press the INPUT button on the remote, then using  or  button on the remote to select HDMI 1, then press OK button.

CAUTION

- ▶ The HDMI connector provides both video and audio signals.

Connecting AV Equipment with DVI Connector

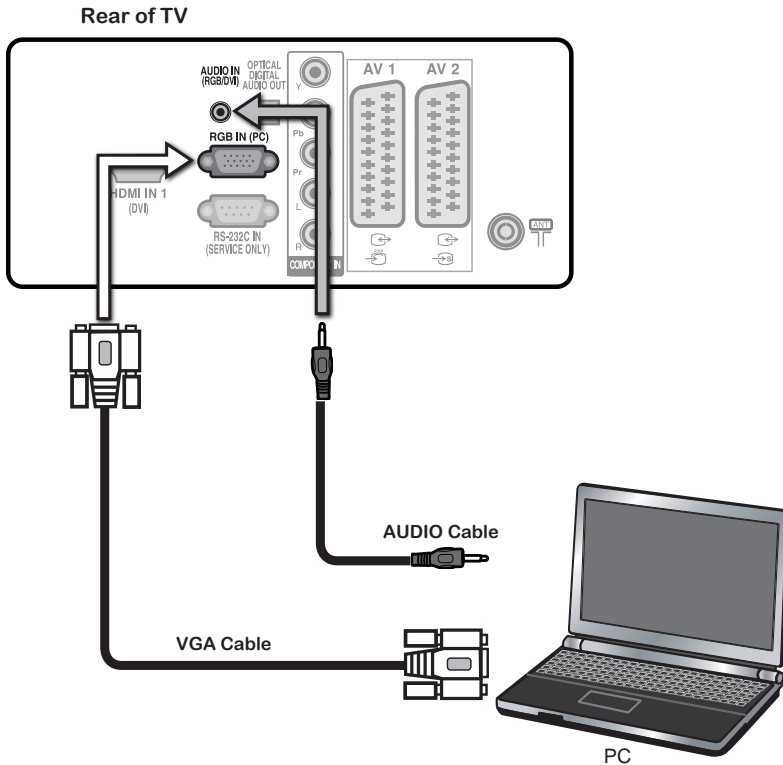





- 1** Use an HDMI-to-DVI cable to connect the AV equipment's DVI output socket to the TV's HDMI IN socket.
Use an audio cable to connect the AV equipment's audio output socket to TV's HDMI AUDIO socket.
- 2** Connect all AC power sources before turning on the power switch of the TV or other connected equipment.
- 3** Press the power  button on the remote to turn on the TV.
- 4** Press the INPUT button on the remote, then using  or  button on the remote to select HDMI 1 , then press OK button.

CAUTION

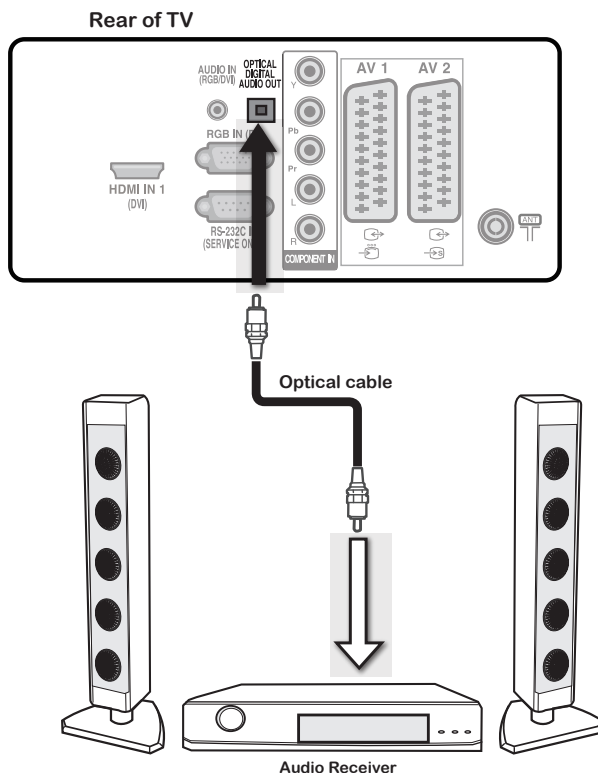
- If the TV is connected to AV equipment's DVI connector, you will need an HDMI-to-DVI cable or an HDMI adapter(not supplied) and an audio cable. (Twin RCA to stereo 3.5mm plug not supplied)


Connecting a PC



- 1 Use a D-SUB cable to connect the PC's D-SUB output jack to the TV's VGA input jack.
Use an audio cable to connect the PC's audio output socket to TV's.
- 2 Connect all AC power sources, before turning on the power switch of the TV or other connected equipment.
- 3 Press the power  button on the remote to turn on the TV.
- 4 Press the INPUT button on the remote, then using  or  button on the remote to select RGB-PC, then press OK button.

Connecting an external Dolby Digital 5.1 Sound System



- 1 Connect Optical Digital Audio out socket to the digital audio (optical) input socket on the audio equipment.
- 2 Connect all AC power sources, before turning on the power switch of the TV or other connected equipment.
- 3 Press the power  button on the remote to turn on the TV. Refer to your Digital Audio system instruction manual.









CAUTION

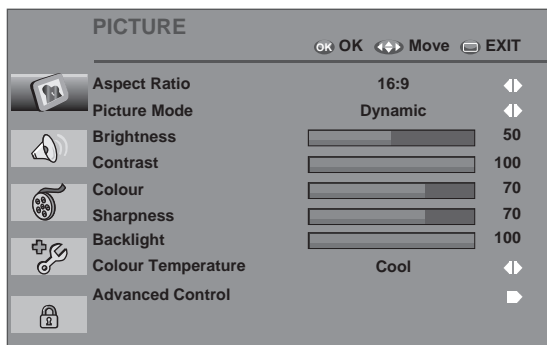
- Digital Audio output is only from DTV.

USING THE DIGITAL TV FEATURES

Customizing the PICTURE Settings

Allows you to make adjustments to your picture settings.

- 1 Press the  button to turn the TV on.
- 2 Press the MENU button on the remote control to display the Main menu, and use the   buttons to select the PICTURE MENU. Press  or OK button to select picture settings.
- 3 Use the   buttons to highlight an individual picture option, use the   buttons to change the setting, and press the EXIT to exit the menu.



CAUTION

- The available menu items are dependent on the input source being selected. All illustration is for reference only.

- 4 The PICTURE menu includes the following options:

Aspect Ratio

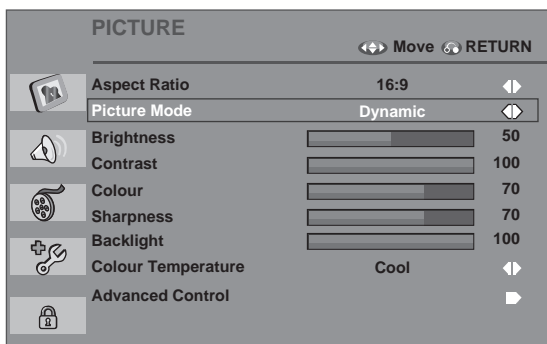
Picture formats as followed:

- 16:9, Original, 4:3, 14:9, ZOOM 1, Zoom 2
- In Component and HDMI mode: 16:9(Wide), 4:3, 14:9
- In RGB / HDMI [PC] mode: 4:3, 16:9(Wide)
- In UK digital teletext (MHEG-5): Original

Picture Mode

Cycles among display types: Dynamic / Nature / Cinema / Sport / Game / User.

User: Allows to store your preferred settings. If you select the User mode, you can individually set the items shown:



Brightness

Controls the overall brightness of the picture.

Contrast

Controls the difference between the brightest and darkest regions of the picture.

Colour

Sharpness

Increase this setting to see crisp edges in the picture; decrease it for soft edges.

Backlight








Colour Temperature

Adjusts colour components independently to achieve a warm or cool effect: Normal / Warm / Cool.

Advanced Control

Customizing the AUDIO Settings

Allows you to customize the audio options and effects.

- 1 Press the  button to turn the TV on.
- 2 Press the MENU button on the remote control to display the Main menu, and use the   buttons to select the AUDIO.
- 3 Use the   buttons to highlight an individual sound option, use the   buttons to change the setting, and press the MENU to exit the menu.



- 4 The AUDIO Setup menu includes the following options.

Sound Mode

Allows selection of an audio-enhancement technique from among the following options: Clear Voice / Standard / Music / Cinema / Sport / Game / User.

User: Allows storing your preferred settings. If you select the User mode, you can individually set the items shown.

Balance

Adjust the sound balance of the speakers to preferred levels.

Virtual Surround

Switch the Virtual Surround on or off.

Auto Volume

Automatically remains on the same level of volume if you change programme.

Digital Audio Out

Allows you to select your preferred Digital Audio Output: Dolby Digital / PCM.

Type

Allows you select the audio type: Normal / Hard of Hearing / Audio Description.








Audio Description Volume Level

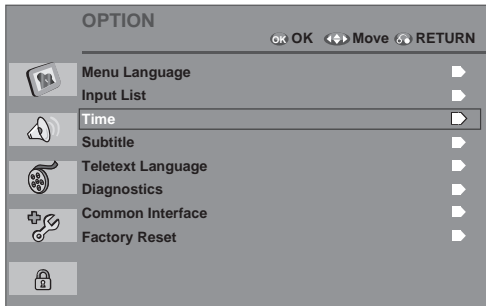
Adjusts volume level of the audio description when switched on.

Customizing the TIME Settings

Allows you to set up Automatic TV power On / Off times and Sleep Timer.

Please note that the time settings are 24 hour format. You will be able to wake to DTV / DTV RADIO or Analogue TV.

- 1 Press the  button to turn the TV on.
- 2 Press the MENU button on the remote control to display the Main menu, and use the   buttons to select the OPTION. Use the   button to select the Time.
- 3 Use the   buttons to highlight an individual time option to change the setting, and press the MENU to exit the menu.



- 4 The TIME menu includes the following options:



Time Zone

When you select a Time Zone City, the TV time is set by the time offset information based on Time Zone and GMT(Greenwich Mean Time) which is received with the broadcast signal and the time is set automatically by a digital signal.

Clock






The clock is set automatically when receiving a digital signal. (You can set the clock manually only if the TV has no DTV signal.) You must set the time correctly before using on/off timer function.

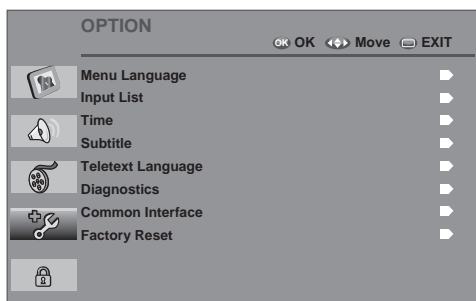
Sleep Timer

Use   buttons to select a period of time after which the TV automatically switches to standby mode: Off, 10, 20, 30, 40, 50, 60, 90, 120(minutes),

Customizing the OPTION Settings

Allows you to set up a variety of features: Menu Language, Input List, Time, Subtitle, Teletext Language, Diagnostics, Common Interface, Factory Reset

- ❶ Press the  button to turn the TV on.
- ❷ Press the MENU button on the remote control to display the Main menu, and use the   buttons to select the OPTION.
- ❸ Use the   buttons to highlight an individual option option, press OK to enter the setting screen, and press the MENU to exit the menu.



- ❹ The OPTION menu includes the following options:

Menu Language

Selects to display all on-screen menus in your language of choice.

Input List

Selects the input source

Time

Subtitle

Allows to display subtitle on the screen when viewing digital TV.

Teletext Language

Selects the language of your choice on the teletext menu.

Diagnostics

Allows you to view information about model name, software version and serial number.






Common Interface

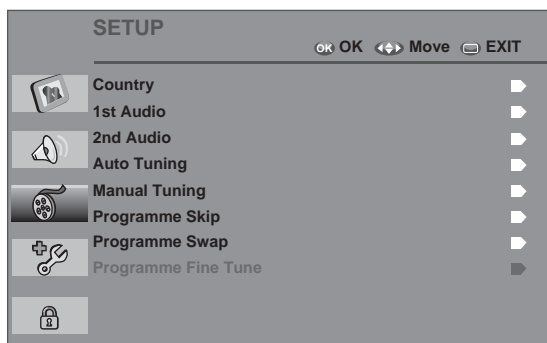
Allows to display the CI information.

Factory Reset

Allows to reset all the system settings to factory default values.

Customizing the SETUP Settings

- 1 Press the  button to turn the TV on.
- 2 Press the MENU button on the remote control to display the Main menu, and use the   buttons to select the SETUP.
- 3 Use the   buttons to highlight an individual channel Setup option, press OK to enter the setting screen, and press the MENU to exit the menu.



- 4 The SETUP menu includes the following options:

Country

Allows you select the country.

Audio Language

Allows select the preferred audio language.

Auto Tuning

Automatically find and store all available programmes in both analog and digital mode.

Manual Tuning

Allows you add a programme to your programme list manually.

Programme Skip

When a programme number is skipped, you will be unable to select it using (P + / -) button during TV viewing.

Programme Swap






Allows you change the order of the programme list.

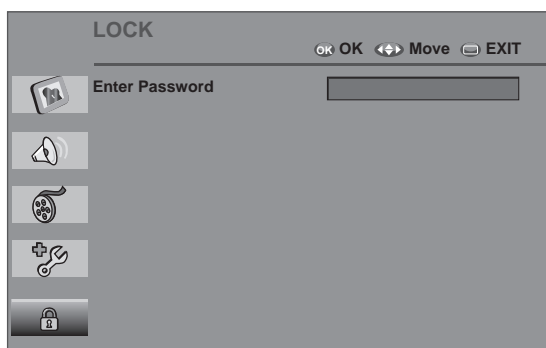
Programme Fine Tune

Normally fine tuning is only necessary if reception is poor.

Customizing the LOCK Settings

The Parental Control can be set to the TV to block Channel, Video Source and to change password.

- 1 Press the  button to turn the TV on.
- 2 Press the MENU button on the remote control to display the Main menu, and use the   buttons to select the LOCK.
- 3 Press OK then enter the 4-digit password. (The factory password is 0000.).
- 4 Use the   buttons to highlight an individual lock setup option.



- 5 The LOCK menu includes the following options:

Block Programme

Blocks any programmes that you do not want to watch or you do not want your children to watch.

Parental Guidance

Prevent children from watching certain adult's TV programmes, according to the rating limit set: 4 to 18 years old or Off.




This function operates according to information from the broadcasting station. Therefore, if the signal has no this information, this function does not operate.

Set Password

Allows to set the password. Use the function, must enter a four-digit password. The factory password is 0000:

Key Lock

Allows to lock the side panel keys:

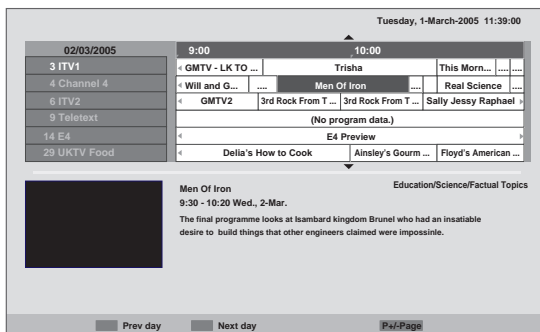
- In Key Lock “On” if TV is turned off, press the  / I, INPUT, P(+ -),  (+ -) buttons on the TV or POWER, INPUT, P(+ -),  (+ -) buttons on the remote control to turn on the TV.
- With the Key Lock On, the display “Key Lock On” appears on the screen if any button on the front panel is pressed while viewing the TV.

PROGRAMME GUIDE

Using the Electronic Programme Guide

The Programme Guide is an Electronic Programme guide that provides viewers with a quick and easy way to view a complete list of digital of programmes. The Programme Guide feature brings all sorts of information to your screen, such as program title, program duration, time remaining, rating information, availability, etc.

- 1 Press the GUIDE button on the remote control, the Programme Guide will appear on the screen.



- 2 Press ▲▼◀▶ buttons to select the programme from a list, the Programme Guide provides introduction about the current programme being shown on each channel.
(The Programme information in the guide is provided by the broadcasters)
- 3 Press GUIDE or EXIT button on the remote control to exit the Programme Guide.

The Programme Guide features are displayed at the bottom of the screen. Use the colour keys (red, green,yellow, blue) on remote control to activate.

TELETEXT (ATV)

This feature is not available in all countries.

Teletext is a free service broadcast by most TV stations which gives up-to-the-minute information on news, weather, television programmes, share prices and many other topics.

The teletext decoder of this TV can support the SIMPLE, TOP system. SIMPLE (standard teletext) consists of a number of pages which are selected by directly entering the corresponding page number. TOP is more modern method allowing quick and easy selection of teletext information.

Switch On/Off

Press the **TEXT** button to switch to teletext. The initial page or last page viewed appears on the screen.

Two page numbers, TV station name, date and time are displayed on the screen headline. The first page number indicates your selection, while the second shows the current page displayed.

Press the **TEXT** or **EXIT** button to switch off teletext. The previous mode reappears.

Simple Text

■ Page selection

- 1 Enter the desired page number as a three digit number with the **NUMBER** buttons. If during selection you press a wrong number, you must complete the three digit number and then re-enter the correct page number.
- 2 The **P + -** button can be used to select the preceding or following page.

Top Text

The user guide displays four fields-red, green, yellow and blue at the bottom of the screen. The yellow field denotes the next group and the blue field indicates the next block.

■ Block / group / page selection

- 1 With the blue button you can progress from block to block.
- 2 Use the yellow button to proceed to the next group with automatic overflow to the next block.
- 3 With the green button you can proceed to the next existing page with automatic overflow to the next group. Alternatively the **P +** button can be used.
- 4 The red button returns to the previous selection. Alternatively the **P -** button can be used.

■ Direct page selection

As with SIMPLE teletext mode, you can select a page by entering it as a three digit number using the **NUMBER** buttons in TOP mode.

Special Teletext Functions



■ REVEAL

Select this menu to display concealed information, such as solutions to riddles or puzzles.



■ HOLD

Stops the automatic page change which will occur if a teletext page consists of 2 or more sub pages. The number of sub pages and the sub page displayed is, usually, shown on the screen below the time. When this menu is selected the stop symbol is displayed at the top left-hand corner of the screen and the automatic page change is inactive.

APPENDIX

Troubleshooting

The TV does not operate properly.

The remote control does not work

- Check to see if there is any object between the TV and the remote control causing an obstruction. Ensure you are pointing the remote control directly at the TV.
- Ensure that the batteries are installed with correct polarity (+ to +, - to -).
- Ensure that the correct remote operating mode is set: TV, STB etc.
- Install new batteries.

Power is suddenly turned off

- Is the sleep timer set?
- Check the power control settings. Has the Power supply been interrupted?
- Is Auto sleep activated on this station?

The video function does not work.

No picture & No sound

- Check whether the TV is switched on.
- Try another channel. The problem may be with the broadcast.
- Is the power cord inserted correctly into the mains?
- Check your antenna direction and/or location.
- Test the mains outlet by plugging another TV into the same outlet.

Picture appears slowly after switching on

- This is normal, the image is muted during the TV startup process. Please contact your service centre, if the picture has not appeared after five minutes.

No or poor colour or poor picture

- Adjust Colour in menu option.
- Allow a sufficient distance between the TV and the VCR.
- Try another channel. The problem may be with the broadcast.
- Are the video cables installed properly?
- Activate any function to restore the brightness of the picture.

Horizontal/vertical bars or picture shaking

- Check for local interference such as an electrical appliance or power tool.

Poor reception on some channels

- Station or cable channel experiencing problems, tune to another station.
- Station signal is weak, reposition the antenna to receive weaker stations.
- Check for sources of possible interference.

Lines or streaks in pictures

- Check antenna (Change the position of the antenna).

The audio function does not work.

Picture OK & No sound

- Press the  button.
- Sound muted? Press **MUTE** button.
- Try another channel. The problem may be with the broadcast.
- Are the audio cables installed properly?

No output from one of the speakers

- Adjust **Balance** in menu option.

Unusual sound from inside the TV

- A change in ambient humidity or temperature may result in an unusual noise when the TV is switched on or off and does not indicate a fault with the TV.

There is a problem in PC mode. (Only PC mode applied)

The signal is out of range (Invalid format)

- Adjust resolution, horizontal frequency, or vertical frequency.
- Check the input source.

Vertical bar or stripe on background & Horizontal Noise & Incorrect position

- Use Auto configure or adjust size, phase, or H/V position. (Option)

Screen colour is unstable or single colour

- Check the signal cable.
- Reinstall the PC video card.

Product Specifications

MODELS		GML19W44HDF	GML22W44HDF
Dimensions (Width x Height x Depth)	with stand	446.1 x 358.5 x 160.6 mm 17.56 x 14.13 x 5.69 inches	511.6 x 400.0 x 160.6 mm 20.14 x 15.75 x 5.69 inches
	without stand	446.1 x 321.5 x 65.5 mm 17.56 x 12.66 x 2.54 inches	511.6 x 363.5 x 60.5 mm 20.14 x 14.31 x 2.38 inches
Weight	with stand	4.20 kg / 9.25 lbs	5.20 kg / 11.45 lbs
	without stand	4.00 kg / 8.80 lbs	5.0 kg / 11.00 lbs
Power requirement		AC100-240V~ 50/60Hz 0.8A	AC100-240V~ 50/60Hz 1.0A
Power Consumption		55W	60W
Television System		PAL/SECAM B/G/D/K, PAL I/II, SECAM L/L'	
Programme Coverage		VHF: E2 ~ E12, UHF: E21 ~ E69, CATV: S1 ~ S20, HYPER: S21 ~ S47	
External Antenna Impedance		75 Ω	
Environment condition	Operating Temperature	0 ~ 40°C / 32 ~ 104°F	
	Operating Humidity	Less than 80%	
	Storage Temperature	-20 ~ 60°C / -4 ~ 140°F	
	Storage Humidity	Less than 85%	

MODELS		GML26W44HDF	GML32W44HDF
Dimensions (Width x Height x Depth)	with stand	651.9 x 481.0 x 219.7 mm 26.1 x 20.1 x 9.0 inches	783.5 x 558.6 x 209.4 mm 31.6 x 23.8 x 9.0 inches
	without stand	651.9 x 434.9 x 89.0 mm 26.1 x 17.8 x 3.2 inches	782.5 x 510.2 x 94.5 mm 31.6 x 21.5 x 3.2 inches
Weight	with stand	10.1 kg / 22.3 lbs	13.4 kg / 29.6 lbs
	without stand	8.6 kg / 19.0 lbs	11.9 kg / 26.3 lbs
Power requirement		AC100-240V~ 50/60Hz 1.5A	AC100-240V~ 50/60Hz 1.8A
Power Consumption		120W	180W
Television System		PAL/SECAM B/G/D/K, PAL I/II, SECAM L/L'	
Programme Coverage		VHF: E2 ~ E12, UHF: E21 ~ E69, CATV: S1 ~ S20, HYPER: S21 ~ S47	
External Antenna Impedance		75 Ω	
Environment condition	Operating Temperature	0 ~ 40°C / 32 ~ 104°F	
	Operating Humidity	Less than 80%	
	Storage Temperature	-20 ~ 60°C / -4 ~ 140°F	
	Storage Humidity	Less than 85%	

Goodmans

www.goodmans.co.uk