

# Goodmans

## PERSONAL ENTERTAINMENT SYSTEM GPDR 1



### USER GUIDE



GOODMANS HELPLINE PHONE NUMBER  
0870 873 0080



*Warning:*

*In the event of return of this product, it will only be accepted by the retailer with the supplied 256Mb memory card*

# Important Notes

## **CAUTION**

Keep product out of direct sunlight. Exposure to direct sunlight or extreme heat may cause damage or malfunction. To prevent fire or shock hazard, do not expose to rain or moisture.

## **CAUTION WHILST DRIVING**

Use of headphones whilst operating an automobile or moving vehicle is not recommended. Be careful and attentive on the road. Stop operation of the device if you find it disruptive or distracting whilst driving.

## **CAUTION WHILST PLAYING BACK FILES**

If your file can not be played on the device, check if the file format is supported. If yes, use the included Multimedia Converter to convert it again. It is always recommended to convert video files before uploading to the device for playing back.

## **CAUTION WHILST TRANSFERRING FILES**

Power on the device and use the USB cable to connect it to the PC. The LED indicator will illuminate. The device is now ready for file uploading. When the transmitting starts, the LED will flash. Do not disconnect the USB cable during this period. Otherwise it may cause file loss or system instability.

## **BACK UP YOUR DATA**

As with any device that has flash memory, you should back up the drive regularly.

## **IMPORTANT BATTERY INFORMATION**

The battery used in this device may present a risk of fire or chemical burn if mistreated. Do not separately recharge, disassemble, heat above 60°C (140°F), or incinerate. Do not attempt to open the device. No user serviceable parts inside. Keep the device away from children. Do not disassemble or dispose product in fire.

Use only the specified chargers which were packaged with the product. Use of another charger may present a risk of fire or explosion.

Keep charger plugged in to device for at least 3 hours before attempting to operate device if battery is completely run down and is insufficient to power up device.

## **IMPORTANT RECORDING INFORMATION**

We strongly recommend you to connect the power adapter when you are recording with the device. It ensures sufficient power supply and prevents file damage from power shortage.

# **Table of Contents**

<b>First Time Use &gt;&gt;</b>	<b>4</b>
<b>Location of Controls &gt;&gt;</b>	<b>5</b>
<b>Connecting the Device to a PC or TV &gt;&gt;</b>	<b>7</b>
<b>Software Installation &gt;&gt;</b>	<b>8</b>
<b>Synchronizing Files between PC and GPDR 1 &gt;&gt;</b>	<b>9</b>
Converting and Transferring Files >>	9
Mass Storage Mode >>	10
<b>Disconnecting the GPDR 1 from your COMPUTER &gt;&gt;</b>	<b>11</b>
<b>OSD Menu &gt;&gt;</b>	<b>13</b>
A. Photo Player >>	14
B. Video Player >>	17
C. Audio Player >>	20
D. MP3 Player >>	23
E. AV Recorder >>	25
F. Slide Show >>	28
G. Calendar >>	29
H. Game >>	32
I. Setup Menu >>	34
<b>Direct Print &gt;&gt;</b>	<b>36</b>
<b>Specifications &gt;&gt;</b>	<b>39</b>

# **F**irst Time Use

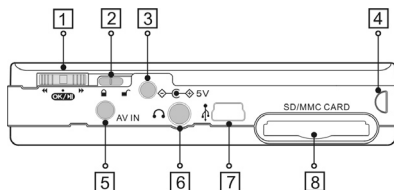
This multi-functional portable device enables you to:

- Play MPEG-4 videos
- View JPEG images
- Record digital videos
- Record digital audio
- Listen to MP3 files
- Use it as an USB Portable Disk
- Use it as a SD/MMC card reader
- Record TV show (MPEG 4 compatible ASF file format)
- Print photos directly without attaching to a PC (DPS-ready)
- Use it as an alarm clock

Check the pack for the following:

- CD Rom Installation & Application Disc
- USB Cable
- AV Cable
- Earphone
- Li-on Battery
- AC Adapter
- Carry Case
- 256MB MMC Card
- Scart to RCA Adapter

# Location of Controls



## 1. Function Scroller

**Play/Pause :** Press the centre button of the scroller to start or pause play-back in Video/Audio/MP3 Player Mode.



**Note:** The centre button of the scroller behaves the same as the OK button on the GPDR 1 front panel.

**Previous/Next :** Scroll up/down and release the scroller to go to previous/next item in Photo/Video/Audio/MP3 Player Mode.

**F.Fwd/F.Bwd :** Scroll up/down and hold the scroller to speed up the play-back of advancing/reversing in Video/Audio/MP3 Player Mode.

**Volume Up/Down :** Press the ● button and then scroll up/down to adjust the volume during playback in Video/Audio/MP3 Player mode.

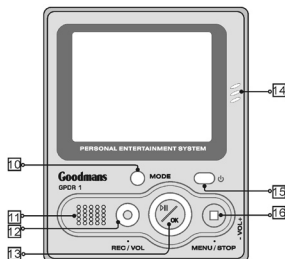
## 2. Hold

Switch to  /  to lock/unlock the buttons (including the scroller) on the GPDR 1.

## 3. DC IN jack

**Power Supply :** Connect the power adapter to DC IN socket whilst using GPDR 1.

**Charge :** Connect the power adapter to DC IN socket to charge the battery.



#### **4. Strap Holder**

#### **5. AV IN socket**

Connect the AV cable to this AV IN socket to enable the recording of TV programmes.

#### **6. Earphone socket**

#### **7. USB port**

#### **8. SD/MMC CARD slot**

#### **9. Battery Cover**

#### **10. Mode/INFO button**

Press the Mode button to switch to different modes.

Press the Info button to turn on/off the information display whilst reviewing a single photo or playing video/audio/MP3 files or recording TV programmes.

#### **11. Speaker**

#### **12. Record/Vol button**

#### **13. Play/Pause/OK button**

#### **14. Microphone**

A built-in microphone for voice record.

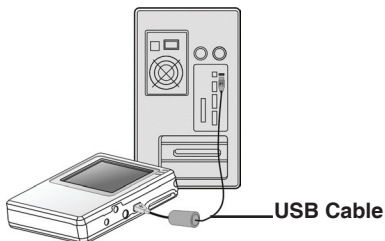
#### **15. Power button**

#### **16. Menu/Stop button**

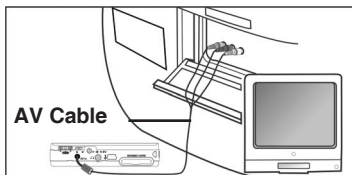
Use this button to call up the menu in each mode.

# Connecting the Device to a PC or TV

## Connecting to a PC



## Connecting to TV

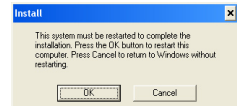
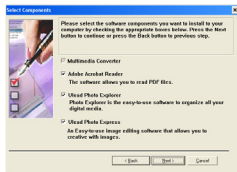


**Note:** For TV or VCR without RCA output socket, use the supplied SCART adapter plug.

# Software Installation

The installation CD bundled with the GPDR 1 contains all the necessary software and useful information (User Guide PDF) you need before operating the device. Please follow the instructions below to complete the software installation.

1. Insert the Installation CD into CD-ROM. The **Select Language** dialog box appears.
2. Select your preferred language and click “OK” to continue.
3. A **Welcome** dialog box appears. Click “Next”.
4. The **Select Components** dialog box appears. Click and select the software to install and then click “Next”.
5. The **Select Program Folder** dialog box appears advising that the setup program is about to add a program icon to the system, you can change the folder name listed in the text box, or simply click “Next” to continue.
6. The **Start Copying Files** dialog box appears confirming that the listed software will be installed. Click “Next” to continue.
7. Follow the on-screen instructions to continue and complete the installation.



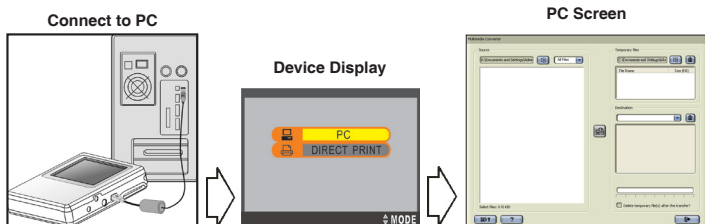






# Synchronizing files between PC and GPDR 1

## Converting and Transferring Files

To synchronize the files between PC and the device, read and follow the instructions below.

1. Power on the device and connect it to the computer with the provided USB cable. The following appears. Then the Multimedia Converter dialog box appears.



2. Press  Browse button to select the path where the required files reside. The files will be listed as thumbnails in the Source field.
3. Press  Browse button to select the path where any temporary files will reside before uploading to the device.
4. Press  Convert button. The conversion starts.
5. The Convert Progress dialog box appears listing the conversion detail. To cancel the conversion, press  button to stop.

**Note:** To select files in the Source window, click on them, the icon border will change from black to red. To select a number of files, hold down the shift or control key whilst selecting with the mouse.

## Multimedia Converter Supported File Type

File Type (Format)	File Extension
Windows Media Audio and Video file format	.asf, wav
Windows Audio and Video file format	DivX AVI, Motion JPEG AVI only
Moving Picture Expert Group (MPEG)	.mpeg, mpg, dat
MP3	.mp3
Image	.bmp, jpg, tif

## Mass Storage Mode

### For PC Users

Connect the device to a computer, an extra disk drive (USB Portable Disk) will appear. The device is now in Mass Storage Mode. In this mode, you can copy, move or delete files (pictures) exactly the way you manipulate files in Windows user interface.

**Note:** For playback purpose, all the files uploaded to the GPDR 1 must be converted by Multimedia Converter first. For file storage, use Mass Storage mode only.

### For MAC Users

(Mac OS: 9.x and 10.1 above)


By connecting the device to a MAC computer (refer to the previous page), it will automatically detect Mass Storage drive. You can easily manipulate your files the way you do in MAC user interface.

Please note! The Multimedia Converter will not function on a MAC computer, only Mass Storage mode can be used.

# Disconnecting the GPDR 1 from your Computer

We strongly recommend to safely remove the device from your computer when it is not in use. Complete the following before removing the USB cable from the device or PC.

## Windows XP

1. Click “Safely Remove Hardware” (  ) icon in the taskbar.
2. Select Safely remove USB Mass Storage Device from the menu.



## Windows 2000/Me

1. Click “Unplug or Eject Hardware” (  ) icon in the taskbar.
2. Select “Stop USB Mass Storage Device” from the menu (Windows 2000).  
Select “Stop USB Disk” from the menu (Windows Me).



## Windows 98


1. In My computer, right click on the removable disk corresponding to the device.
2. Select “Eject” from the menu.

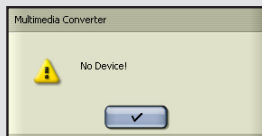


## Mac OS 9.x and 10.1 above

1. Select the device icon (shown as 'NO\_NAME' or 'untitled' drive) on the desktop.
2. Drag and drop the drive to the Trash.

## Notice:

- If the device is not connected to the PC when opening the Multimedia Converter program, a “no device” dialog box will appear, simply click  to continue. The program will launch and all the converted file(s) will be saved and placed in the temporary folder.



Once the device is connected to your PC, the previously converted files will then automatically be uploaded to the device.

- If you don't want to keep the files on your pc for backup, check the option *“delete temporary file(s) after the transfer?”*, then the files saved in the temporary files folder will be deleted after uploading to the device.
- The Destination window will be disabled if the device is not connected to the PC.

If the device is connected to the PC, you will see 4 folders labeled PHOTO, VIDEO, AUDIO and MP3 in this window. The folders are automatically built by the system. All the converted files will be sorted and saved to these folders according to their type.

- To delete the files in stored in the device, select the file in the Destination window and then click  .

## OSD Menu

Power on the GPDR 1, a startup screen appears, then the OSD (on-screen display) menu comes up. The OSD menu contains 9 categories. Each of them provides different functions for users to select.

Before operating the GPDR 1, some important points should be noted.

- For playback purpose, all the files (.asf/.jpg/.mp3/.wav) uploaded to the GPDR 1 must be converted by Multimedia Converter. For file storage, use Mass Storage mode only.
- The GPDR 1 has internal memory. To save files in the internal memory, do not insert external memory card. If an external memory card is inserted in the GPDR 1, only the external memory can be read.
- For better playback speed and viewing quality, all the photos converted by Multimedia Converter will be resized to 640 x 480 pixels to fit the GPDR 1 screen size.  
(The video recorded by GPDR 1 will be at the size of 320 x 240 pixels.)
- The GPDR 1 calendar can record the date up to the year 2036.
- The timer record and alarm clock setting can be preset for up to 24 hours.
- Only one song can be set for alarm clock music. If a song is selected in AUDIO menu and another song is selected in MP3 menu, the system will choose the newest one for alarm clock music.
- It's strongly recommended to turn off the LCD display and plug in the AC adapter whilst using the GPDR 1 for timer record.
- To format the built-in memory, do not insert a memory card in the GPDR 1, otherwise GPDR 1 will erase the data on the memory card instead.



## A. Photo Player

---





To view photos, enter Photo Player function. Use this mode to review photos, record voice clip, add special effects to photos.









To enter the Photo Player  function:









Press OK button or press the centre button of the scroller.

- Scroll up/down the scroller to select previous/next photo
- Press OK button to magnify/shrink the selected photo
- Press  MENU button to enter the Photo Menu. To exit, press  MENU again

The Photo menu contains the following:

 /  <b>Display</b>	 <b>MULTIPLE</b> /  <b>SINGLE photo display</b> Press OK button to enter Display setting. Scroll up/down to select the preferred setting and press the centre button of the scroller to confirm.  You may turn off the Information display whilst reviewing a single photo by pressing Mode/INFO button.
---	---

 <b>Attach Voice</b>	<p>Press the  Menu button and use the scroller to select the Attach Voice function. <b>RECORD</b> will show on the bottom of the screen. Scroll up/down to select the photo to attach voice narration and press the <b>RECORD</b> button to start recording. <b>REC.</b> icon will then show on the top of the screen. To stop recording, press <b>STOP</b> button.</p> <p>When the recording completes, a  icon will appear on the photo to which the voice narration been attached.</p> <p>To review the photo with voice narration, press <b>MENU</b> button and scroll down to select  and then press the centre button. Scroll up/down to select the photo attached with voice narration and press  button to play.</p> <p>To return to a normal play without voice narration, press <b>MENU</b> button again and scroll down to select  and then press the centre button to confirm.</p>
 <b>Effects</b>	<p><b>NEG. ART/SEPIA/B&amp;W/MOSAIC/NORMAL</b></p> <p>Press the  Menu button and use the scroller to select the Effects function. Scroll up/down to select your preferred effect and then press the centre button to confirm. The effect will then be applied to the selected photo and it will be saved as another file (the original will be kept).</p>

 <b>Information</b>	<p><b>ON/OFF</b></p> <p>Press the  Menu button and use the scroller to locate the Information icon. Press the centre button to select it.</p> <p>Scroll up/down to select either to enable or disable the information display and then press the centre button of the scroller to confirm.</p> <p>When the information display is disabled, no indicators or key instructions are shown on the screen (except low-battery indicator) when viewing in single picture mode</p>
 <b>Delete One</b>	<p>Using the scroller select a photo to delete. Press  MENU button and scroll to “Delete One”. Press the centre button of the scroller to enter Delete One setting. A message will prompt asking for confirmation of deletion, press the centre button of the scroller to delete. Otherwise press  STOP button to cancel deletion.</p>
 <b>Delete All</b>	<p>Press the  Menu button and use the scroller to locate the Delete All function. A message will prompt asking for confirmation to delete all the photos in this folder, press the centre button of the scroller to delete all. Otherwise press  STOP button to cancel deletion.</p>











## B. Video Player

---
















With this function you can review videos.




To enter the Video Player function:

Press the MODE button or use the scroller to highlight  and then press the centre button of the scroller to select.

- Use the scroller to select previous/next video
- Press  button to start video playback
- Press  button to stop playback
- Move and hold the scroller to speed up the playback of forwards or backwards. To return to normal playback, release the scroller.
- Use the scroller to go to previous/next video clip during playback.
- Press  button to pause the playing during playback
- Press the  button and use the scroller to adjust the volume during playback. Press  button again to complete the volume adjustment.
- Press  MENU button to enter the Video Menu. To exit the menu, press  MENU button again

The Video menu contains the following:

 /  <b>Display</b>	 <b>MULTIPLE</b> /  <b>SINGLE video display</b> The steps are the same as they are in Photo menu, please refer to “Display” on Page 14. <b>Note:</b> Only the first frame will be displayed here.
 <b>Repeat</b>	 <b>NORMAL</b> /  <b>ONE</b> /  <b>ALL</b> /  <b>A-B</b>  <b>To repeat one:</b> Scroll down and press the centre button of the scroller to select the Repeat mode. Scroll to “ONE” and press the centre button of the scroller to confirm. Press  MENU button to exit. Use the scroller to select a video file. Press the centre button of the scroller to start playback. The selected video file will then be played repeatedly until the  STOP button is pressed. To return to normal playback, select NORMAL in Repeat mode.  <b>To repeat all:</b> Scroll down and press the centre button of the scroller to enter Repeat mode. Scroll to “ALL” and press the centre button of the scroller to select. Press  MENU button to exit. Press  button to start playback. All video files will be repeatedly played from the first one to the last continuously. To return to normal playback, select NORMAL in Repeat mode.


	<p>↺ <b>To repeat A-B:</b> Scroll down and press the centre button of the scroller to enter Repeat mode. Scroll to “A-B” and press the centre button of the scroller to select. Press ■ MENU button to exit.</p> <p>Scroll up/down to select a video to review. Press ►   button to start the playback. The ►   button will be labeled “SET A”, press the button to set the start point of the repeat playback. The ►   will then be labeled “SET B”, press ►   button again to set the end of the playback. The video will be repeated playing back between point A and B. To cancel the playback, press ►   to stop.</p>
 <b>Information</b>	<p><b>ON/OFF</b></p> <p>The use is the same as it is in Photo menu, please refer to “Information” on Page 16.</p>
 <b>Delete One</b>	<p>The use is the same as it is in Photo menu, please refer to “Delete One” on Page 16.</p>
 <b>Delete All</b>	<p>The use is the same as it is in Photo menu, please refer to “Delete All” on Page 16.</p>









## C. Audio Player

---








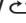


Use this function to record/playback audio, choose an audio file for alarm clock sound , add audio effects and so on.




To enter the Audio Player function:

Press the MODE button or use the scroller to highlight  and then press the centre button of the scroller to select.

- Use the scroller to select previous/next audio file
- Press  button to start audio playback
- Press  button to stop playback
- Move and hold the scroller to speed up the playback of forwards or backwards during playback. To return to normal playback, release the scroller.
- Use the scroller to go to previous/next audio file during playback.
- Press  button to pause playback
- Press  button to start recording audio (.wav file) from the built-in microphone
- Press  button and use the scroller to adjust the volume during playback. Press  button again to complete the volume adjustment.
- Press  MENU button to enter the Audio Menu. To exit the menu, press  MENU again

The Audio menu contains the following:

<p> <b>Quality</b></p>	<p><b>LP  LONG PLAY (LOW) / SP  STANDARD PLAY (HIGH)</b></p> <p>Press the centre button of the scroller to select Quality setting. Scroll up/down to select the preferred setting and press the centre button of the scroller to confirm.</p> <p><b>Note:</b> The higher the quality, the bigger the file size and the more storage space it takes.</p> <p>* 128 MB can store up to approximately 180 minutes on low quality setting</p> <p>* 128 MB can store up to approximately 90 minutes on high quality setting</p>
<p> <b>Search</b></p>	<p>Scroll down and press the centre button of the scroller to select Search.</p> <p>Press  button, the search starts. The GPDR 1 will play each audio file in the current folder for 5 seconds.</p>
<p> <b>Repeat</b></p>	<p> <b>NORMAL</b> /  <b>ONE</b> /  <b>ALL</b> /  <b>A-B</b></p> <p>The use is the same as it is in Video menu, please refer to "Repeat" on Page 18-19.</p>


 <b>Alarm Clock</b>	<p>Scroll up/down and press the centre button of the scroller to select an audio file. Press <b>■</b> MENU button and scroll to Alarm Clock setting and then press the centre button of the scroller to enter. Again, press the centre button of the scroller to set the time. Scroll up/down to set the <b>HOURL</b> and press the centre button of the scroller to confirm and continue. Scroll up/down to set the <b>MINUTE</b> and press the centre button of the scroller to confirm and continue. Scroll up/down to set the <b>SECOND</b> and press the centre button of the scroller to confirm.</p> <p>Scroll down to <b>SAVE</b> and press the centre button of the scroller to keep the setting.</p> <p><b>Important Note:</b> The Alarm feature will only function whilst the device is switched on. If it is intended to use this as a wake up alarm clock, then the power saving feature must be switched to NEVER and the AC adapter must be connected at all times.</p>
<b>EQ</b> <b>EQ</b>	<p><b>BASS/ROCK/JAZZ/CLASSIC/POP/NORMAL</b></p> <p>Scroll down and press the centre button of the scroller to enter EQ (equalizer) setting. Scroll up/down to select the preferred setting and press the centre button of the scroller to confirm the new EQ setting.</p>
 <b>Delete One</b>	<p>The use is the same as it is in Photo menu, please refer to "Delete One" on Page 16.</p>
 <b>Delete All</b>	<p>The use is the same as it is in Photo menu, please refer to "Delete All" on Page 16.</p>

## D. MP3 MP3 Player

---










Use this function to listen to MP3 music, choose a song for alarm clock sound , add audio effects and so on.

To enter the MP3 Player function:

Press the MODE button or use the scroller to highlight  then press the centre button of the scroller to select it.

- Use the scroller to select previous/next MP3 file
- Press ►|| button to start playback
- Press ■ button to stop playback
- Move and hold the scroller to speed up the playback of forwards or backwards during playback. To return to normal playback, release the scroller.
- Use the scroller to go to previous/next MP3 file during playback.
- Press ►|| button to pause playback
- Press ● button and scroll up/down the scroller to adjust the volume during playback. Press ● button again to complete the volume adjustment.
- Press ■ MENU button to enter the MP3 Menu. To exit the menu, press ■ MENU again

The MP3 menu contains the following:

 <b>Alarm Clock</b>	<p>Press the centre button of the scroller to enter Alarm Clock setting.</p> <p>Press the centre button of the scroller to set the time. Scroll up/down to set the <b>HOUR</b> and then press the centre button of the scroller to confirm and continue. Scroll up/down to set the <b>MINUTE</b> and then press the centre button of the scroller to confirm and continue. Scroll up/down to set the <b>SECOND</b> and then press the centre button of the scroller to confirm.</p> <p>Scroll down to <b>“SAVE”</b> and press the centre button of the scroller to keep the setting.</p> <p><b>Important Note:</b> The Alarm feature will only function whilst the device is switched on. If it is intended to use this as a wake up alarm clock, then the power saving feature must be switched to NEVER and the AC adapter must be connected at all times.</p>
 <b>Search</b>	<p>The use is the same as it is in Audio menu, please refer to “Search” on Page 21.</p>
 <b>Repeat</b>	<p> <b>NORMAL</b>/ <b>ONE</b>/ <b>ALL</b>/ <b>A-B</b></p> <p>The use is the same as it is in Video menu, please refer to “Repeat” on Page 18-19.</p>
<b>EQ</b> <b>EQ</b>	<p><b>BASS/ROCK/JAZZ/CLASSIC/POP/NORMAL</b></p> <p>The use is the same as it is in Audio menu, please refer to “EQ” on Page 22.</p>
 <b>Delete One</b>	<p>The use is the same as it is in Photo menu, please refer to “Delete One” on Page 16.</p>
 <b>Delete All</b>	<p>The use is the same as it is in Photo menu, please refer to “Delete All” on Page 16.</p>



## E. 📺 AV Recorder



With this function a favorite TV show can be recorded directly to the device or a timed recording can be set.

To enter the AV Recorder function:

Press the MODE button or use the scroller to highlight 📺 and press the centre button of the scroller to select.


- Press ● button to start recording
- Press ■ button to stop recording
- Press ■ MENU button to enter the AV Recorder Menu. To exit the menu, press ■ MENU again

The AV Recorder menu contains the following:

 <b>Timer Record</b>	 <b>TIME</b> Press the centre button of the scroller to enter Timer Record setting.  Press the centre button of the scroller to set the time. Scroll up/down to set the <b>HOURL</b> and press the centre button of the scroller to confirm and continue. Scroll up/down to set the <b>MINUTE</b> and press the centre button of the scroller to confirm and continue. Scroll up/down to set the <b>SECOND</b> and press the centre button of the scroller to confirm.  <b>Note:</b> For TV connection, please refer to "RECORD TV SHOW" in the Quick Guide.
--	--



## LENGTH


Scroll down to “” and press the centre button of the scroller to set the recording time.

Scroll up/down to the **HOUR** and press the centre button of the scroller to confirm and continue.

Scroll up/down to set the **MINUTE** and press the centre button of the scroller to confirm and continue.

Scroll up/down to set the **SECOND** and press the centre button of the scroller to confirm.

Scroll down to “**SAVE**” and press the centre button of the scroller to save the setting.

**Note:** When the above setting is complete, a “” icon will appear on the top of the LCD display. Meanwhilst the device is awaiting timer record. Do not switch to other modes or power off the device or the connected video source (TV) during this period, otherwise the timer record will fail.



## Quality




### LP LONG PLAY (LOW) / SP STANDARD PLAY (HIGH)

The use is the same as it is in Audio menu, please refer to “Quality” on Page 21.

**Note:** The higher the quality, the bigger the file size and the more storage space it takes.

\* 128 MB can record up to approximately 60 minutes with low quality setting (Depending on the video contents)


\* 256 MB can record up to approximately 60 minutes with high quality setting (Depending on the video contents)

 <b>Information</b>	<p><b>ON/OFF</b></p> <p>The use is the same as it is in Photo menu, please refer to “Information” on Page 16.</p>
<p>  <b>LCD Off</b></p>	<p>It is recommended to turn off the LCD display for power-saving during timer record. Whilst the GPDR 1 is waiting to record a timed event, the blue LED will flash as a reminder that a timed recording has been activated.</p> <p>To turn off the LCD, scroll down and press the centre button of the scroller to select LCD setting. A message will prompt asking to turn off the LCD display will be seen, press the centre button of the scroller to confirm. Otherwise press  STOP button to cancel.</p> <p>To turn on the LCD display, press any button or the scroller (except the Power button).</p>

## F. Slide Show



This function allows the review of photos as a slide show.

To enter the Slide Show function:

Press the MODE button or use the scroller to highlight  and press the centre of the scroller or press OK button to select.

- Use the scroller to select a photo as the beginning of the slide show
- Press ►|| button to start the slide show
- Press ■ button to stop slide show playback
- Press ■ MENU button to enter the Slide Show Menu. To exit the menu, press ■ MENU again


The Slide Show menu contains the following:

 <b>Interval</b>	<p>Press the centre button of the scroller to enter <b>Interval</b> setting.</p> <p>The default timing between slides is set to 5 seconds. To change this setting, press the centre button of the scroller and use the scroller to increase/decrease the time. When the setting is done, press the centre button to confirm.</p> <p>To save the new setting, scroll down to <b>SAVE</b> and press the centre button of the scroller.</p>
 <b>Information</b>	<p><b>ON/OFF</b></p> <p>The use is the same as it is in Photo menu, please refer to “Information” on Page 16.</p>

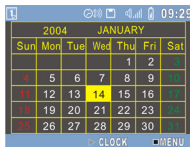
## G. 1 Calendar

This GPDR 1 includes an electronic calendar and clock.

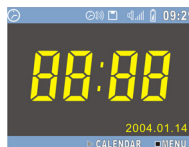
To enter the Calendar function:

Press the MODE button or use the scroller to highlight  and press the centre button of the scroller to select. The calendar displays. To toggle between calendar and clock view, press ►|| button.

To adjust the date and time settings, press ■ MENU button. The Calendar menu contains the following:



Calendar View



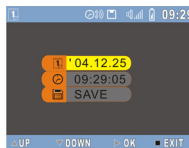
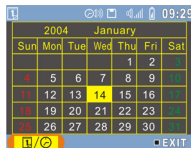
Clock View



## Date/Time

### 1 DATE

Press the centre button of the scroller to enter Date/Time setting.



To change the date setting, press the centre of the scroller or press OK button.

*Step 1.* Scroll up/down to change the **YEAR** and press the centre button of the scroller to confirm and continue.

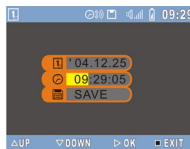
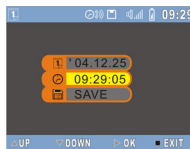
*Step 2.* Scroll up/down to change the **MONTH** and press the centre button of the scroller to confirm and continue.

*Step 3.* Scroll up/down to change the **DAY** and press the centre button of the scroller to confirm.

To save the changes made, scroll down to **SAVE** and press the centre button of the scroller.

## **TIME**

To change the time setting, scroll down to **TIME** adjustment, and press the centre button of the scroller.



*Step 1.* Scroll up/down to change the **HOUR** and press the centre of the scroller or press OK button to confirm and continue.

*Step 2.* Scroll up/down to change the **MINUTE** and press the centre of the scroller or press OK button to confirm and continue.

*Step 3.* Scroll up/down to change the **SECOND** and press the centre of the scroller or press OK button to confirm.


To save the changes made, scroll down to **SAVE** and press the centre button of the scroller.

To exit the menu, press  **MENU** button.

## H. Game

There are 2 games available on the GPDR 1. They are Puzzle and Tic-Tac-Toe.

To enter the Game function:

Press the MODE button or use the scroller to highlight  and then press the centre button of the scroller to select.




The screen on the left appears:

Press the centre button of the scroller to enter the TIC-TAC-TOE game or scroll down to select the PUZZLE game.



### TIC-TAC-TOE

- Scroll up/down and press the centre of the scroller or press OK button to choose to start the game first or let the device go first
- The first player is “O”. The other one is “X”
- Press the centre of the scroller or press OK button to start
- Select the square you want to place your symbol (“O” or “X”) in by scrolling up/down and then press the centre of the scroller or press OK to confirm
- The first player to complete a row of three square is the winner
- You can't occupy a square that is already occupied
- To stop the game during play, press  button at anytime







## PUZZLE


- Scroll up/down to select a numbered square you want to move with the floating frame and then press the centre of the scroller or press OK button to confirm
- Players have to arrange all the numbered square in sequence within 50 seconds
- Only the squares next to the floating frame can be moved
- To stop the game during playing, press ■ button at anytime



## I. Setup Menu


---


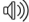


To enter the Setup Menu:

Press the MODE button or use the scroller to highlight  and press the centre button of the scroller to select.

The Setup Menu appears. Scroll up/down and press the centre button of the scroller to select each item.

The Setup Menu contains the following:

<b>STARTUP SOUND</b>	<b>OFF/ON</b> Scroll up/down to turn off/on the startup sound and then press the centre button of the scroller to confirm.
<b>STARTUP SCRN</b>	<b>OFF/IMAGE</b> Scroll up/down to disable/enable startup screen and then press the centre button of the scroller to confirm.
 <b>AUTO LCD OFF</b>  * This setting is unpracticable in AV Recorder mode.	<b>30 Sec/1 Min/1.5 Min/2 Min/NEVER</b> Scroll up/down to set up the timing you want to turn off the LCD display and press the centre button of the scroller to confirm.  <b>Note:</b> The LCD display is preset to “AUTO LCD OFF” after 30 seconds of non-operation.

<p> <b>AUTO POWER OFF</b></p> <p>* This setting is automatically disabled in AV Recorder mode.</p>	<p><b>1.5 Min/3 Min/5Min/NEVER</b></p> <p>Scroll up/down to set up the timing you want to power off the GPDR 1 when it is not in use.</p> <p>Press the centre button of the scroller to confirm.</p> <p><b>Note:</b> The GPDR 1 is preset to “AUTO POWER OFF” after 1.5 minutes of non-operation.</p>
<p> <b>BEEP</b></p>	<p><b>ON/OFF</b></p> <p>Scroll up/down to turn the beep on/off, press the centre button of the scroller to confirm.</p>
<p> <b>FORMAT</b></p>	<p>When the format option is chosen, a message will prompt to confirm format, press the centre button of the scroller to confirm. Otherwise press  <b>STOP</b> button to cancel.</p> <p>Important Note: If an external SD/MMC card is inserted, the device will format the card and all contents will be lost.</p>



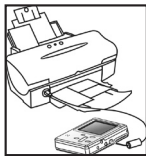
# Direct Print

**Direct Print** Direct Print provides a direct connect solution for this GPDR 1 to communicate with the printers. If you connect GPDR 1 to a printer which supports DPS (Direct Print Services), then the photos stored in the GPDR 1 can be printed directly without attaching to a computer. It's that easy!

Follow the steps below to print photos:

## Step 1. Connecting to a printer

Power on the GPDR 1. Connect one end of the included USB cable to the USB port of the GPDR 1, the other end to the USB port of the printer.



## Step 2. Selecting DIRECT PRINT

Upon connecting the GPDR 1 to a printer, a mode selection screen appears. Press the MODE button to enter DIRECT PRINT.

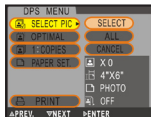


## Step 3. Selecting Photos

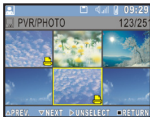
A message appears reminding you not to connect to PC. Press the OK button to continue. The DPS menu appears. Press the OK button to enter the SELECT PIC menu.

**Compatibility Note:** Please note with some photo printers the message “No Support” may be seen, in this case pictures may still be printed but no adjustment will be possible.

## Select Particular Photos



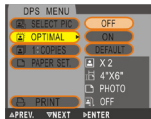
Press the OK button twice and scroll up/down to select the photos then press the OK button to confirm. A printer icon will appear on the selected photos. When the selection is complete, press the **■** button to return.



## Select All Photos

Press the OK button and scroll down to ALL then press the centre button of the scroller to confirm. All the photos will then be selected.

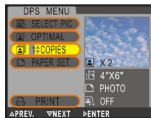
## Step 4. Enhancing Photo Quality



Scroll down to OPTIMAL. The default is set to “OFF”. To change the setting, press the centre button of the scroller and scroll down to select “ON”. Press the centre button to confirm.

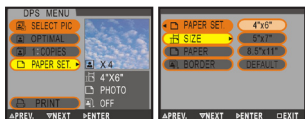
**Note:** To skip this step, select CANCEL in the menu.

## Step 5. Setting Copy Numbers



Scroll down to COPIES. The default setting is set to “1”. To change the setting, press the centre button of the scroller and scroll up to increase the copy number.

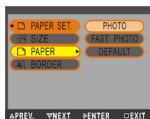
## Step 6-1. Setting Paper Size



Scroll down to PAPER SET. You can change the paper size, paper type, and border settings. To change the paper size setting, press the centre button and use the scroller to select the preferred size.

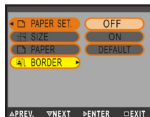
Press the centre button to confirm.

## Step 6-2. Setting Paper Type




Scroll down to PAPER. To change the paper type, press the centre button and use the scroller to select the preferred paper. Press the centre button to confirm.

## Step 6.3. Setting Borders




Scroll down to BORDER. To change the border setting, press the centre button and use the scroller to either add a border, cancel a border or keep the photo in its original format. Press the centre button to confirm.

Once satisfied with the PAPER settings, press  button to return to DPS menu.



## Step 7. Printing...

Scroll down to PRINT. Press the OK button to start printing. To cancel the printing, press  button at anytime.

# Specifications

<b>Product Function</b>	Digital Photo Player, Digital Video Player, Digital Video Recorder, Digital Voice Recorder, MP3 Player, Language Learning Player, USB Portable Disk, SD/MMC Card Reader
<b>Display</b>	2.5" TFT LCD
<b>Microphone</b>	Built-in
<b>Speaker</b>	Built-in
<b>TV System</b>	NTSC/PAL
<b>DPS Support</b>	Yes
<b>Audio Effects</b>	POP/Jazz/Classic/Bass/Rock
<b>Interface</b>	USB/AV In/Earphone/DC-in
<b>Memory Card Slot</b>	Up to 512 MB SD/MMC cards supported
<b>Internal Memory</b>	Built-in 32MB
<b>File Format</b>	ASF(video)/JPG(photo)/MP3/WAV(audio)
<b>Power</b>	Rechargeable Li-ion Battery 1000 mAh x1 ; Power Adapter
<b>Mass Storage</b>	Windows 98 SE/Me/2000/XP ; Mac OS 9.X and 10.1 above (Mass Storage only)
<b>Dimensions</b>	96 x 77 x 20 mm
<b>Weight</b>	110g (without battery)
<p>* For playback purpose, all the files (.asf/.jpg/.mp3/.wav) uploaded to the GPDR 1 must be converted by Multimedia Converter. For file storage, use Mass Storage mode only.</p>	