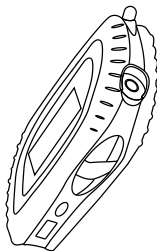


Goodmans

User Manual

Personal MP3 Player

GMP313/GMP315/GMP317



To operate this device correctly, please read this Manual carefully before using the MP3 Player
www.goodmans.co.uk

CONTENTS

1. Important Notes	1	b) Skip / Search Up / Down	21
2. Illustration	3	c) Repeat / Random	21
a) Location of Controls	3	11. Preset EQ	22
b) Display	4	12. Voice Record Mode	23
c) Insertion of Battery	5	a) Start / Stop / Pause / Recording	23
3. Minimum System Requirement	6	b) Recording Quality	23
4. Setting Up Your Computer	7	c) Recording Time	24
a) For Windows 98	7	13. Voice Playback Mode	25
b) For Windows 2000 / ME / XP	9	a) Play / Pause / Stop	25
5. Transferring Non-encrypted Audio and Data	10	b) Repeat / Random	25
6. Disconnecting Your Player	13	14. System Menu	27
7. What is DRM?	14	a) Record Time	27
8. DRM Operation	14	b) Backlight	28
a) Downloading DRM 10 Encoded Files	15	c) Power Off	28
b) Downloading DRM 9 Encoded Files	17	d) Contrast	28
9. General Operation	18	e) Online Device	29
a) Power On / Off	18	f) Memory Info	30
b) Main Menu	18	g) Firmware Version	30
c) Volume Up / Down	19	h) DRM Time	30
d) Hold	19	15. Frequently Asked Questions	32
10. Music Playback Mode	20	16. Troubleshooting Guide	33
a) Play / Pause / Stop	20	17. General Specification	34

IMPORTANT NOTES

Your Hearing is very important to you and to us so please take care when operating this equipment. It is strongly recommended that you follow the listed guidelines in order to prevent possible damage or loss of hearing.

ESTABLISH A SAFE SOUND LEVEL

- Over time your hearing will adapt to continuous loud sounds and will give the impression that the volume has in fact been reduced. What seems normal to you may in fact be harmful. To guard against this **BEFORE YOUR HEARING ADAPTS** set the volume at a low level
- Slowly increase the level until you can hear comfortably and clearly and without distortion
- Damage to your hearing is accumulative and is irreversible
- Any ringing or discomfort in the ears indicates that the volume is too loud.

Once you have established a comfortable listening level, **DO NOT INCREASE THE SOUND LEVEL FURTHER.**

The following list of typical sound levels may assist you in recognizing just how loud you have set the volume level.

DECIBEL

Level dB

Example

30dB	Quiet Library, soft whispers
40	Living room, fridge-freezer, bedroom away from traffic.
50	Normal conversation, quiet office, light traffic.
60	Electric sewing machine.
70	Vacuum cleaner, hair dryer, noisy restaurant.

THE FOLLOWING NOISES CAN BE HARMFUL UNDER CONSTANT EXPOSURE

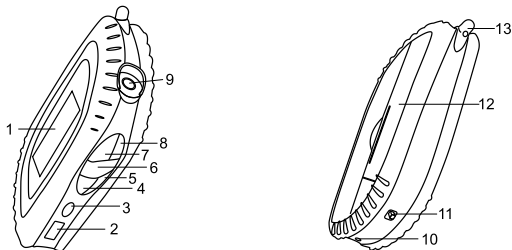
80dB	Average city traffic, alarm clock buzzer at 2 feet, food mixer.
90	Motorcycle, heavy goods vehicle, petrol lawn mower.
100	Pneumatic drill, chain saw, garbage truck, discoed / night club.
120	Rock band concert, thunderclap.

PERMANENT LOSS OF HEARING

140	THRESHOLD OF PAIN Gunshot 2 feet away.
180	Rocket launching pad.

ILLUSTRATION

LOCATION OF CONTROLS



1. Display

2. USB Connection Socket

3. Menu

4. Next (▶▶)

5. Volume up (+)

6. On/Off/Play/Pause/Stop (▶||■)

7. Previous (◀◀)

8. Volume down (-)

9. Earphone Socket

10. Microphone

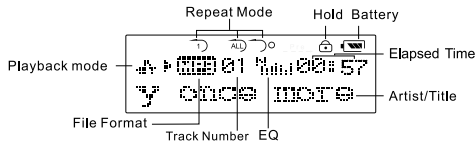
11. Hold Switch

12. Battery Compartment
Cover

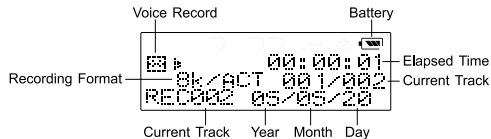
13. Neck Strap Hook

DISPLAY

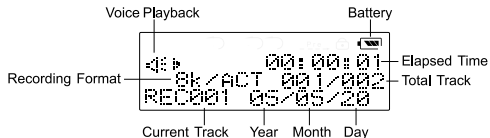
Music Playback Mode:



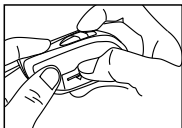
Record Mode:



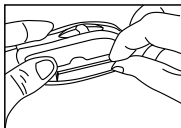
Voice Playback Mode:



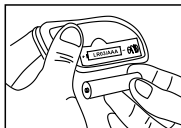
INSERTION OF BATTERY



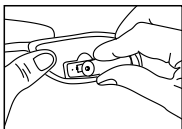
1



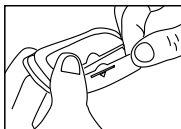
2



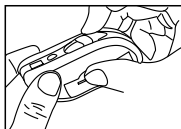
3



4



5



6

1. and 2. Open and remove the battery compartment cover as shown.
3. Match correct polarities (+ & -) on the battery with the diagram.
4. Insert battery.
5. and 6. Reattach the battery compartment cover as shown.

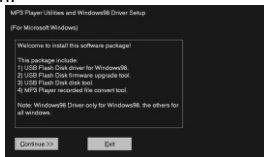
MINIMUM SYSTEM REQUIREMENT

- Microsoft® Windows XP, Windows Millennium Edition (Me), Windows 2000 or Windows 98 Second Edition (SE)
*For operating with DRM 10 protected WMA files, the minimum requirement is Windows XP. Also Windows Media Play 10 must be installed as well.
- Intel® Pentium® II 233 MHz, or AMD K6® -2 266 MHz
- 32 MB RAM
- 30 MB available hard disc space
- CD-ROM/ DVD-ROM driver
- USB Port

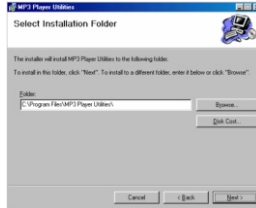
SETTING UP YOUR COMPUTER

FOR WINDOWS 98:

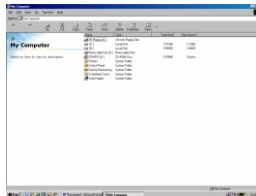
1. Start up Windows and insert the CD (Setup Software Driver for Windows 98) into the driver.
2. Run the program setup.exe from the disk driver, the installation icon will appear on the desktop.
Press "Next" to start installation.



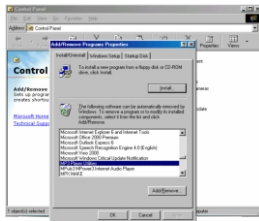
3. Press "Next" to accept the default install location for the driver.



4. Connect the MP3 Player to your PC; the "New Hardware Found" message will pop up. You will find a removable driver appear under "My Computer" .



5. To uninstall the software, click "Start" , enter into "Control Panel" - "Add / Remove Program", then select "MP3 Player utilities" from the menu and click on "Add/Remove".



FOR WINDOWS 2000/ ME/ XP

1. Windows 2000 / ME / XP does not need driver installation. Just plug in the MP3 player to the computer, Windows will detect the driver automatically and pop up with a message "New Hardware Found" and "USB Mass Storage Device" will be installed.
2. A Removable Disk will show in "My Computer" ,normally as the E: drive, but the actual letter is dependant on how many drives are already installed.

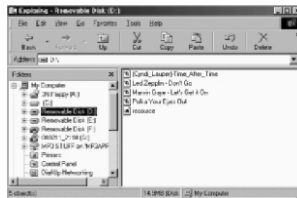
TRANSFERRING AUDIO AND DATA

When you wish to download additional music tracks to your player, you can either download music tracks from an Internet music site or rip them from your audio CDs to create digital files on your computer (software is not provided). Music files can be encoded into the supported formats (MP3 or WMA), and then transferred to your player via your computer. Data files can also be transferred to and stored in your player, for example, you can transfer a data file from one computer to another.

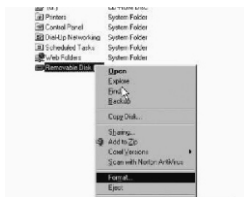
TO TRANSFER AUDIO AND DATA

For MP3, WMA (non-DRM)

1. Please ensure that one AAA battery is inserted otherwise data corruption may occur if the power fails during transfer.
2. Connect your player to the USB port of your computer using the supplier USB cables.
3. Windows Device Manager will recognize the MP3 player.
4. Launch Windows Explorer.
5. "Removable Disk" will appear under "my computer".



6. To format the onboard memory before downloading songs to the MP3 player. Go to "My computer" and right click on the "Removable Disk", then click on "Format".



7. It will launch a format dialogue box, if there is a file system option please ensure that FAT is selected (NOT FAT32), then click on start to format your player.

**WARNING**

NEVER USE OTHER SOFTWARE TO
FORMAT THE PLAYER. THIS MAY CAUSE
AN IRREVERSIBLE MALFUNCTION.

**** NOTE:** If you have selected a different file system to FAT on "File System" option when for formatting, it may cause a malfunction. Please re-format it using the "FAT" option to repair.

8. To load files onto your player double click on the removable drive icon in My Computer to open the drive. Select the files that you wish to load onto the player by highlighting them and then, drag and drop them into this removable drive window.
9. Before disconnecting your player from the computer follow the instructions below "Disconnecting Your Player".

**** Note: ALWAYS FOLLOW THE INSTRUCTIONS GIVEN IN "DISCONNECTING YOUR PLAYER" BEFORE UNPLUGGING THE PLAYER FROM THE PC OTHERWISE THE DATA STORED ON THE PLAYER MAY BE CORRUPTED.**

DISCONNECTION YOUR PLAYER

To stop your player in Windows XP, Windows Me or Windows 2000(MASS STORAGE MODE ONLY):

Double click the **Safely Remove Hardware** icon on the Taskbar, ensure that the USB MASS STORAGE DEVICE is highlighted and click on the "STOP" button, and then confirm by clicking on the "OK" button and disconnect your player when you are prompted.



To stop your player in windows 98SE:

In windows explorer, right-click the **Removable Disk** icon, click the Eject option, and disconnect your player when you are prompted.



Figure 3-5: Stopping your player in Windows 98 SE

WHAT IS DRM?

DRM is Digital Rights Management, it is a way of protecting copyrighted material in the digital age. It has come about due to the ease of copying material using digital methods. Basically the DRM encryption will limit usage of the file to certain hardware that is compatible with DRM encryption. This does not mean that a DRM encrypted file cannot be downloaded to non-DRM compatible hardware only that the file will not play.

DRM can also be used to set the number of times that the file can be burned to CD, how many different pieces of hardware/equipment it can be copied to etc. In the most recent version of the DRM (DRM 10) there is also an option to set how long the file can be used for. This time restriction is a method that is currently used by some Music Download websites.

NOTE: DRM 10 FILES CAN ONLY BE USED WHEN YOUR PLAYER IS CONNECTED TO A PC RUNNING WINDOWS XP AND WINDOWS MEDIA PLAYER 10

DRM OPERATION

Your player is compatible with both DRM 9 and DRM 10 encrypted files. These files are normally obtained from Music Download Websites. The following instructions are only given as a guide, please check with your content provider for any specific procedure for use with their service.

NOTE: DRM FILES CANNOT BE DOWNLOADED USING MASS STORAGE DRAG AND DROP, IF THE FILES ARE TRANSFERRED USING THIS METHOD THEY WILL NOT PLAY. BEFORE DOWNLOADING DRM 10 ENCRYPTED FILES THE DRM TIME MUST BE SET. PLEASE FOLLOW THE INSTRUCTIONS "SETTING DRM TIME" BELOW.

DRM 10 files can only be downloaded to the player when the player connects as a "MEDIA DEVICE", this allows the player to be "Synchronised" with the computer to allow playback. This is the default mode that the unit is set to when connecting to a computer with WINDOWS XP. When in this mode files cannot be "dragged and dropped" as they can in MASS STORAGE MODE. The mode can be changed to "MASS STORAGE" via the "ONLINE DEVICE" in the SYSTEM menu (Please see "SYSTEM MENU" section below). When set to MASS STORAGE mode DRM 10 encrypted files will not play when transferred th the player.

NOTE: THE PLAYER CAN ONLY CONNECT AS A MEDIA DEVICE WHEN USED WITH A COMPUTER RUNNING WINDOWS XP WITH WINDOWS MEDIA PLAYER 10, IT IS NOT COMPATIBLE WITH ANY OTHER OPERATING SYSTEMS. IF YOU TRY TO CONNECT TO ANY OTHER OPERATING SYSTEM THE UNIT WILL AUTOMATICALLY CONNECT AS A MASS STORAGE DEVICE.

DOWNLOADING DRM 10 ENCODED FILES

The following has been extracted from the Windows Media Player 10 Help file © Microsoft

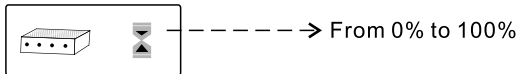
"When you connect your device to your computer for the first time, Windows Media Player starts the Device Setup Wizard, which helps you set up automatic or manual synchronisation between the Player and your device.

When you connect your device to your computer after automatic synchronisation has been established, the Player and the device begin synchronising the content you selected, until all of the items are synchronised. If the Player detects that your device does not have enough room to store all of the automatically synchronised content, the Player and the device will synchronise content in priority order, either by default priority order or by a priority order that you select.

When you connect your device to your computer after manual synchronisation has been established,

you must select the content and specify the order in which it is synchronised. If the Player detects that your device does not have enough room to store all of the manually synchronised content, it will display a message next to the items that it cannot synchronise to your device. You can change the synchronisation order or delete items from the synchronisation list, and then start synchronisation manually. When synchronisation finishes, the message "Synchronisation is complete" is displayed above the Items to Sync pane (the left side of **Sync**) and two types of categories are displayed in the Items to Sync pane: the number of items that were synchronised successfully and the number of items that were not synchronised due to errors, along with the error details. There may be more than one error category displayed if different types of errors occurred during synchronisation. You can expand these categories to view the individual items that failed to synchronise due to errors and take the appropriate steps. You can also view the synchronised files on the device by expanding the category or playlist that contains the items in the Items on Device pane (the right side of **Sync**).

After the desired files have been downloaded to the player, disconnect the player from the computer and the following will be shown in the display:



This screen is shown when the player synchronises the licenses that allow the DRM 10 encoded files to be played. This process can take several minutes. Once this screen is no longer shown you can now play your downloaded tracks.

For full instructions on using Windows Media Player 10 to synchronise files to your player please consult the help file that is supplied with Windows Media Player 10.

DOWNLOADING DRM 9 ENCODED FILES

1. Please ensure the one AAA battery is inserted into the player before transferring files to your player.
2. Open Windows Media Player
3. Highlight the files to be downloaded in the Windows Media Player library, right click on the files and from the pop menu select either "COPY TO CD OR DEVICE" (Windows Media Player 9) or "ADD SYNC LIST" (Windows Media Player 10).
4. Depending on which version of Windows Media Player you have select "COPY TO CD OR DEVICE" (Windows Media Player 9) or "SYNC" (Windows Media Player 10) tab.
5. Normally there will be two panes shown, on the left will be the files that you have selected to be downloaded to the player. On the right will be the contents of the player.
6. Select "COPY" (in the top right corner Windows Media Player 9) or "START SYNC" (Windows Media Player 10) to download the files.
7. Disconnect the player as described below.

For further information on downloading DRM 9 encoded files to your player using Windows Media player please consult the help file supplied with Windows Media Player.

GENERAL OPERATION

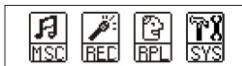
POWER ON/OFF

To turn on the player press and hold the PLAY/PAUSE/STOP button (▶/■), Music mode playback will commence automatically.


To turn off the player press and hold the PLAY/PAUSE/STOP button (▶/■) when playback/recording is stopped.


MAIN MENU


To access the main menu, press and hold the MENU button. The following will be shown in the display.




The options are as follows:

 **Music:** This is the default mode that will be selected when the player is turned on and is used for playback of MP3/WMA files

 **Voice Record:** Select this mode to make a voice recording using the internal microphone.

 **Voice Record Playback:** Select this mode to playback any voice recordings already made.

 **System Menu:** Select this option to change the preference settings.

Each of the above modes are explained below.

VOLUME UP/DOWN

To increase the volume press the volume up (+) button. The volume level will be shown in the display.

To decrease the volume press the volume down (-) button. The volume level will be shown in the display.

HOLD

To prevent the keys from being pressed accidentally (for example whilst in a pocket) move the hold switch towards the "HOLD" mark. To release the key lock move the switch to the position away from the "HOLD" mark. If any button is pressed whilst the keys are locked the following will be shown in the display:

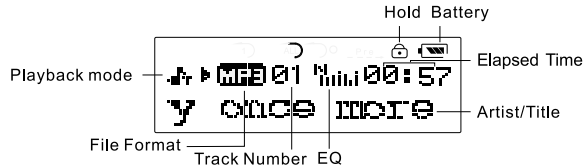


MUSIC PLAYBACK MODE

This is the default mode when turning on the player and is used for playback of MP3/WMA files.

Welcome!

The below display is shown when in playback mode.



PLAY/PAUSE/STOP

Press the PLAY/PAUSE/STOP button (▶/■) briefly to commence playback.

During playback press the PLAY/PAUSE/STOP button (▶/■) briefly to pause playback.

During playback press and hold the PLAY/PAUSE/STOP button (▶/■) for approximately two seconds to stop playback.

SKIP/SEARCH UP/DOWN

To skip to the next or previous track briefly press the SKIP/SEARCH UP (▶▶) or SKIP/SEARCH DOWN (◀◀) buttons.

To search at high speed for a particular section of a song press and hold the SKIP/SEARCH UP (▶▶) or SKIP/SEARCH DOWN (◀◀) buttons until the desired section is found. To resume normal playback release the button.

REPEAT/RANDOM

Briefly press the MENU button whilst in MUSIC PLAYBACK MODE to display the MUSIC PLAYBACK MODE MENU. Repeatedly press the SKIP/SEARCH UP (▶▶) or SKIP/SEARCH DOWN (◀◀) buttons until REPEAT is shown in the display. Press the PLAY/PAUSE/STOP (▶||■) button to enter the REPEAT SUB-MENU. Select the repeat mode required using the SKIP/SEARCH UP (▶▶) or SKIP/SEARCH DOWN (◀◀) buttons and then press the PLAY/PAUSE/STOP (▶||■) button. The options are as follows:




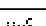
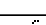


Option	Icon shown in the display	Repeat Mode
Normal	—	All tracks will be played ONCE
Repeat One	↻	The current track will be played continuously
Repeat Folder	↻ ALL	All tracks in the current folder will be played continuously
Repeat All	↻ ALL	All tracks will be played continuously
Random	↻ O	All tracks in the current folder will be played in a random order

To exit the menu, select the "EXIT" option or repeatedly press the MENU button briefly until the normal playback screen is shown.

PRESET EQ

The preset EQ can be used to add sound enhancements to the audio output. To select a preset EQ briefly press the MENU button whilst in MUSIC PLAYBACK MODE to display the MUSIC PLAYBACK MODE MENU. Repeatedly press the SKIP/SEARCH UP (▶▶) or SKIP/SEARCH DOWN (◀◀) buttons until EQUALIZER is shown in the display. Press the PLAY/PAUSE/STOP (▶||/■) button to enter the EQUALIZER SUB-MENU. Select the PRESET EQ mode required using the SKIP/SEARCH UP (▶▶) or SKIP/SEARCH DOWN (◀◀) buttons and then press the PLAY/PAUSE/STOP (▶||/■) button.

The options are as follows:

Option	Icon shown in the display	EQ Mode
Natural		No Preset EQ effects added
Rock		All tracks will be played in Rock equalizer
Pop		All tracks will be played in Pop equalizer
Classic		All tracks will be played in Classic equalizer
Soft		All tracks will be played in Soft equalizer
Jazz		All tracks will be played in Jazz equalizer
DBB		All tracks will be played in DBB equalizer

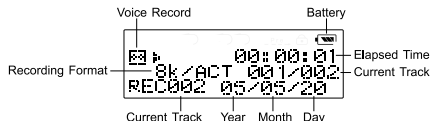
To exit the menu, select the "EXIT" option or repeatedly press the MENU button briefly until the normal playback screen is shown.

Note: Music tracks can only be deleted when connected to a computer.

VOICE RECORD MODE

This mode is used for recording voice files using the internal microphone. These recordings will automatically be stored in the VOICE folder that is inside the RECORD folder in the root directory.

NOTE: TO ACCESS THESE FILES ON A COMPUTER PLEASE ENSURE THAT MASS STORAGE MODE IS THE SELECTED OPTION IN THE "ONLINE DEVICE" OPTION OF THE SYSTEM MENU.



START/STOP/PAUSE RECORDING

To start recording press the PLAY/PAUSE/STOP (▶||■) button.

During recording press the PLAY/PAUSE/STOP (▶||■) button again to pause recording. To resume recording press the PLAY/PAUSE/STOP (▶||■) button again.

To stop recording press and hold the PLAY/PAUSE/STOP (▶||■) until "SAVING..." is shown in the display.

RECORDING QUALITY

The recording quality can be set to four values as shown below. The higher the quality the larger the resulting file will be and therefore the less recording time will be available. The maximum recording time for each mode are as follows (assuming no other files are stored on the unit):

Record Quality	Average storage time on GMP313 (128 MB)	Average storage time on GMP315 (256 MB)	Average storage time on GMP317 (512 MB)
Fine Rec	8.5 hours	17.5 hours	35 hours
Long Rec	35 hours	70 hours	140 hours
Fine Vor	8.5 hours	17.5 hours	35 hours
Long Vor	35 hours	70 hours	140 hours

To change the recording quality briefly press the MENU button, repeatedly press the SKIP/SEARCH UP/DOWN (▶▶/◀◀) buttons to select the "REC TYPE" sub menu and press play to enter. Again using the SKIP/SEARCH UP/DOWN (▶▶/◀◀) buttons select the required recording type and press the play button to confirm.

To exit the menu, select the "EXIT" option or repeatedly press the MENU button briefly until the normal voice record screen is shown.

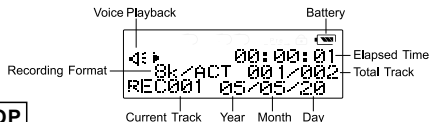
RECORDING TIME

To view the remain time available for recording using the current RECORDING QUALITY setting briefly press the MENU button, repeatedly press the SKIP/SEARCH UP/DOWN (▶▶/◀◀) buttons to select the "REC REMAIN TIME" sub menu and press play to enter. The remaining time will be shown in the display as follows:

Hours remaining Seconds remaining
 Minutes remaining 01:25:43

VOICE PLAYBACK MODE

This mode is used for playback of voice files recorded in VOICE RECORD MODE.



PLAY/PAUSE/STOP

Press the PLAY/PAUSE/STOP button (▶||■) briefly to commence playback.

During playback press the PLAY/PAUSE/STOP button (▶||■) briefly to pause playback.

During playback press and hold the PLAY/PAUSE/STOP button (▶||■) for approximately two seconds.


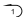

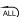
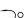
SKIP/SEARCH UP/DOWN

To skip to the next or previous track briefly press the SKIP/SEARCH UP (▶▶) or SKIP/SEARCH DOWN (◀◀) buttons.

To search at high speed for a particular section of a song press and hold the SKIP/SEARCH UP (▶▶) or SKIP/SEARCH DOWN (◀◀) buttons until the desired section is found. To resume normal playback release the button.

REPEAT/RANDOM

Briefly press the MENU button whilst in VOICE PLAYBACK MODE to display the VOICE PLAYBACK MODE MENU. Repeatedly press the SKIP/SEARCH UP (▶▶) or SKIP/SEARCH DOWN (◀◀) buttons until REPEAT is shown in the display. Press the PLAY/PAUSE/STOP (▶||■) button to enter the REPEAT SUB-MENU. Select the repeat mode required using the SKIP/SEARCH UP (▶▶) or SKIP/SEARCH DOWN (◀◀) buttons and then press the PLAY/PAUSE/STOP (▶||■) button. The options are as follows:

Option	Icon shown in the display	Repeat Mode
Normal	—	All tracks will be played ONCE
Repeat One		The current track will be played continuously
Repeat Folder	 	All tracks in the current folder will be played continuously
Repeat All		All tracks will be played continuously
Random		All tracks in the current folder will be played in a random order
Folder	—	All tracks in the folder will be played ONCE

To exit the menu, select the “EXIT” option or repeatedly press the MENU button briefly until the normal playback screen is shown.

Note: Voice files can only be deleted when connected to a computer.

SYSTEM MENU

The system menu is used to set preferences for the player.

MENU OPERATION

To scroll through the available options/menus, press the SKIP/SEARCH UP (▶▶) or SKIP/SEARCH DOWN (◀◀) buttons repeatedly.

To enter a submenu, press the PLAY/PAUSE/STOP (▶■/■) button.

To finalise an option, press the PLAY/PAUSE/STOP (▶■/■) button.

To back up one level briefly press the MENU button.

RECORDTIME

2005-10-20	—	Year-Month-Day
10:29:01	—	Hour:Minute:Second

This option sets the time/date that will be stored in the properties of the recorded voice file.

The time/date can be set by:

Press the VOUME UP (+) button, the year digits will flash.

Press the SKIP/SEARCH UP (▶▶) or SKIP/SEARCH DOWN (◀◀) buttons repeatedly to set the year.

Press the VOLUME UP (+) button, the month digits will flash.

Press the SKIP/SEARCH UP (▶▶) or SKIP/SEARCH DOWN (◀◀) buttons repeatedly to set the month.

Press the VOUME UP (+) button, the day digits will flash.

Press the SKIP/SEARCH UP (▶▶) or SKIP/SEARCH DOWN (◀◀) buttons repeatedly to set the day.

Press the VOUME UP (+) button, the hour digits will flash.

Press the SKIP/SEARCH UP (▶▶) or SKIP/SEARCH DOWN (◀◀) buttons repeatedly to set the hour.

Press the VOUME UP (+) button, the minute digits will flash.

Press the SKIP/SEARCH UP (▶▶) or SKIP/SEARCH DOWN (◀◀) buttons repeatedly to set the minute.

Press the VOUME UP (+) button, the seconds digits will flash.

Press the SKIP/SEARCH UP (►►) or SKIP/SEARCH DOWN (◀◀) buttons repeatedly to set the seconds. Press the VOUME UP (+) button, to store the set time/date in memory.

NOTE: AFTER REPLACING EXHAUSTED BATTERIES THE RECORD TIME WILL NEED TO BE RESET

BACKLIGHT

Set the time that the backlight will remain on after pressing any button. Press the SKIP/SEARCH UP (►►) or SKIP/SEARCH DOWN (◀◀) buttons repeatedly to cycle through the following options:

OFF	The backlight will not come on at all
2 Secs	The backlight will remain on for 2 seconds after a button is pressed
5 Secs	The backlight will remain on for 5 seconds after a button is pressed
10 Secs	The backlight will remain on for 10 seconds after a button is pressed
Permanent on	The backlight will remain on constantly. This option is not recommended as the battery will become exhausted much quicker.

Press the PLAY/PAUSE/STOP (►■/■) button to store the selected value and to return to the SYSTEM MENU.

POWER OFF

Set the period after the last button press that the unit will turn off automatically (player will not turn off during playback or recording, only when the unit is idle.)

Press the SKIP/SEARCH UP (►►) or SKIP/SEARCH DOWN (◀◀) buttons repeatedly to cycle through the following options:

0 Secs	Unit will not automatically turn off
30 Secs	Unit will turn off automatically 30 seconds after the last button was pressed.
60 Secs	Unit will turn off automatically 60 seconds after the last button was pressed.

Press the PLAY/PAUSE/STOP (▶||■) button to store the selected value and to return to the SYSTEM MENU.

CONTRAST

This option allows the contrast of the display to be adjusted.

Press the SKIP/SEARCH UP (▶▶) or SKIP/SEARCH DOWN (◀◀) buttons repeatedly to cycle through the available options.

To store the selected value to memory press the PLAY/PAUSE/STOP (▶||■) button

ONLINE DEVICE

This player can connect to a computer running Windows XP using two methods. Press the SKIP/SEARCH UP (▶▶) or SKIP/SEARCH DOWN (◀◀) buttons repeatedly to cycle through the two options as follows:

Media Device:	To use DRM 10 encrypted files this mode be selected. When connecting to the computer the files are synchronised with those selected on the computer. (For further information on synchronisation please consult the Windows Media Player 10 Help file.)
USB Disc:	When this mode is selected a "removable drive" will be shown in My Computer when the player is connected. This can then used as a standard hard drive and files can just be "Dragged and Dropped" into the removable drive.

Press the PLAY/PAUSE/STOP (▶/■) button to store the selected option and to return to the SYSTEM MENU.

MEMORY INFO

This option will show the total amount of memory available (when empty) and will also show the amount of memory used as a percentage. Press the MENU button briefly to exit and return to the SYSTEM menu.

NOTE: PLEASE NOTE SOME MEMORY IS RESERVED FOR USE BY THE OPERATING SYSTEM FILES.

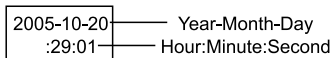
FIRMWARE VERSION

This option will show the version number for the firmware used on the player. Press the MENU button briefly to exit and return to the SYSTEM menu.

DRM TIME

Some DRM 10 encrypted music files are set so that they will expire after a certain period of time. Therefore before downloaded DRM 10 encrypted files please ensure that the clock has been set to the current time. Please note whenever the time is changed the unit will require confirmation that the time should be changed, to confirm the change of time, highlight "YES" using SKIP/SEARCH UP (▶▶) or SKIP/SEARCH DOWN (◀◀) buttons when prompted and press the MENU button to confirm.

NOTE: IF THE CLOCK IS CHANGED BACKWARDS THEN THE LICENSE FOR THE ENCODED FILES WILL BECOME INVALID AND “NO LICENSE” WILL BE SHOWN IN THE DISPLAY WHEN ATTEMPTING TO PLAY THESE FILES. IF THE MESSAGE “REQUEST DRM TIME” IS SHOWN IN THE DISPLAY THEN THE DRM CLOCK HAS NOT BEEN SET.



Press the VOUME UP (+) button, the year digits will flash.

Press the SKIP/SEARCH UP (▶▶) or SKIP/SEARCH DOWN (◀◀) buttons repeatedly to set the year.

Press the VOLUME UP (+) button, the month digits will flash.

Press the SKIP/SEARCH UP (▶▶) or SKIP/SEARCH DOWN (◀◀) buttons repeatedly to set the month.

Press the VOUME UP (+) button, the day digits will flash.

Press the SKIP/SEARCH UP (▶▶) or SKIP/SEARCH DOWN (◀◀) buttons repeatedly to set the day.

Press the VOUME UP (+) button, the hour digits will flash.

Press the SKIP/SEARCH UP (▶▶) or SKIP/SEARCH DOWN (◀◀) buttons repeatedly to set the hour.

Press the VOUME UP (+) button, the minute digits will flash.

Press the SKIP/SEARCH UP (▶▶) or SKIP/SEARCH DOWN (◀◀) buttons repeatedly to set the minute.

Press the VOUME UP (+) button, the seconds digits will flash.

Press the SKIP/SEARCH UP (▶▶) or SKIP/SEARCH DOWN (◀◀) buttons repeatedly to set the seconds.

Press the VOUME UP (+) button, to store the set time/date in memory.

NOTE: AFTER REPLACING EXHAUSTED BATTERIES THE DRM TIME WILL NEED TO BE RESET

Frequently Asked Questions

1.Why does the player skip certain tracks?

The player will only play MP3 and WMA files.

2.Why will player not play music encoded with DRM10?

DRM10 encrypted files are only compatible on Windows XP and Windows Media Player 10 only. For example, if your computer is running Windows 2000 and Windows Media Player 9, it's necessary to upgrade to Windows XP and Windows Media Player 10.

3.Why does “Request DRM Time” appear on the LCD screen?

In synchronization, your player is needed to be operated with a powered battery. Also, weak or flat battery must be replaced in 30 minutes. Otherwise, the DRM clock will revert back to the Default time and you will need to adjust the clock to the current time for playback.

4.Why can I not synchronize DRM protected WMA files, even though I am using Windows XP and Windows Media Player 10?

Ensure that the "ONLINE DEVICE" option in the "SYSTEM MENU" is set to "MEDIA DEVICE".

5.Why are some files / tracks corrupted when transferred to the player?

Transfer may have been interrupted. Do not disconnect the player whilst transferring files.

6.Can I jog with the player?

This player is not susceptible to shocks as a personal CD player is, therefore any shock (within reason) to the unit should not make the music skip

TROUBLESHOOTING GUIDE

Before contacting the helpline please check the below troubleshooting guide to see if your problem is solved here.

Fault	Possible Cause	Action
No power	Battery not inserted	Insert battery observing polarity markings
	Battery inserted incorrectly	Remove and re-insert battery observing polarity markings
	Battery exhausted	Replace with new battery.
No sound	Earphones not connected	Connect Earphones
	Volume turned down	Gradually increase the volume until sound is heard
Buttons do not function	Key lock is engaged	Check HOLD switch is in position away from "HOLD"
Display shows "Request DRM Time" and will not play tracks	Downloaded file is DRM 10 encrypted	Set the "DRM TIME" in the "SYSTEM MENU" to the current time
		Check with content provider for any specific instructions for using their service.
Display shows "NO LICENSE" and will not play tracks	License file for the selected tracks has expired	Contact content provider for instructions on updating license files.
Player will not record any more voice clips	There is no more space for recordings	Make enough space by removing files already stored on the player.

General Specifications

Memory	128MB(GMP313)
	256MB(GMP315)
	512MB(GMP317)
Battery	1 AAA size Alkaline battery
LCD	128x32 dot with blue back light
Dimension	85x32x21mm
S/N radio	90dB
Headphone Output	9mWx 2@32Ω
Frequency range	20Hz-20KHz
Sample Frequency of the Recording	8KHz
File type	MP3 / WMA
Voice Recording / Length	AG8 / 36 hrs (128M)
WMA Bit Rate	32 Kbps - 384 Kbps
MP3 Bit Rate	8 Kbps - 448 Kbps