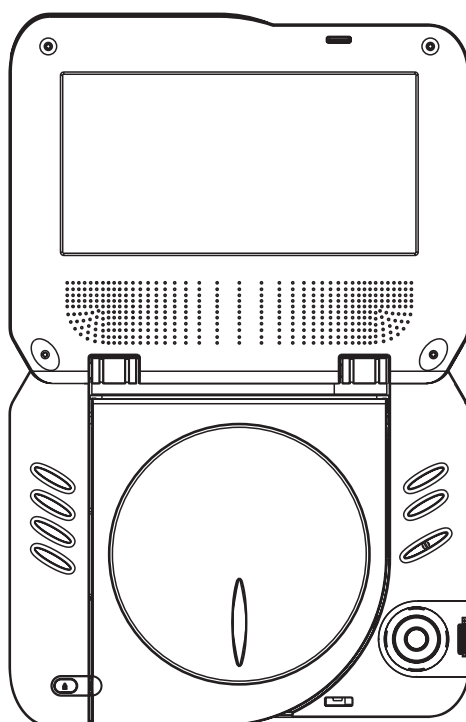


Goodmans

Operating Manual

PORTABLE LCD DVD PLAYER

Model: GCE71W6DVDTW



READ THESE INSTRUCTIONS INCLUDED IN THIS IM THOROUGHLY PRIOR TO CONNECTING AND OPERATING.
PLEASE RETAIN THIS MANUAL IN CASE YOU MAY NEED IT FOR FUTURE REFERENCE.
THE ILLUSTRATIONS & GRAPHICS HEREIN ARE FOR REFERENCE ONLY AND SUBJECT TO CHANGE WITHOUT NOTICE.

TABLE OF CONTENTS

| | |
|---|------|
| TABLE OF CONTENTS..... | 1 |
| WHAT'S IN THE BOX..... | 1 |
| OVERVIEW OF THE DVD PLAYER | 2 |
| BATTERY INSTALLATION..... | 3 |
| USING THE AC ADAPTOR..... | 4 |
| BASIC CONNECTION..... | 5 |
| OPERATIONS..... | 6 |
| get started | |
| adjust the volume | |
| skip ahead or back | |
| rapid advance/reverse | |
| stop playback | |
| on screen display information | |
| changing audio soundtrack language (DVD/VCD disc) | |
| changing subtitle language (DVD only) | |
| enjoying video CDs with PBC feature | |
| KODAK Picture CD/JPEG CD playback | |
| KODAK Picture CD/JPEG CD operations | |
| INITIAL SETTINGS..... | 7 |
| common procedures for initial settings | |
| system setup | |
| language setup | |
| video setup | |
| speaker setup | |
| DISC HANDLING PRECAUTIONS..... | 8 |
| TROUBLESHOOTING..... | 8 |
| CAUTIONARY NOTES..... | 9-10 |
| INSTALLATION OF THE PORTABLE DVD PLAYER IN A VEHICLE..... | 11 |

WHAT'S IN THE BOX

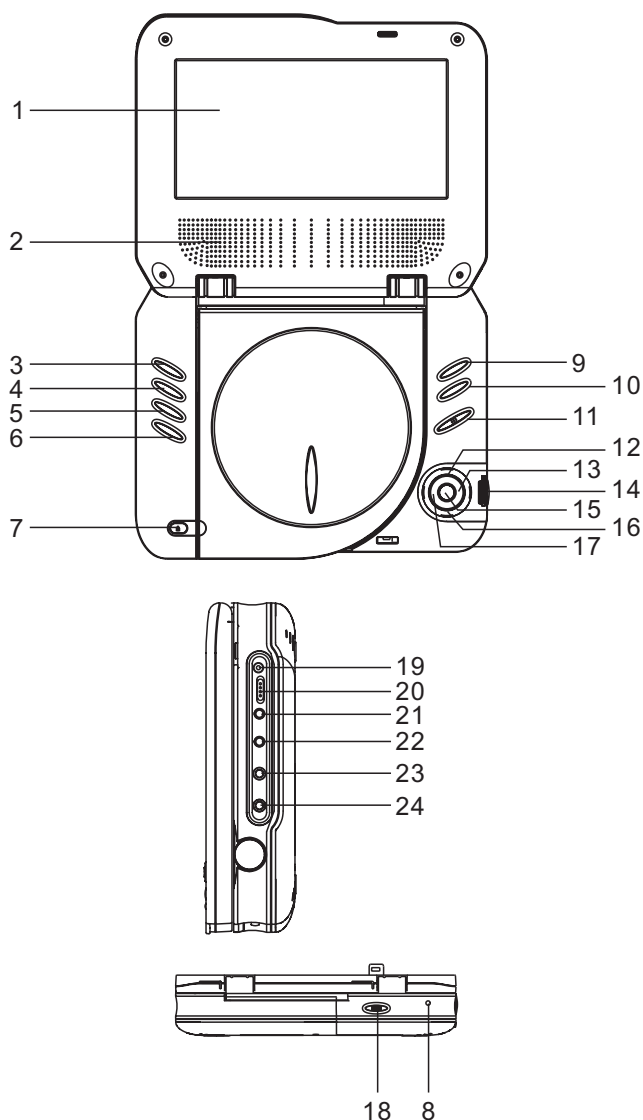
On unpacking the unit the following should be located within the packing.

- 1 x GCE71W6DVDTW main unit
- 1 x Earphone
- 1 x Car splitter adaptor
- 2 x Cigarette lighter plug
- 1 x Audio/video cable
- 1 x AC Adaptor
- 1 x Carry bag
- 1 x Instruction Manual
- 1 x Slave screen
- 1 x Slave screen connector

Please retain all packaging materials as in the event of the product needing transportation or return for service these will be needed.

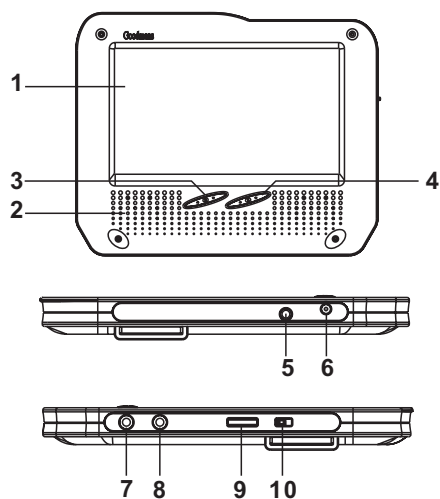
OVERVIEW OF THE DVD PLAYER

MAIN UNIT



1. TFT SCREEN
2. SPEAKERS
3. LCD BUTTON
4. AUDIO BUTTON
5. TITLE BUTTON
6. SUBTITLE BUTTON
7. DISC COVER OPEN KEY
8. CHARGE INDICATOR
9. MENU BUTTON
10. SETUP BUTTON
11. NEXT/PREVIOUS BUTTONS
12. INFO/UP BUTTON
13. F.FWD BUTTON
14. VOLUME CONTROL
15. PLAY/PAUSE/SELECT BUTTON
16. NAVIGATION DOWN/STOP BUTTON
17. F.BWD BUTTON
18. OPEN BUTTON
19. DC 9V/12V INPUT SOCKET
20. POWER ON/OFF SWITCH
21. AUDIO/VIDEO IN SOCKET
22. AUDIO/VIDEO OUT SOCKET
23. PHONES 2
24. PHONES 1

SLAVE SCREEN

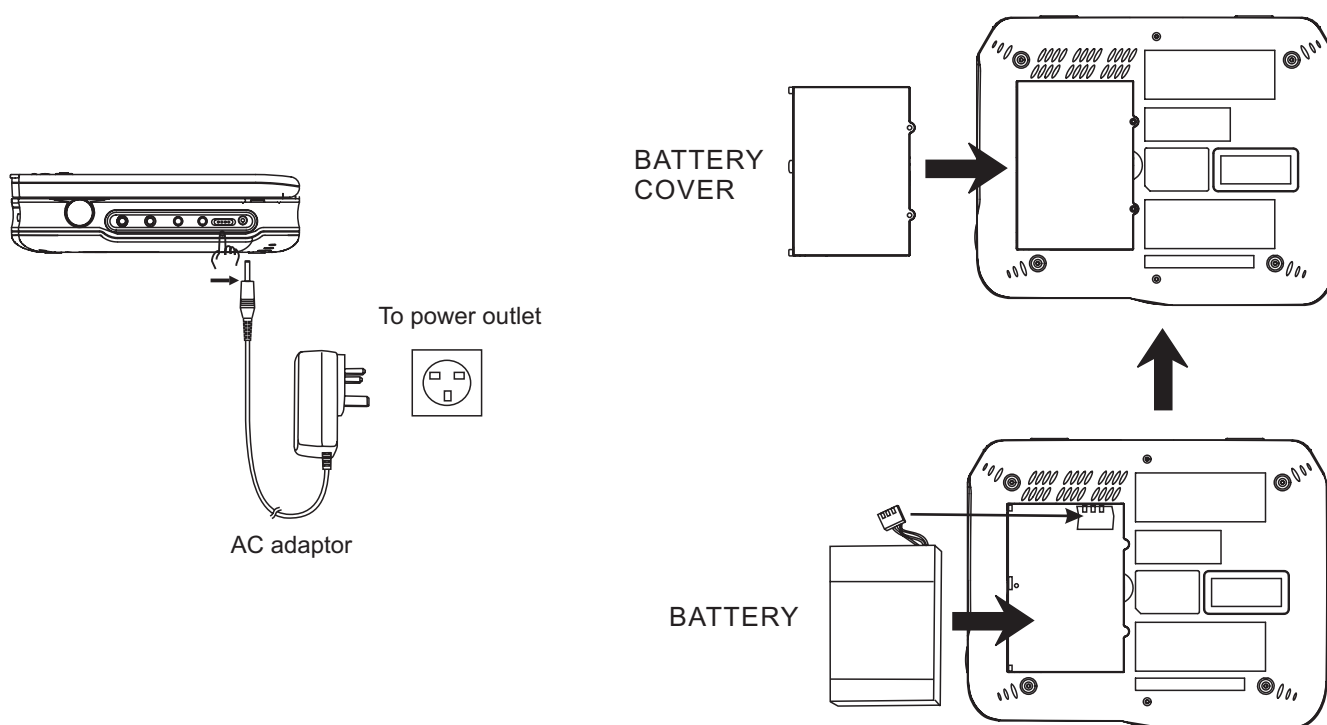


1. TFT SCREEN
2. SPEAKERS
3. BRIGHTNESS BUTTONS
4. CONTRAST BUTTONS
5. AV IN SOCKET
6. DC IN SOCKET
7. PHONES 1
8. PHONES 2
9. VOL +/- BUTTON
10. POWER ON/OFF SWITCH

RECHARGING THE BATTERY

IMPORTANT: When first time using fully charge the internal rechargeable battery before use. Connect the ac adaptor to the DC input socket located on the side of the player ensuring that the power switch on the player is set to its OFF position as the battery will not charge when the player is switched on. The red charge indicator on the front panel will flash and continue to flash whilst the battery is charging. When the Red indicator stops flashing and remains illuminated the battery is fully charged. Disconnect the ac adaptor power from the player and move the power switch to its ON position. Install a disc and follow the on screen information to play the disc.

BATTERY REPLACEMENT: In the unlikely event that the internally fitted battery becomes faulty or due to its age no longer charges properly. A new battery can be purchased please call 0871 230 0790 and quote the model number of this player. To replace the internally fitted rechargeable battery remove the 2 fixing screws as shown, slide the battery cover off. Pull / unplug the battery connections and replace the battery ensuring that the battery connections are properly remade. Fit the cover and replace the fixing screws. You must now fully recharge the battery before use.

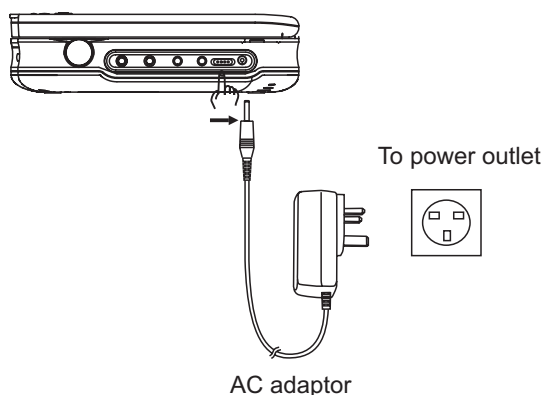


NOTE:

This unit works either on the battery pack supplied or the AC power: unplug the AC Power adaptor from the DC input jack to work on the battery pack (after fully charged); plugging the AC Power adaptor while the battery pack is attached initiates the charging of this battery, the charge LED indicator lights up red, during charging, the LED indicator will flash. When the battery is fully charged the indicator will steady on red. Fully charging a run-out battery pack may take 5 hours or longer. A fully charged battery pack can endure approximately 2.5 hours of continuous DVD playback. This playing time may vary with the surrounding environment, the volume level of the speaker and the battery condition. It is advised that you wait 10-20 minutes before recharging the battery pack if it has turned flat during operation.

USING THE AC ADAPTOR

Always turn off the DVD player via the Power on/off Key prior to connecting or disconnecting the AC ADAPTOR. Be sure to use the supplied AC adaptor. Using a different type of adaptor may cause malfunction or damage to the product. When the AC adaptor is used for prolonged periods of time, it may heat up. This is normal and is not a cause for concern. When not using the adaptor, unplug it from the wall outlet. Keep the AC adaptor free from moisture, cold, and dust. Otherwise, a risk of fire or electric shock may be resulted in.

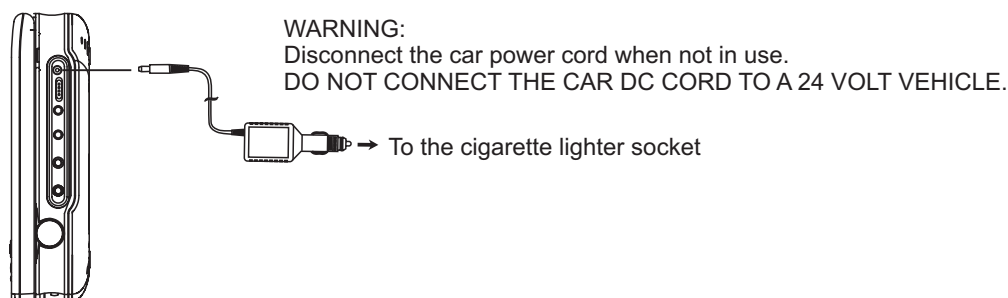


WARNINGS:

Only use the AC adaptor supplied with this player.
Be sure to unwind the AC adaptor cable (DC output cable) before using, as electromagnetic interference may cause problems with other devices.
Always turn off the DVD player when inserting or removing the AC adaptor.
Before storing the battery pack, make sure it is completely drained.
Be sure to recharge the battery at least once every six months to ensure proper battery life.

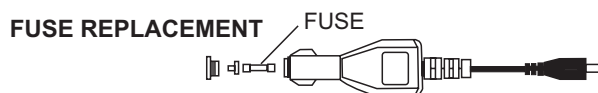
CONNECTING TO A CAR ADAPTOR

The 9V/12V car power adaptor is designed for use with vehicles that have a 12V, negative ground electrical system.



CAUTIONS:

- Use the unit only with 9V/12V car power adaptor, use with other car power adaptor could damage the unit.
- The recommended 9V/12V car power adaptor is for use with this unit only. Do not use it with other equipment.
- In the interests of road traffic safety, do not operate the unit or view video software while driving a vehicle.
- Make sure the unit is fastened securely to prevent from moving outside of the vehicle in an accident
- When the inside of the cigarette lighter socket is dirty with ashes or dust, the plug section may become hot due to poor contact. Be sure to clean the cigarette lighter socket before use.
- After use, disconnect the 9V/12V car power adaptor from both the unit and cigarette lighter socket.



A BRIEF DESCRIPTION ON HOW TO REPLACE THE FUSE

1. Twist off the cover of the car adaptor
2. Take out the damaged fuse and replace it by using a new one.
3. Insert the new fuse into the socket of the car adaptor.
4. Finally twist on the cover of the car adaptor.

Note: The value of the fuse is quick blow 2.5A 125V (20mm).

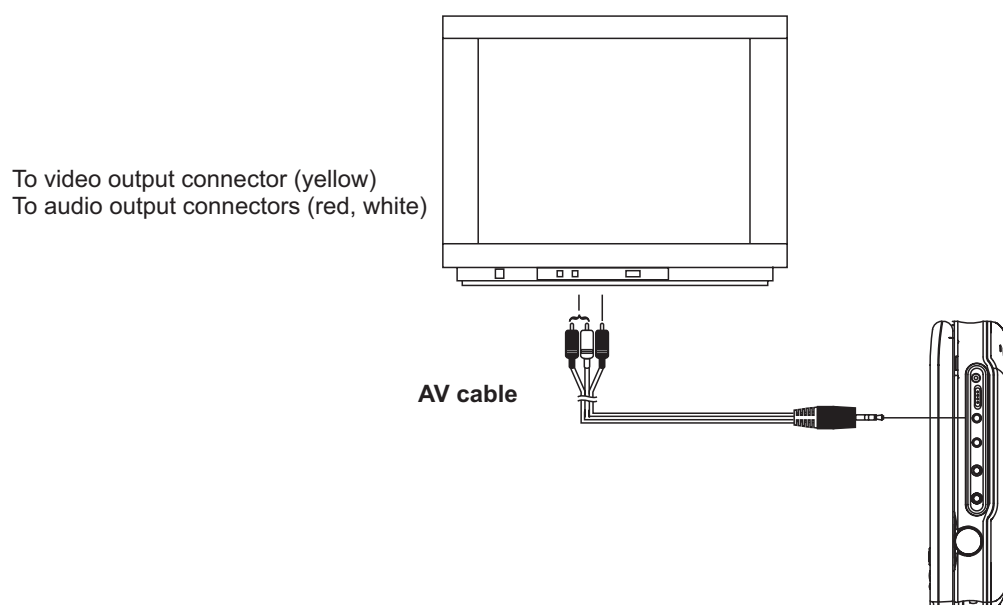
BASIC CONNECTION

- It is recommended to connect a multi-system TV.
- Ensure that this player and other equipment to be connected are set to the standby mode or off and disconnect the AC power cords before commencing connection.
- Do not block ventilation holes of any of the equipment and arrange them so that air can circulate freely.
- Read through the instructions before connecting other equipment.
- Ensure that you observe the color coding when connecting audio and video cables.

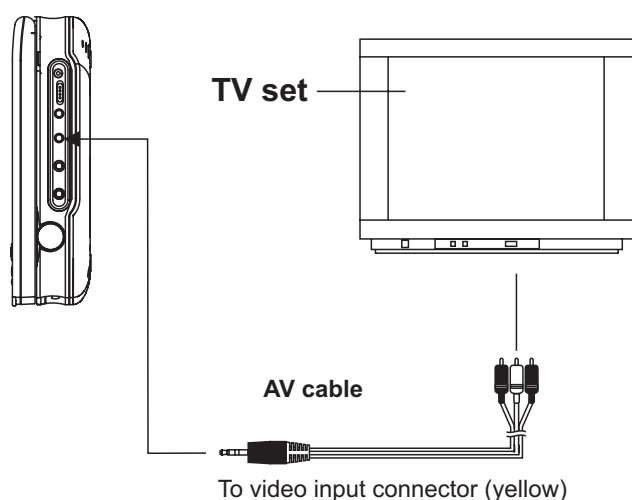
Note:

- During DVD play, the TV volume may be at a lower level than during TV broadcasts, etc. If this is the case, adjust the volume to the desired level.
- If the DVD/VCD/CD player is connected to the TV through a video cassette recorder, the picture may not be played back normally with some DVDs. If this is the case, do not connect the player via the VCR.

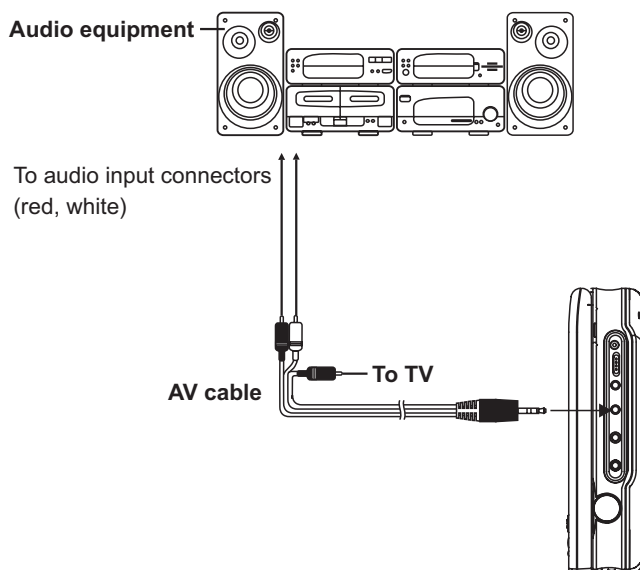
Connecting a video equipment to Line-in jack



Connecting to a TV set



Connecting to audio equipment



OPERATIONS

GET STARTED

1. Slide POWER switch to ON position to turn on the player.
2. Press CD cover Open to open the disc tray.
3. Place a disc onto the disc tray.
4. Close the disc tray and the playback starts automatically.
5. When a menu screen appears on the screen, move the navigation buttons to select a preferred track number, then press PLAY/PAUSE button to start playback.

ADJUST THE VOLUME

Rotating the VOLUME control to increase or reduce the volume.

SKIP AHEAD OR BACK

Press PREVIOUS or NEXT button once during play to skip a chapter(DVD) or a track (Video CD/CD) ahead or backwards.

RAPID ADVANCE/ REVERSE

During playback, press F.FWD button or F.BWD button several times to scan the disc forward or backward at X2, X4, X8, X20 normal speed.

Press PLAY/PAUSE button to resume normal play.

STOP PLAYBACK

Press navigation DOWN button during playback to stop playback; the player activates its resume function when STOP is pressed in STOP mode; press PLAY button again, playback resumes at the point it stopped previously; open the disc tray or press the STOP button one more time to clear the resume function.

ON SCREEN DISPLAY INFORMATION

When the player is in operation, press INFO/UP button continuously, the screen will display parts of information(current disc type, title number, chapter number, playtime, audio language, audio type, subtitle language and multi angle, etc) in a sequence.

CHANGING AUDIO SOUNDTRACK LANGUAGE (DVD/VCD DISC)

It is possible to change the audio soundtrack language to a different language from the one selected at the initial settings(This operation works only with discs on which multiple audio soundtrack languages are recorded).

Press AUDIO button during DVD disc play, the sound track language changes with the current sound track number shown on the TV screen.

Pressing AUDIO button during VCD disc play will change audio output mode: MONO L, MONO R and stereo.

NOTE: When no soundtrack languages are recorded, pressing this button will not work.

CHANGING SUBTITLE LANGUAGE (DVD ONLY)

Press SUBTITLE button during playback, the subtitle language shown on the screen will change as a response to each press;

When the desired language appears, release the button to view the subtitle in that language.

Note: this function only works on the DVDs recorded with multi-language subtitles.

ENJOYING VIDEO CDS WITH PBC FEATURE

After loading a VCD 2.0/1.0 with PBC, the screen shows the Disc formats and then a menu.

Select desired track by Pressing NEXT and PREV button to select track directly.

During playback, press MENU button to return main menu(DVD).press this button to select PBC ON/OFF mode(VCD)

TITLE button: Play the title (DVD)

LCD button - Press LCD button once to enter the color adjustment mode and use the navigation buttons to adjust the color intensity;

Press LCD button twice to enter the brightness adjustment mode and use the navigation buttons to adjust the brightness.

Press this button three times to enter the contrast adjustment mode and use the navigation buttons to adjust the contrast values.

Press this button four times to enter the panel adjustment mode and use the navigation buttons to select between two options(panel 16:9 and panel 4:3)

KODAK PICTURE CD / JPEG CD PLAYBACK

Slide show of Kodak Picture CD after being loaded begins automatically;

Folders of JPEG picture CD after being loaded are displayed on the screen; use the navigation buttons to select the desired folder and then press PLAY/PAUSE button to confirm.

The files in this folder are displayed and you can select your favourable pictures using the up/down navigation buttons and press PLAY/PAUSE button to start playback.

Preview of the picture will be displayed while you scroll across the filenames.

KODAK PICTURE CD/JPEG CD OPERATIONS

1.PICTURE ROTATIONS

Press RIGHT and LEFT navigation buttons to rotate the picture Clockwise and anti-clockwise respectively.

2. PICTURE FLIPS

Press UP navigation button to display the current track and total tracks on the screen.

Press DOWN navigation button to return to the root directory.

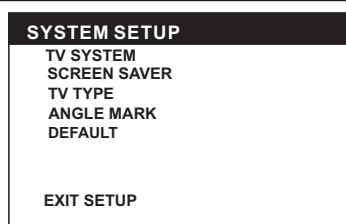
INITIAL SETTINGS

Initial settings page is for you to make your preferred settings up for your player. Once the initial settings are done they are retained in the CPU of the player until otherwise modified.

COMMON PROCEDURES FOR INITIAL SETTINGS

1. Press SETUP button.
2. Use the navigation buttons to select the item you want to modify, press PLAY/PAUSE/SELECT button to confirm, setting page with further setting items displayed shows on the TV screen. Again use navigation buttons to make changes. Press again PLAY/PAUSE/SELECT button to confirm modifications.
3. Use navigation buttons to switch to another setting on the main setting page.
4. Press SETUP button to exit main setting page.

1. SYSTEM SETUP



1.1 TV SYSTEM - it is used to select the TV mode.

Options: **NTSC / PAL / AUTO**

Please select this option as per your TV set.

1.2 SCREEN SAVER - when the player is not in used for 3 minutes, a running DVD logo will move across the TV screen to protect the TV CRT.

Options: On: Screen saver is enabled

Off: Screen saver is disabled

1.3 TV TYPE- it is used to select the TV scan mode, please set as per your TV set.

Options: **4:3PS** : Normal Pan & scan mode

4:3LB : normal Letter box mode

16:9 : 16:9 wide screen mode

1.4 ANGLE MARK - it is used to select whether or not the multi-angle icon is display on the screen when a multi-angle DVD disc is playing.

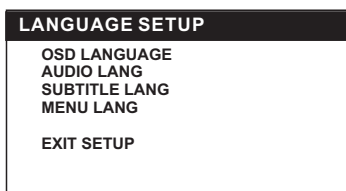
Options: On: Icon will be displayed

Off: Icon will be turned off

1.5 DEFAULT - Reset to factory settings.

Options: **RESTORE**

2. LANGUAGE SETUP



2.1 OSD LANGUAGE - It is used to select different On Screen Display language for different user.

Options: **ENGLISH**

(The number of these options depends on the customer's need.)

2.2 AUDIO LANG - select preferred audio language.(DVD only, need disc software support)

Options: **ENGLISH/GERMAN/SPANISH/FRENCH/PORTUGUESE/ITALIAN**

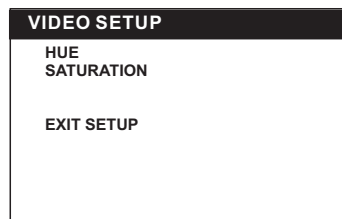
2.3 SUBTITLE LANG- Select preferred subtitle language. (DVD only, need disc software support)

Options: **ENGLISH/GERMAN/SPANISH/FRENCH/PORTUGUESE/ITALIAN/OFF**

2.4 MENU LANG - Select preferred disc menu language. (DVD only, need disc software support)

Options: **ENGLISH/GERMAN/SPANISH/FRENCH/PORTUGUESE/ITALIAN**

3. VIDEO SETUP



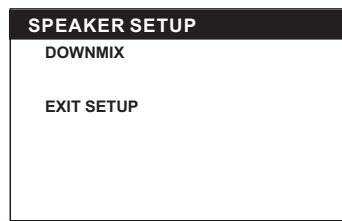
3.1 HUE--to set the colour impression for display.

Options: -6/-4/-2/0/+2/+4/+6

3.2 SATURATION--to set the saturation level for display.

Options: 0/2/4/6/8/10/12

4. SPEAKER SETUP

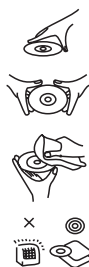


4.1 DOWNMIX

Options: **LT/RT**- Left/Right mix mode

STEREO- Select this option if you don't have a 5.1 channels amplifier.

DISC HANDLING PRECAUTIONS



- Hold the disc by the edge so the surface will not be soiled with finger prints. Finger prints, dirt and scratches can cause skipping and distortion.
- Do not write on the label side with a ball-point pen or other writing utensils.
- Do not apply benzine, thinner, and liquid that prevents against static electricity.
- Be careful not to drop or bend the disc.
- Instal only one disc on the disc tray.
- Do not try to close the disc tray when the disc is not in stalled properly.
- Be sure to store the disc in it's case when not in use.

TROUBLESHOOTING

If your DVD player does not seem to be functioning properly, check the items below before you contact an authorized service center

| Symptom | Check |
|---|---|
| Power does not turn on or suddenly turns off. | <ul style="list-style-type: none"> • Make sure the AC adaptor is securely plugged into an AC outlet. • Turn the power off and then back on. |
| Battery pack is in place but the power does not turn on or suddenly turns off | <ul style="list-style-type: none"> • Check that the battery pack is charged. If not, recharge it. |
| No picture or sound | <ul style="list-style-type: none"> • Check that the A/V cables are securely connected. • Check that the disc is a DVD (region number 2), DVD-RW, VIDEO CD or AUDIO CD. • Do not use a disc that has scratches or dirt. • Check that the label-side of the disc is facing up. • The pick-up lens of the DVD player may be dirty. Contact the service center for lens cleaning. • Check that the TV channel is set to VIDEO or AV if viewing with a TV. |
| No picture | <ul style="list-style-type: none"> • Check that the LCD display is turned on. |
| No sound | <ul style="list-style-type: none"> • Check that the display panel is open. If it is closed, audio will not be output to the speakers. • Check the volume setting. If set to zero, turn up volume level. • Check that the headphones are plugged into the PHONES socket. Speakers cannot be used with the headphones. |
| No picture and sound | <ul style="list-style-type: none"> • Check that the battery is properly installed and AC Adaptor is properly connected. |
| Distorted video or sound | <ul style="list-style-type: none"> • Use a disc without scratches or dents. |

Cautionary Notes

When Moving the Player

- Be sure to remove the disc from the player before packing for moving.
It is recommended that you also remove the disc from the player and turn off the power when not using the player.

Saving Power

- It is recommended that you turn off the power to the DVD player when not in use.
If you are not going to use it for prolonged period of time, unplug the power cord from the wall outlet.

Maintenance of LCD Screen

- To keep the screen clean, turn off the power and then wipe with a soft cloth.

About LCD Screen

- This LCD panel is designed with the latest technology, ensuring 99.99% of active pixels.

Cautions on Using Battery pack

Danger!

Always follow the safety information below when using the battery pack. Otherwise, a short circuit, overheating, smoke, fire, or damage to the product may result.

1. Never disassemble or modify the battery pack in any way. Do not touch the terminal of the battery pack with a metal object.
2. Do not let any metal object inside the battery pack.
3. Do not place the battery pack in direct sunlight, dashboard of a vehicle, or high temperature.
4. Do not expose the battery pack to water, fire, or heat.
5. Always use the included AC adaptor when charging the battery pack.
6. This battery pack is designed exclusively for your portable DVD player. Do not use it with other devices.

Warning!

1. Do not drop or subject to strong vibration.
2. Keep out of reach of children.
3. The battery pack may leak fluid that is harmful to your eyes.
If this fluid gets in your eyes, wash eyes immediately with large amounts of running water and get medical attention at once.
If the fluid gets on your skin or clothing, wash immediately with water.

Caution!

1. When not using the battery pack, remove it and store in a cool place.
2. Do not use the AC adaptor or battery pack for a prolonged period of time during recharging. You might burn the battery.
3. Keep the battery pack free from smoke, steam, moisture, and dust.
 - Do not place the battery pack near a kitchen, heater, or any other place where there is smoke or steam.
Doing so may result in fire or electric shock.
 - Avoid direct sunlight, heater, or high temperature place. etc, inside of a car. It can cause explosion or fire.
Doing so may cause a short circuit, overheating, smoke, fire, or damage to the product.
4. Using the battery pack under 10°C or over 30°C can cause reduced battery life.

Cautionary Notes

Cautions on Storing Battery pack

- Even when not in use, power is consumed continuously. To reduce the power consumption, follow the procedure below.
- 1. Remove the battery pack from the DVD player after every use.
- 2. When not using the DVD player, turn off the power. If the player is left in the standby mode, power will be slowly drained from the battery pack and the charging capacity will decrease.
- 3. Before storing the battery pack, completely drain the power by operating the player and store in a cool, dry place. If stored in a hot place, the capacity of the battery pack will decrease.
- 4. The battery pack must be recharged and then used on the DVD player at least once every 6 months. This helps to prevent the loss of capacity.

AC Adaptor

The supplied AC adaptor is compatible with 50/60Hz electrical system (110V~240V range).

Use of the AC adaptor depends on the specific voltage requirements and electrical outlet design.

- Using the AC adaptor near a radio may cause poor reception.
- Do not let any type of flammables, liquid, or metal objects in the adaptor.
- The adaptor is covered with an outer plastic sheath. Do not peel open the sheath.
- Do not drop, jar, or shake the adaptor.
- Do not place in direct sunlight.
- Do not use in high temperature or cold and humid environments.

Cleaning and Maintenance

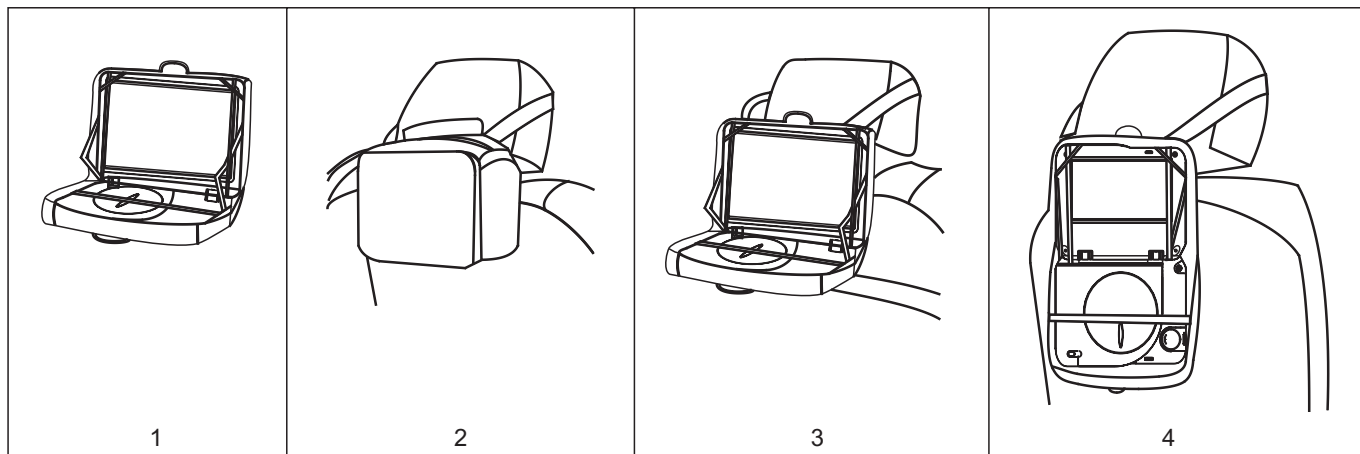
- Many plastic parts are used in this DVD player casing. Do not use volatile chemicals such as benzene or thinner. This might damage the finish.
- Wipe the casing with a soft, dry cloth. For excessive dirt, use a cloth dampened in a diluted neutral detergent. and wipe again with a soft, dry cloth.
- Wipe off fingerprints or dirt on the LCD screen using a soft, dry cloth.

CAUTION

- To avoid electric shock, this unit must not be exposed to dripping water or water splash.
- Minimum distances around the apparatus for sufficient ventilation.
- The ventilation should not be impeded by covering the ventilation openings with items, such as newspapers, table-cloths, curtains, etc.
- No naked flame sources, such as lighted candles, should be placed on the apparatus.
- The use of apparatus in tropical and/or moderate climates.
- Before scrapping the appliance, remove the batteries and place them in the appropriate battery collection container.

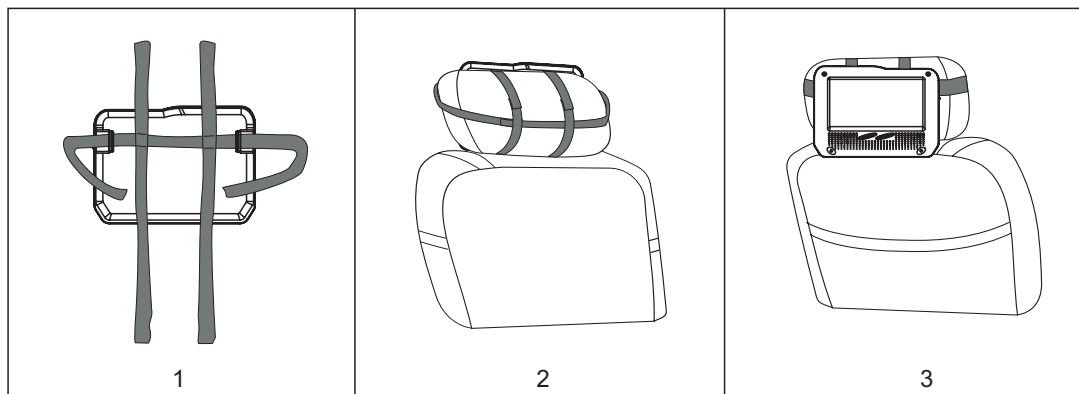
INSTALLATION OF THE PORTABLE DVD PLAYER IN A VEHICLE

CARRYING CASE MOUNTING INSTRUCTIONS



1. Pack your portable DVD player into carrying case then secure their positions.
2. Close the carrying case and its zippers. Wrap the strap around the head rest on the front seat.
3. Unzip the zipper then open the case gently.
4. You may choose to flatten your portable DVD player as shown to conserve space.

SLAVE SCREEN MOUNTING INSTRUCTIONS



1. Thread the Headrest Strap to the back of the Slave screen .
2. Wrap the strap around the head rest on the front seat.
3. Make sure that the Slave screen is now attached reasonably securely to the vehicle's headrest.

CONNECTING TO THE SECOND SCREEN

This unit is equipped with second screen, the connecting method is illustrated as below using the in car adaptor.

