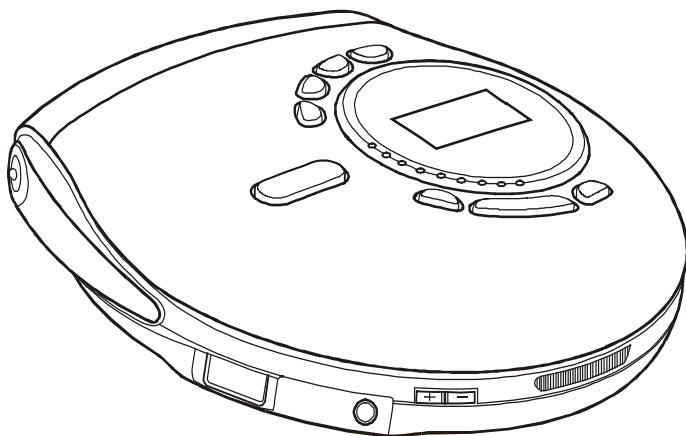


# Goodmans

## Compact Disc Player with WMA and MP3

GCD7128MP3R

### Instruction Manual



#### Performance Note

Whilst this unit has been designed to provide the best possible anti shock protection when on the move, it cannot provide completely uninterrupted playback whilst running or Jogging.

#### SPECIFICATIONS

Programme Play.....	Up to 24 tracks
Line output.....	0.6V RMS
Earphone output.....	15mW
Power requirement.....	DC 4.5V external and battery 3V ( "AA" Cell x 2) (IEC R6. JIS SUM-3 or NI-MH rechargeable battery)
Dimension.....	130(W) x 28(H) x 140(D) mm
Weight.....	Approx 180g not including battery (Main Unit)

For improvement purposed, specification and design are subject to change without notice.

Goodmans Product Information Helpline 0870 873 0080

052GCD7128MP3R45

#### IMPORTANT NOTES

Your hearing is very important to you and to us so please take care when operating this equipment. It is strongly recommended that you follow the listed guidelines in order to prevent possible damage or loss of hearing:

#### ESTABLISH A SAFE SOUND LEVEL

- Over time your hearing will adapt to continuous loud sounds and will give the impression that the volume has in fact been reduced. What seems normal to you may in fact be harmful. To guard against this BEFORE YOUR HEARING ADAPTS set the volume at a low level.
- Slowly increase the level until you can hear comfortably and clearly and without distortion.
- Damage to your hearing is accumulative and is irreversible.
- Any ringing or discomfort in the ears indicates that the volume is too loud.

Once you have established a comfortable listening level, **DO NOT INCREASE THE SOUND LEVEL FURTHER.**

The following list of typical sound levels may assist you in recognizing just how loud you have set the volume level.

#### DECIBEL

Level dB	Example
30dB	Quiet Library, soft whispers
40	Living room, fridge freezer bedroom away from traffic.
50	Normal conversation, quiet office, light traffic.
60	Electric sewing machine.
70	Vacuum cleaner, hair dryer, noisy restaurant.

#### THE FOLLOWING NOISES CAN BE HARMFUL UNDER CONSTANT EXPOSURE

80dB	Average city traffic, alarm clock buzzer at 2 feet, food mixer.
90dB	Motorcycle, heavy goods vehicle, petrol lawn mower.
100	Pneumatic drill, chain saw, garbage truck, discotec / night - club.
120	Rock band concert, thunderclap.

#### PERMANENT LOSS OF HEARING

140	THRESHOLD OF PAIN Gunshot 2 feet away.
180	Rocket Launching pad.

## IMPORTANT NOTES

1. This product does not contain a separate Power On / Off switch. After inserting a disc and installing batteries / AC adaptor, simply press the Play button to switch on and play a disc.
2. In order to maximise battery life and provide optimum playing time this product incorporates an Auto Power Off function. The power to the player will automatically switch off approximately 60 Seconds after a disc has finished playing or when the CD lid is opened.
3. The ESP function is automatically engaged. When playback starts for more information. Please refer to section 12 of these instructions.

## TABLE OF CONTENTS

Location of Controls.....	1
Power Supply.....	2
Earphones Control.....	3
CD Play.....	4
Features.....	5
MP3-CD/WMA-CD Playback.....	6

Player Operation (see reverse of this sheet)

MP3/WMA-Flash Playback.....	7
USB Stick(storage)Playback.....	8
Encoding(Recording)Audio CD to Flash and USB Stick.....	9
Delete MP3/WMA Files From USB and Flash.....	10
Win98 Driver Installation.....	11
Troubleshooting.....	12
Product Specifications.....	13

## WARNING

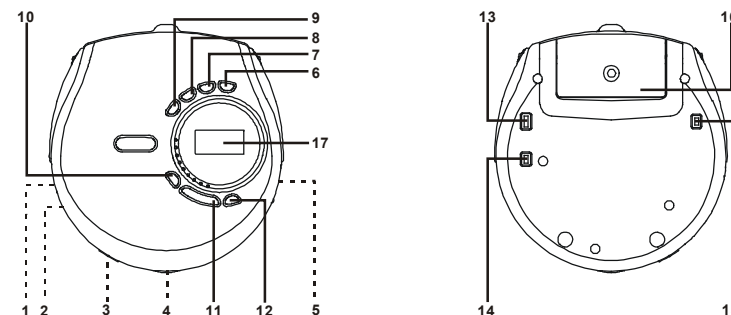
To prevent fire or shock hazard, do not expose the unit to rain or moisture.

To avoid electrical shock, do not open the cabinet. Refer servicing to qualified personnel only.

## SAFETY PRECAUTIONS

1. As the laser beam used in this compact disc player is harmful to the eyes, do not attempt to disassemble the casing.
2. Stop operation immediately if any liquid or solid object should fall into the cabinet. Unplug the unit and have it checked by qualified personnel.
3. Do not touch the lens or poke at it. If you do, you may damage the lens and the player may not operate properly.
4. Do not put anything in the safety slot. If you do, the laser diode will be ON when the lid is still opened.
5. If the unit is not to be used for a long period of time, make sure that all power sources are disconnected from the unit. Remove all batteries from the battery compartment, and unplug the AC adaptor from the wall outlet. Make it a practice to remove the AC adaptor by grasping the main body and not by pulling the cord.
6. The unit employs a laser. The use of controls or adjustments or performance of procedures other than those specified herein may result in exposure to hazardous radiation.

## 1. LOCATION OF CONTROLS



- |                         |  |
|-------------------------|--|
| 1. USB SOCKET           | Socket for USB STICK   |
| 2. PHONE SOCKET         | 3.5mm phone socket   |
| 3. VOLUME               | Adjusts the volume   |
| 4. OPEN SWITCH          | Opens the CD lid   |
| 5. DC INPUT SOCKET      | Socket for 4.5V external power supply  |
| 6. ESP/MENU/REC         | MP3: select the file search function by MENU.<br>CD: Anti-Shock Protection on/off<br>USB/FLASH: Record audio signal to FLASH or USB. |
| 7. MODE/ CLEAR          | Selects the different playing possibilities; REPEAT1/ ALL/DIR.,<br>INTRO, RANDOM   |
| 8. PROGRAM/EQ/ENTER     | Selects the program mode or enters the program,<br>Choose equalizer setting  |
| 9. SKIP+/SEARCH         | Skip or fast search tracks forward, and MP3/WMA file<br>SEARCH-RIGHT   |
| 10. SKIP-/SEARCH        | Skip or fast search tracks backward, and MP3/WMA file<br>SEARCH-LEFT   |
| 11. PLAY/PAUSE/UP       | Turns the player on, starts and interrupts CD play, and MP3/WMA<br>file SEARCH-UP  |
| 12. STOP/DOWN           | Stops CD play, erases a program and turns the player off, and<br>MP3/WMA file SEARCH-DOWN  |
| 13. CD USB FLASH SWITCH | CD/USB/FLASH SELECT SWITCH   |
| 14. RECHARGE SWITCH     |  |
| 15. HOLD SWITCH         | Key lock on/off switch   |
| 16. BATTERY COMPARTMENT | Install Battery (inside CD door)   |
| 17. DISPLAY WINDOW      | LCD function display   |

### CAUTION

Use of controls or adjustments or performance of procedures other than herein may result in hazardous laser exposure.

## 2. POWER SOURCES

### Batteries (not supplied)

Inserting batteries


1. Open the battery compartment and insert 2 “AA” alkaline batteries. Follow the polarity as indicated in the battery compartment.

Notes:

- Old and new or different types of battery combinations should not be used.
- Remove batteries if they are low or if the unit will not be used for a long time.

**Batteries contain chemical substance so they should be disposed of properly.**

### Indication of low battery power

- A flashing “” indication appears on the display when the batteries need to be changed. Replace them or connect the AC power adapter (Supplied).

Notes: The average playing time of batteries under normal condition.

Playing Battery type	ESP on	ESP off
CD / Normal	6 hours	8 hours
CD / Alkaline	16 hours	18 hours
MP3 / Normal	8 hours	N/A
MP3 / Alkaline	20 hours	N/A

### AC Operation

1. Insert the DC plug, at the end of the AC adaptor cord into the DC input socket, at the side of the unit.
2. Plug the AC adaptor into a 230V AC power outlet socket.

Notes: If the AC plug of this unit does not fit in your AC outlet, a plug adaptor Should be used. Consult your local dealer on the type of plug adaptor required.

## 3. USING EARPHONES

### Connecting the earphones

- Connect the earphones into the PHONE (GREEN) socket on the side of the player.

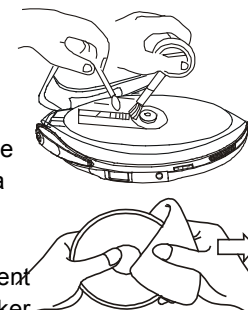
## 3. USING EARPHONES

### Important safety notes when using earphone

- Hearing safety: Do not listen at high volume. Hearing experts advise against continuous extended play. If you experience a ringing in your ears, reduce the volume or discontinue use.
- Traffic safety: Do not use while operating a motorised vehicle. It may create a traffic hazard and it's illegal in areas. You should use extreme caution or temporarily discontinue use in potentially hazardous situations. Even if your headset is an open-air type designed to let you hear outside sounds, don't turn up the volume so high that you can't hear what's around you.

### CD player and CD handling

- Do not touch the lens of the player.
- Do not expose the set, batteries or CDs to humidity, rain, sand or excessive heat (caused by heating equipment or direct sunlight).
- Clean the CD player with a soft, slightly dampened lint-free cloth. Do not use any cleaning agents as they may have a corrosive effect.
- To clean the CD, wipe it in a straight line from the centre toward the edge using a soft, lint-free cloth. A cleaning agent may damage the disc! Never write on a CD or attach a sticker to it.
- Playing is not possible when the lens may cloud over when the set is moved suddenly from cold to warm surroundings. Leave the CD player in a warm environment until the moisture evaporates.
- Active mobile phones in the vicinity of the CD player may cause malfunctions.
- Avoid dropping the set as this may cause damage.



## 4. CD PLAYBACK

### Playing a CD

This CD player plays **Audio CDs**, **MP3 CDs** and WMA CDs such as CDRs and CDRWs. Do not try to play a Cdi, CDV or computer CD or DVD.

- 1 Slide the OPEN slider towards the right and the lid opens. The "Door-Open" indicator will appear in LCD.

## 4. CD PLAYBACK

- 2 Insert an audio CD, MP3-CD or WMA CD printed side up, by pressing gently on the CD centre so that it fits onto the hub. Close the lid by pressing down on the left side.
- 3 Slide CD, USB, FLASH switch to the "CD" position.
- 4 Press the PLAY/PAUSE button to turn the set on and the start playback. The current track number and the elapsed playing time are displayed. It will take approx. 5 seconds for a CD to begin playback.
  - To interrupt playback press the PLAY/PAUSE button. The elapsed time flashes.
  - Continue playback by pressing the PLAY/PAUSE button again.
- 5 Press the STOP button to stop playback. The total number of tracks and the total playing time of the CD are shown in the display.
- 6 Press the STOP button again to turn the set off.
- 7 To remove the CD, hold it by its edge and press the hub gently while lifting the CD.
  - When the unit is turned on, the "ESP" function is active automatically. "ESP" is displayed. If the ESP function is not required, press the ESP button to turn it off.

### Playback information

- If a CD Rewritable (CD Recordable) is not recorded properly (finalized). "Disc Error" is displayed.
- For CD Audio, use FINALIZE on your CD recorder to complete the recording.
- Playback will stop if you open the CD lid.
- While the CD is being read, "Reading Disc" is displayed.
- If there is no activity for 10 seconds, the set will clear the display, If there is no activity after another 50 seconds, the set will turn off automatically to save battery power. Any settings such as program and playing modes will be kept.

### Volume and sound adjustment

- Adjust the volume level up to 32 steps by using the Volume up/down buttons.



## 4. CD PLAYBACK

### Preset Equalizer

- While a CD is playing, press the PROG./ EQ button to cycle through the EQ setting (NORMAL, CLASSIC, POP, JAZZ, ROCK, BASS AND U-BASS).

## 5. PLAY MODES

### Selecting a track and searching

#### Selecting a track during playback

- Briefly press +SKIP / SEARCH or -SKIP / SEARCH button once or several times to skip to the current, previous or subsequent track start. Playback continues with the selected track.

#### Selecting a track when playback is stopped

- 1 Briefly press +SKIP / SEARCH or -SKIP / SEARCH button once or several times. The selected track number is displayed.
- 2 Press the PLAY / PAUSE button to start CD play. The playback starts with the selected track.

#### Searching for a passage during playback

1. Press and hold +SKIP / SEARCH or -SKIP / SEARCH button to find a particular passage in a backward or forward direction. Search starts and playback continues at a low volume. After 2 seconds the search speeds up.
2. Release the button when you reach the desired passage. Normal playback continues from this point.

### Programming track numbers ( CD Only )

You can select up to 24 tracks and store them in the memory in a desired sequence. You can store any track more than once.

1. While the unit is stopped, press the PROG. button. PROGRAMME and " 01,02 and 03 " are displayed.
2. Press ENTER button. The programme list will be displayed on the screen.
3. Select a track with SKIP+/- button.
  - Press the ENT.(ENTER) button once to store the desired track.
4. Select and store additional desired tracks by repeating 2 to 3.
5. Press the MENU. button after stored programming tracks.
6. Press the PLAY button to start playback of your selected tracks.
  - You can review the programme by pressing the PROG. button when playback is stopped.

## 5. PLAY MODES

### Erasing the programme

When in STOP MODE press the MODE/CLEAR button for 3 seconds to clear the programme. The programme will also be erased if you change the CD. The programme will be kept even though you turn power off if the same CD stays in the tray.

#### ESP

This player incorporates the latest digital anti shock circuit, which prevents interruption of the sound output if the unit is subject to shock or vibration during disc playback. The anti shock system will automatically start when a disc is played. To turn off this function off press the ESP button.

Note: When playing MP3 tracks, the display will read "Welcome CD/MP3/WMA". The ESP feature will not appear but is automatically activated regardless of the ESP switch setting.

#### Selecting different playing options – MODE

It is possible to play tracks in random order, to repeat a track or the CD and to play the first few seconds of each track.

- Press MODE during playback once or repeatedly until the display shows either:
  - REPEAT 1** : The current track is played repeatedly. "1" is displayed.
  - REPEAT ALL**: The entire CD is played repeatedly. "A" is displayed.
  - REPEAT "D"**: The current directory is played repeatedly. "D" is displayed. (MP3 only).
  - "Intro"**: The first 10 seconds of each of the remaining tracks are played in sequence. "I" is displayed.
  - RANDOM**: All tracks of the CD are played in random order until all of them have been played once. "R" is displayed.
- Press play in the selected mode to begin.
- To return to normal playback, press play MODE until the mode feature display "N" is displayed.

## 6. MP3-CD/WMA-CD PLAYBACK

### To play MP3-CDs and WMA CDs

#### IMPORTANT INFORMATION

- Use mp3 and WMA as the file extension when creating audio files onto CDR-R/Ws. Do not use any other extensions such as doc, txt, pdf, etc., when creating audio files into MP3/WMA format.
  - Do not use the .MP3/WMA extension for text or other non-audio data files. This may result in serious malfunction of the set and harmful noise interference.
  - Single session means only one session created on the CDR-R/W.
  - File Directory**: this is the players display abbreviation for "album or folder". On a PC display, an album is shown as **Folder** in Window Explorer.
  - Do not attempt to combine CD audio and MP3/WMA tracks within a CDR-R/W, the unit will only be able to playback the CD audio tracks from a CD with mixed formats.**
- Place a MP3/WMA CDR-R/W with the label side up and push the CD centre lightly to set it in position.
  - Press the PLAY/PAUSE button to start playback "welcome MP3/WMA" number of directions and the number of tracks show on the display. Please note reading an MP3/WMA CD will take 10 to 30 seconds depending on quantity of files to be read.
  - Press STOP button to stop playback. Playback stops and the display shows the total number of tracks and total number of directories/folders.

#### Selecting and searching a track/album

The following table shows the different functions available when playing Audio CD or MP3/WMA CDs.

- Single file** is displayed when playing an MP3/WMA CD with only a root directory which contains no additional albums (folders).
- With albums** means a MP3/WMA CD with more than one album (folders), and is shown by directory and a number on the display, as AL 09, AL 10, etc.

Function	CD audio	MP3/WMA	MP3/WMA (with multiple Files)
Track select	V	V	V
Music search	V	V	V
Fast track select		V	V
Fast album select			V

## 6. MP3-CD/WMA-CD PLAYBACK

### Track select

To select the next or previous track.

- Press the +SKIP / SEARCH button or -SKIP / SEARCH button once or repeatedly during playback.  
Playback is interrupted and starts from the beginning of the selected track.

### Music search

To fast search only within a CD Audio track.

- During playback, press and hold down the +SKIP / SEARCH button or -SKIP / SEARCH button. Release button at the desired passage.

### File search function for MP3/WMA CD with "MENU" button

To navigate directly "FILE NAME " or "ALBUM SELECT "and "FILE SELECT" with menu button.

### FILE NAME SEARCH

For example; rock. MP3/WMA (file name)

1. Press the MENU button once, The display shows "ABCDEFGHijkl" and the cursor is flashing.
2. Press the direction (DOWN) button, Display shows "MNOPQRSTUVWXYZ" and the cursor is flashing.
3. Select the "R" letter with the direction (RIGHT/LEFT) button, Cursor begins flashing on "R"
4. Press the ENT button.

Auto playback occurs after searching and finding the "rock. MP3/WMA" file. If there are more than 2 files beginning with the same letter. it will show the first file name flashing. At that time, select the desired file name with Direction (RIGHT/LEFT) button and than press the ENT. button.

### Note :

Any MP3/WMA files, i.e. file name containing symbols (examples: \*,/,-,!,=,etc) are recognized and can be used for file name search. In this case, select the "special Mark" on display.

### ALBUM / FILE SELECT

1. Press the MENU button twice ALBUM name and the file name appears on the screen.
2. Select the desired ALBUM name with DIRECTION button (LEFT/RIGHT) or FILE name with the DIRECTION button (UP/DOWN).

## 6. MP3-CD/WMA-CD PLAYBACK

3. Press the ENTER button. The selected track will play automatically.

### Track Programming

1. Programmes can only be set in the stop mode, press the PROG. button, The "PROGRAM" and " 001, 002 and 003 " is displayed.
2. Press ENTER button. The program list will be displayed on the screen.
3. Select the ALBUM with DIRECTION (LEFT/RIGHT) button.
4. Select the file with the DIRECTION (UP/DOWN) button.
5. Press the ENTER button.
  - Select and store all desired files by repeating steps 2 to 5.
6. Press the MENU Button after stored programming tracks.
7. Press the PLAY button to start playback of your selected tracks.

### ERASING THE PROGRAMME

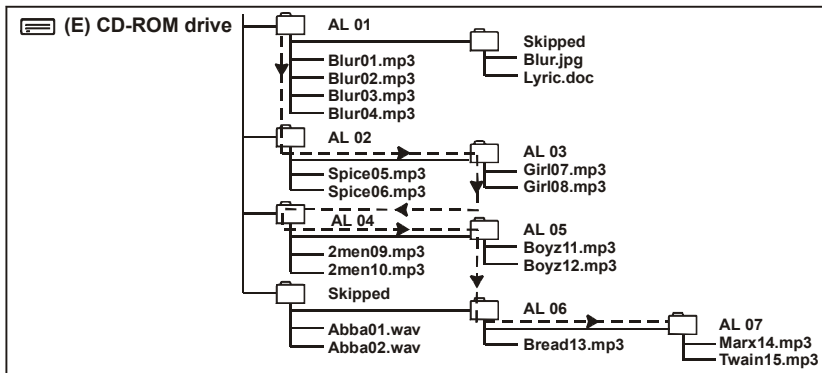
At stop mode press the "MODE/CLEAR" button for 3 seconds to clear the programme. The programme will be also erased if you change the CD. The program will be stored even if the power is switched off providing the same CD stays in the player.

### Single session / Multi session

- The following chart is an example of a **Windows Explorer** display for a single session MP3/WMA CDR-R/W disc. Check the added Notes to help you understand the MP3/WMA CD unit display, the playback sequence of albums and tracks on single session MP3/WMA CDs.
- Multi-session - Computer user does not need to finalize the CDR-R/W disc when the music is down-loaded from the internet. The music can be downloaded at different times until the whole disc is fully loaded.



## 6. MP3-CD/WMA-CD PLAYBACK



Notes: → Arrow pathway show the sequence of MP3/WMA album and track playback.

**AL01-AL07** This CD ROM example has a total number of 7 MP3/WMA albums (folders).

Blur01.MP3/WMA-Twain15.MP3/WMA This CD ROM example has a total number of 15 tracks, where '01' is the first track and '15' is the last track.

**Skipped** indicates an album which contains non-audio files such as: jpg, wav, doc. etc. These cannot be detected nor played on the MP3/WMA-CD player, When an album contains mixed format files, the non-MP3/WMA files will be skipped.

### MP3/WMA Properties

### Standard

MPEG rate : 32 ~ 384Kbps  
Sampling Frequency : 8-48KHz  
MPEG 1/2/2.5 : Layer 2/3  
MP3/WMA playback : ISO9660 format compatible  
Maximum file support: Album (Directory) 99, File (Track) 300

\* Support for "Multi session and Packet write."

File properties function on the computer will show this information.

## 7. MP3/WMA-FLASH PLAYBACK

### IMPORTANT NIFORMATION

\* Only use mp3 or WMA as file extension when creating audio files on to FLASH.

\* The FLASH that has non-MP3/WMA files can not be played back.

1. Slide CD, USB, FLASH switch to the "FLASH" position.
2. Refer to the MP3-CD/WMA-CD PLAYBACK section for the ALBUM/FILE SELECT AND TRACK PROGRAMMING operations.
3. USB socket cable can be connected with PC.
4. MP3/WMA. FILE can be downloaded to FLASH from a PC.

## 8. MP3-WMA-USB STICK (STORAGE) PLAYBACK

### IMPORTANT INFORMATION

\* Only use mp3 or WMA as file extension when sending audio files to a USB STICK.

\* A USB STICK that has non-MP3/WMA files can not be played back.

1. Slide CD, USB, FLASH switch to the "USB" position.
2. Insert USB STICK to the "USB" socket.
3. Refer to the MP3-CD/WMA-CD PLAYBACK section for the ALBUM/FILE SELECT AND TRACK PROGRAMMING operations.

### FORMAT WARNING:

All the data stored in your FLASH or USB memory (even memory is protected) will be erased once you press "ENTER" after you select "FORMAT" at the "MENU" mode. "ENTER" "FORMAT" only if you want to erase the stored data in your FLASH at USB memory.

## 9. ENCODING (RECORDING) AUDIO CD TO FLASH AND USB STICK

This unit has an WMA Encoding function. You can encode music from your Audio CD to your FLASH and USB stick in WMA format. First play the CD track you want to encode. Once you enter to the encode mode encoding will automatically start from the beginning of the track and automatically stop at the end of the track.

1. To set the Encoding mode, Press "REC" button for 2 seconds during the playback.
2. If both USB and FLASH are inserted the display will indicate

Select target disk  
FLASH USB

3. Select the target disk by DIRECTION (LEFT/RIGHT) button and press ENTER key. The display will indicate

Encode to FLASH  
YES NO

or

Encode to USB  
YES NO

## 9. ENCODING (RECORDING) AUDIO CD TO FLASH AND USB STICK

Select YES to encode and press ENTER key to confirm.

Note: If only USB (or FLASH is inserted) the display will indicate as above.

If you want to cancel the encoding, Press ESP/MENU/REC button.

4. Encoding will automatically start from the beginning of the track.

5. The encoding will automatically stop at the end of the track.

To stop the encoding manually press the "STOP" button.

Note: Only the STOP button is activated when encoding. There is no access to the other buttons during encoding.

If CD door is opened playback will stop and the encoding will not be saved.

### COPY MP3/WMA FILE TO USB AND FLASH

This unit can copy an MP3 file in the MP3 CD, USB or FLASH to USB FLASH.

First playback the mp3 file to copy. Enter the copy mode. Music will stop and the MP3 data will be copied from the beginning of the file to the target USB or SD/MMC. Once the file copy is finished unit will stop.

### COPY MP3/WMA file from MP3/WMA CD to USB or FLASH.

1. To set the copy mode, Press "REC" button for 2 seconds during the playback.

2. If both USB and FLASH are inserted the display will indicate

Select target disk  
FLASH    USB

3. Select the target disk by DIRECTION (LEFT/RIGHT) button and press ENTER key. The display will indicate

Copy to USB  
YES    NO

or

Copy to FLASH  
YES    NO

Select YES by DIRECTION (LEFT/RIGHT) button and press the ENTER key.

Note: If you insert only USB (or FLASH) the display will indicate as above.

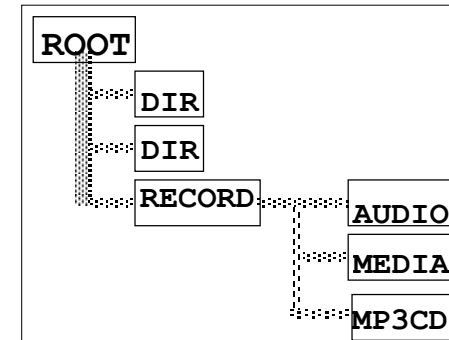
## 9. ENCODING (RECORDING) AUDIO CD TO FLASH AND USB STICK

4. The copy will automatically stop at the end of the file. To stop manually press STOP button.

COPY MP3/WMA FILE FROM USB TO FLASH

You can also copy MP3/WMA file in the USB to FLASH/USB).

First playback the MP3/WMA file you want to copy. Then follow the above steps 2 and 3.



(5) System folder for recording

When USB or FLASH is detected, It creates 3 system folders if the given disk doesn't have them.

"MEDIA": Directory for MP3/WMA copy between USB to FLASH and FLASH to USB.

File name: MEDIAxxx.MP3/WMA (xxx: 0 ~ 999)

"AUDIO": Directory for Audio recording from Audio CD to USB [FLASH]

File name: AUDIOxxx.MP3/WMA (xxx: 0 ~ 999)

"MP3/CD": Directory for MP3/WMA copy between from MP3/WMA CD to USB [FLASH]

File name: MP3/WMACDxxx.MP3/WMA (xxx: 0~ 999)

## 10. DELETE MP3/WMA FILES FROM USB AND FLASH

You can delete MP3/WMA file from your USB and FLASH.

First select USB or FLASH which includes the file to delete.

1. Press ESP/MENU/REC button twice to enter Navigation mode and select the target file you want to delete.

2. Press ESP/MENU/REC button for 2 seconds, the display shows "Delete xxxxxx (target file name)".

3. Select yes or no and press ENTER. Selecting YES, will delete the selected file.



## 10. DELETE MP3/WMA FILES FROM USB AND FLASH

4. If ESP/MENU/REC is pressed for 2 seconds, the display will show "Delete sub-files?"
5. Select yes or no and press ENTER. It will delete all the files in the selected directory.

### FORMAT USB AND FLASH

You can format USB and FLASH. First select USB or FLASH mode.

1. Press ESP/MENU/REC button. The display mode will cycle from Normal, file search, Navigation, Format, and Normal.

4. Press the button 3 times to select Format. The display will show "USB (FLASH)"  
FORMAT ok?

3. Press ENTER to format.

Caution: Format will delete all the files you have in your USB or FLASH.

4. Press ESP/MENU/REC button to return to normal mode.

Caution: -If you remove the USB/FLASH before FORMAT is completed, a serious problem on the USB/FLASH may occur and may cause an unrecoverable error.

## 11.Win98 Driver Installation

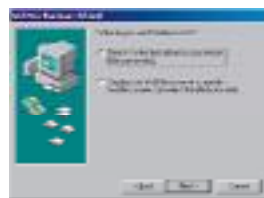
\*NOTE: This unit requires drivers to be installed for Windows 98 and Windows 98SE, please Insert the Driver CD and then connect your player to the USB port. At that time, It will be Detected " New Hardware Found " on your PC . And follow the on screen instruction as sequence;



1st STEP



5th STEP



2nd STEP



3rd STEP



4th STEP

## 12. TROUBLESHOOTING

### WARNING

*Under no circumstances should a repair to the player be attempted as this will void the warranty.*

If a fault occurs, check the following hints.

If this does not solve the problem please call our product information helpline.

Symptom	Symptom	Possible Solution
No power	<b>Batteries</b>	
	Are the batteries inserted correctly?	Insert the batteries correctly.
	Are the batteries dead?	Replace batteries.
Playback is impossible or stops during CD playback	Is the power adapter connected properly?	Connect the power adapter properly.
	Is the CD door closed properly?	Close the CD door tightly.
	Is there condensation on the lens?	Wait until the lens has cleared.
	Is the CD inserted properly?	Place the CD with the label side up.
	Is the CD scratched or damaged?	Use another CD.

If using an MP3 CD burned from a computer, there could have been transfer errors during the process. This is an error between computer and CD. This is not an error with the Player

## 12. TROUBLESHOOTING

Symptom	Symptom	Possible Solution
<b>Playback does not start from first track</b>	Is the RESUME or PROGRAMME function activated?	Switch off the RESUME function or clear the PROGRAMME.
	Are connection plugs inserted properly?	Check all connections.
<b>No sound or poor sound quality</b>	Is the volume set too low?	Adjust the volume.
	Is the headphone plug dirty?	Clean the headphone plug.
	Is the set located near strong magnetic fields?	Move the set away from strong magnetized fields.
	Is the temperature too high/low?	Let the set adjust to the temperature.

Note: If you do not find an error and the disc is not reading properly, simply power-off the player completely, wait 5 seconds and re-power (turn on) the unit.

*Features and specifications subject to change without notice.*

## 13. PRODUCT SPECIFICATIONS

### PICK-UP

System	Compact disc digital audio system
Laser diode	Material: GaAlAs
Properties	Wavelength : $\lambda = 780\text{nm}$ Emission duration : continuous Laser output : $<44.6 \mu\text{W}$
Error correction	Cross-interleave Reed-solomon code

### AUDIO

D/A conversion	1-bit DAC 8 times oversampling
Frequency response	20-20,000Hz (+1/-3 dB)
Wow and flutter	Below measurable limits
No. of channels	2 channels (stereo)
Output level	Line output : 0.6 Vrms (47 K $\Omega$ ) Earphone " 15 mW (32 $\Omega$ )

### GENERAL

Power requirements	- 2 x LR6 "AA" size alkaline battery - DC in 4.5V socket accepts AC power adaptor (centre positive)
Power consumption	0.8W (DC 4.5V) UNDER NORMAL CONDITION
Dimension	Approx. 130 (W) x 28 (H) x 140 (D) mm
Weight	Approx. 180g not including battery (Main Unit)