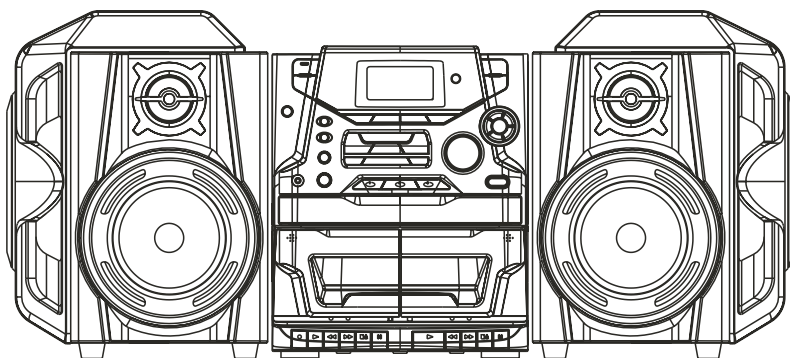


Goodmans

INSTRUCTION MANUAL

STEREO HI-FI MUSIC SYSTEM WITH REMOTE CONTROL

4225MP3



CONNECTING TO MAINS SUPPLY

This appliance may be fitted with a non-rewireable plug. If it is necessary to change the fuse in a non-rewireable plug the fuse cover must be refitted. If the fuse cover is lost or damaged, the plug must not be used until a replacement available from the appliance manufacturer is obtained. It is important that the colour of the replacement fuse cover corresponds with the colour marking on the base of the plug. If the plug has to be changed because it is not suitable for your socket, or becomes damaged, it should be cut off and an appropriate plug fitted following the wiring instructions below. The plug removed must be disposed of safely as insertion into a 13A socket is likely to cause an electrical hazard.

For your own safety read the following instructions carefully before attempting to connect this unit to the mains.

MAINS (AC) OPERATION

This unit is designed to operate on 230 V, 50 Hz current only. Connecting it to other power sources may damage the unit

The wires in this mains lead are coloured in accordance with the following code :

BLUE = NEUTRAL BROWN = LIVE

IMPORTANT

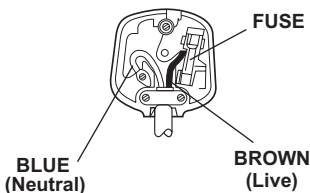
As the colours of the wires in the mains lead of this appliance may not correspond with the coloured markings identifying the terminals in your plug, proceed as follows:-

The wire which is coloured blue must be connected to the terminal which is marked with the letter N or coloured black.

The wire which is coloured brown must be connected to the terminal which is marked with the letter L or coloured red.

No connection is to be made to the earth terminal of the plug.

If a 13 Amp (BS 1363) Plug is used, a 3 Amp Fuse must be fitted, or if any other type of Plug is used a 3 Amp Fuse must be fitted, either in the Plug , or on the Distribution Board.



CAUTION

To prevent electric shock disconnect from the mains before removing cover. No user serviceable parts inside. Refer servicing to qualified service personnel.

SAFETY PRECAUTION

Do not allow this unit to be exposed to rain or moisture.

Mains Supply: 230 Volts 50 Hz - AC only.



This symbol means that this unit is double insulated. An earth connection is not required.

CAUTION

CLASS 1 LASER PRODUCT

Use of Controls or adjustments or performance of procedures other than those specified herein may result hazardous radiation exposure.

LASER SAFETY



This unit employs a laser, only quality service personnel should attempt repair.

DANGER: INVISIBLE LASER RADIATION WHEN OPEN AND INTERLOCK FAILED OR DEFEATED. AVOID DIRECT EXPOSURE TO BEAM.

CAUTION: HAZARDOUS LASER RADIATION WHEN OPEN AND INTERLOCK DEFEATED.

CAUTION

CLEANING: Always disconnect unit from mains supply before attempting to clean it. Use soft cloth moistened with soapy water, wipe gently. Do not use solvents or abrasive materials.

MAINTENANCE AND CARE

Electronic products of this kind should never be subjected to extreme temperatures or high humidity. For instance, this set should not be placed in bathing areas or around stoves and radiators.

If necessary, clean the unit with a piece of cloth dampened with water only (Be sure the AC Power Cord is disconnected from the Mains). Never use a polish or a strong detergent as this will damage the finish of the cabinet.

This equipment has been designed and manufactured to meet the highest international standards, but, like any electrical apparatus which is operated at mains voltage, care must be taken if you are to obtain the best results and safety is to be assured. This is particularly important with audio equipment.

DO. . . Read the operating instructions before you attempt to use the equipment.

DO. . . Ensure that all electrical connections (including the mains plug, extension leads and interconnections between pieces of equipment) are properly made and in accordance with the manufacturer's instructions. Check that the mains fuse rating is correct.

DO. . . Always consult your dealer if you are ever in doubt about the installation, operation or safety of your equipment. He is the best person to advise you.

DON'T. . . Obstruct the necessary all-round ventilation - especially DON'T stand the set close to curtains or on soft furnishing such as carpets. Overheating can cause unnecessary damage and shorten the life of the set.

Remember that to obtain the best performance and lasting satisfaction from your equipment, have it regularly maintained by a reliable service organization. Ensure that it is correctly used by all the family.

ABOVE ALL. . .

Never let children push anything into holes or slots in the case - this could result in an electric shock; Never guess or take chances with electrical equipment of any kind - it is better to be safe than sorry!

IMPORTANT NOTES

Hearing is very important to you and to us so please take care when operating this equipment. It is strongly recommended that you follow the listed guidelines in order to prevent possible damage or loss of hearing.

ESTABLISH A SAFE SOUND LEVEL

Over time your hearing will adapt to continuous loud sounds and will give the impression that the volume has in fact been reduced. What seems normal to you may in fact be harmful. To guard against this **BEFORE YOUR HEARING ADAPTS** set the volume at a low level.

Slowly increase the level until you can hear comfortably and clearly and without distortion.

Damage to your hearing is accumulative and is irreversible.

Any ringing or discomfort in the ears indicates that the volume is too loud.

Remember listening for prolonged period of time at high volume levels will harm your hearing.

Once you have established a comfortable listening level, DO NOT INCREASE THE SOUND LEVEL FURTHER.

The following list of typical sound levels may assist you in recognising just how loud you have set the volume level.

DECIBEL

Level (dB)

Example

30dB	Quiet library, soft whisper.
40	Living room, fridge, freezer, bedroom away from traffic.
50	Normal conversation, quiet office, light traffic.
60	Electric sewing machine.
70	Vacuum cleaner, hair dryer, noisy restaurant.

THE FOLLOWING NOISE CAN BE HARMFUL UNDER CONSTANT EXPOSURE

80dB	Average city traffic, alarm clock buzzer at 2 feet, food mixer.
90dB	Motorcycle, heavy goods vehicle, petrol lawn mower.
100	Pneumatic drill, chain saw, garbage truck, discotheque / night-club.
120	Rock band concert, thunderclap, fast train passing by.

PERMANENT LOSS OF HEARING

140	THRESHOLD OF PAIN Gunshot 2 feet away, jet plane taking off.
180	Rocket Launching pad.

TABLE OF CONTENTS

This instruction manual is important to you. Please read it carefully. This manual tells exactly how to connect, operate and adjust this unit for best performance. It shows simple things to do and check before you call for help and saves the cost of unnecessary service and call out charges.

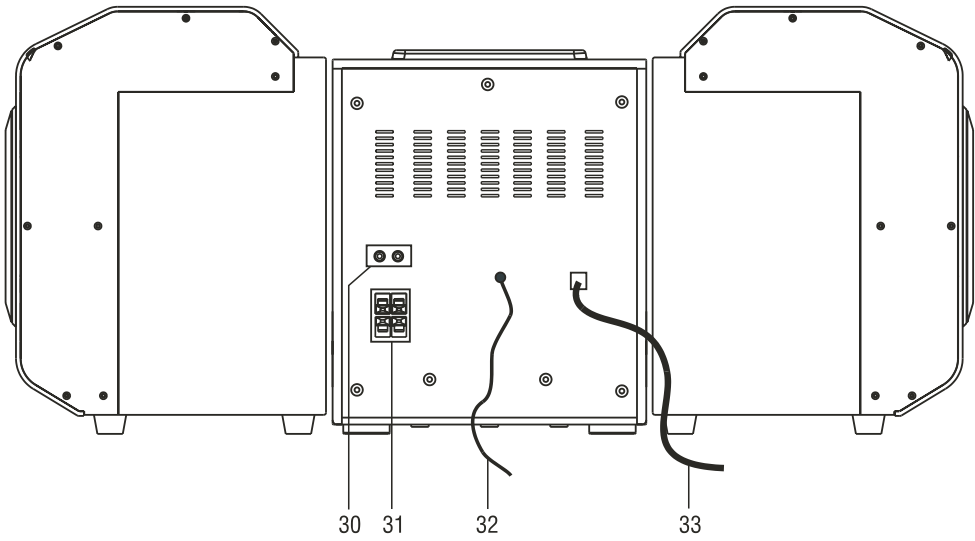
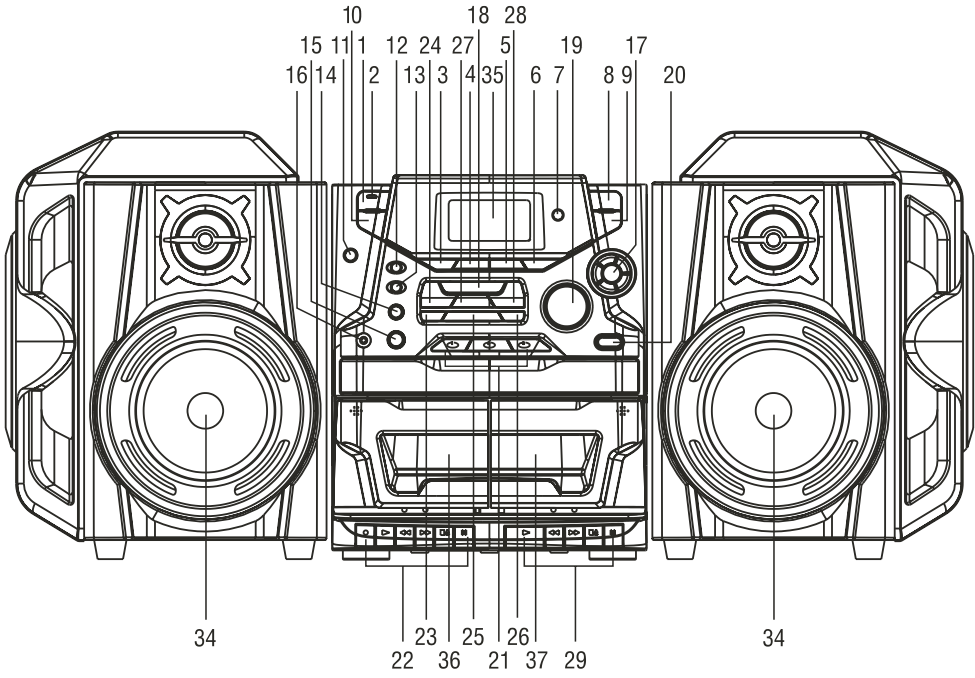
CONNECTING TO MAINS SUPPLY	1
MAINTENANCE AND CARE	2
IMPORTANT NOTES	3
LOCATION OF CONTROLS	5-6
REMOTE CONTROL	6-7
PREPARATION FOR USE	7
LISTENING TO THE RADIO.....	8
HANDLING COMPACT DISCS.....	9
CD PLAYBACK.....	9-11
TO LISTEN TO AN AUXILIARY SOURCE.....	11
CASSETTE DECK FUNCTION BUTTONS.....	11
LISTENING TO TAPE	12-13
CASSETTE MAINTENANCE.....	13
SOUND CONTROLS	14
TO SET THE CLOCK TIME.....	14
SETTING THE TIMER.....	14-15
TECHNICAL SPECIFICATION	16

Pack contents:

- 1 x main unit
- 1 x remote control
- 2 x speakers
- 1 x instruction manual

Please retain all packing material for future transportation of the unit or the unlikely event that the unit needs to be returned for service.

LOCATION OF CONTROLS

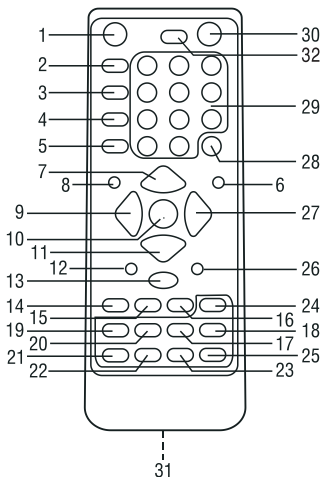


LOCATION OF CONTROLS

- | | |
|------------------------------|------------------------------------|
| 1. POWER BUTTON | 20. CD OPEN/CLOSE BUTTON |
| 2. POWER INDICATOR | 21. DISC 1-3 BUTTONS |
| 3. AUX BUTTON | 22. DECK A CASSETTE KEYS ALIGNMENT |
| 4. CD/MP3 BUTTON | 23. RANDOM&ST./MONO BUTTON |
| 5. TAPE BUTTON | 24. SKIP/TUNING DOWN BUTTON |
| 6. TUNER BUTTON | 25. PROGRAM/MEMORY BUTTON |
| 7. REMOTE SENSOR | 26. REPEAT/MEMORY BUTTON |
| 8. HOUR/FOLDER UP BUTTON | 27. STOP/MEMORY BUTTON |
| 9. MINUTE/FOLDER DOWN BUTTON | 28. SKIP/TUNING UP BUTTON |
| 10. CLOCK/MODE BUTTON | 29. DECK B CASSETTE KEYS ALIGNMENT |
| 11. MUTE BUTTON | 30. LEFT/RIGHT AUX IN SOCKETS |
| 12. TIMER BUTTON | 31. SPEAKER TERMINALS |
| 13. SLEEP BUTTON | 32. FM WIRE AERIAL |
| 14. CD INTRO/DIGIT BUTTON | 33. AC POWER CORD |
| 15. DUBBING BUTTON | 34. SPEAKERS |
| 16. HEADPHONES SOCKET | 35. DISPLAY |
| 17. EQ/X-BASS BUTTONS | 36. DECK A |
| 18. PLAY/PAUSE BUTTON | 37. DECK B |
| 19. VOLUME CONTROL | |

REMOTE CONTROL

- | | |
|----------------------------|--------------------------------|
| 1. OPEN/CLOSE KEY | 27. TUNING UP/SKIP FORWARD KEY |
| 2. DISC 1 SELECT KEY | 28. RANDOM/ST./MONO KEY |
| 3. DISC 2 SELECT KEY | 29. NUMERICAL KEYS |
| 4. DISC 3 SELECT KEY | 30. POWER ON/OFF KEY |
| 5. CD INTRO/DIGIT KEY | 31. BATTERY COMPARTMENT |
| 6. PLAY/PAUSE KEY | 32. DISPLAY BUTTON |
| 7. MEMORY UP/REPEAT KEY | |
| 8. PROGRAM KEY | |
| 9. TUNING/SKIP DOWN KEY | |
| 10. FUNCTION SELECT KEY | |
| 11. MEMORY DOWN/STOP KEY | |
| 12. FOLDER UP/HOUR KEY | |
| 13. CLOCK/MODE KEY | |
| 14. TIMER KEY | |
| 15. SLEEP KEY | |
| 16. BAND KEY | |
| 17. POP EQ KEY | |
| 18. VOLUME DOWN KEY | |
| 19. X-BASS KEY | |
| 20. JAZZ EQ KEY | |
| 21. ROCK EQ KEY | |
| 22. CLASSIC EQ KEY | |
| 23. FLAT EQ KEY | |
| 24. VOLUME UP KEY | |
| 25. MUTE KEY | |
| 26. FOLDER DOWN/MINUTE KEY | |



BATTERY INSTALLATION

Insert 2 AAA size batteries into the battery compartment of the remote controller and replace the cover observing polarity markings.

BATTERY REPLACEMENT

When the batteries become exhausted, the operating distance of the remote controller is greatly reduced and you will need to replace the batteries.

Notes: To maintain the accuracy and long life of the transmitter, do not press two or more Buttons simultaneously.

If the remote control is not to be used for a long time, remove the batteries to prevent possible damage through leaking batteries.

Do not mix different types of batteries, or old batteries with new ones.

USING THE REMOTE CONTROLLER CORRECTLY

Point the remote controller at the Remote Sensor.

The functions of the Buttons on the remote control are the same as the corresponding controls on the main unit.

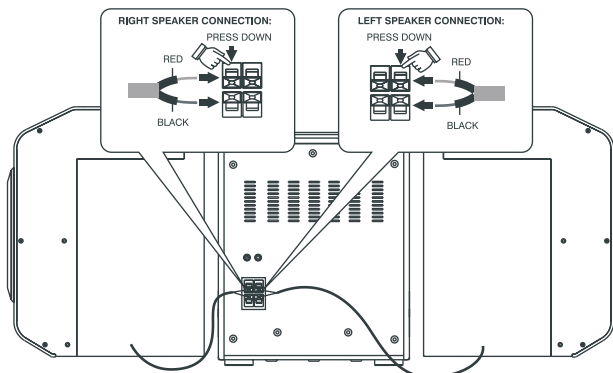
When there is a strong ambient light source, the performance of the infrared Remote Sensor may be degraded, causing unreliable operation.

The maximum effective distance for remote control operation is about 5 metres (16.5 feet).

PREPARATION FOR USE

SPEAKER CONNECTION

Connect the left and right speaker cables to the left and right speaker terminals on the back of the unit. When connecting match the colour of the cable (red or black) to the same coloured terminal to ensure that the correct polarities are observed.



SPEAKER CONNECTION TERMINALS

1. Press and hold down the speaker terminal tab.
2. Insert the speaker wire.
3. Release the tab.

NOTE: Make sure that the power is switched off when connecting or disconnecting the speakers.

LISTENING TO THE RADIO

TO LISTEN TO THE RADIO

Turn on the player by pressing the POWER ON/OFF button.

Press the TUNER/BAND button to select RADIO mode, or press the FUNCTION button on the remote control until "RADIO" is shown in the display. To change the waveband press the TUNER/BAND button again. When finished listening to the radio press the POWER ON/OFF button to turn the unit to standby. If the unit received a FM broadcast in stereo the Stereo Indicator will show. If there is too much noise (hiss) when listening to an FM broadcast, press the RANDOM/ST/MONO button to switch to MONAURAL reception. This will often eliminate any noise. To return to Stereo reception press the RANDOM/ST/MONO.

MANUAL TUNING

Briefly press the TUNING UP/DOWN buttons repeatedly to manually tune to the required station.

AUTOMATIC TUNING

Press and hold the TUNING UP/DOWN buttons until the frequency shown on the display changes rapidly. Then release the button and the unit will automatically tune to the next receivable station.

STORING RADIO STATIONS INTO MEMORY

UP TO 10 MW AND 20 FM STATIONS CAN BE STORED IN MEMORY.

1. Tune to a desired station as described above.
2. Press the PROGRAM/MEMORY button. "MEMORY" will flash in the display.
3. Press the REPEAT/MEMORY UP or STOP/MEMORY DOWN button to select a memory location.
4. Press the PROGRAM/MEMORY button again to store the station into the selected memory location.
5. Repeat the steps above to preset other stations.

NOTE: When selecting a preset the numerical keys cannot be used. The preset stations will be erased in the event of power failure/loss.

LISTENING TO A PRESET STATION

1. Press the TUNER/BAND button, "RADIO" appears in the display.
2. Press the TUNER /BAND button again to choose between FM and MW bands.
3. Press the REPEAT/MEMORY UP or STOP/MEMORY DOWN buttons to select one of the preset memory locations.

TO IMPROVE RECEPTION FOR BOTH MW AND FM BROADCASTING

FM: Unwind the FM aerial wire (attached to the back of the main unit) and adjust the position to receive the best FM reception.

Caution: Do not attach anything to the wire aerial.

MW: When listening to MW, rotate the unit until the best MW reception is received. The MW aerial is built inside the unit.

HANDLING COMPACT DISCS

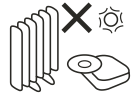
- Although built to withstand a certain amount of the effects from dust, soil and scratches, discs should be treated with the care to ensure the longest lifetime.
 - Always protect a disc against scratches, soil and dust etc. by storing discs in their original cases when they are not being used.
 - Bear in mind the following points, since any dirt, scratches or warping of the disc can cause broken or intermittent sound and also noise.
 - When holding the discs, take care not to touch the playing surface.
 - Store the discs in their cases. Return them to their cases with the label surface facing up and push down lightly on the label surface.
 - Do not place discs near a heating device, in a place where the temperature is high or in dusty areas.
 - Do not write on the label surface using a ballpoint pen and do not stick labels on the CD.
 - Wipe away any fingerprint or dust on the playing surface of a disc using a soft cloth.
- Bear in mind the following points:
- Always wipe from the inside toward the outside of the disc.
 - Never in a circular motion.
 - Do not use conventional record cleaners, anti-static agents, petroleum based products, thinner or other solvents.



HANDLE DISC ONLY AS SHOWN



CLEAN FROM CENTER TO EDGE



DO NOT STORE NEAR HEAT

CD PLAYBACK

1. Press the POWER button to turn on the player.
2. Press the CD button or repeatedly press the FUNCTION button on the remote control until "CD" is shown in the display.
3. Press the CD OPEN/CLOSE button to open the CD tray.
4. Place a CD into one of the empty CD trays. Place another into the other empty CD tray.
5. Press one of the DISC buttons until the trays rotate and then insert a third disc into the empty tray.
6. Press the CD OPEN/CLOSE BUTTON to close the CD tray.
7. The set will search the trays automatically, if a disc is found in one of the trays, playback will commence from the beginning of that track.
8. Press CD PLAY/PAUSE BUTTON again to pause playback.
9. To resume playback, press the CD PLAY/PAUSE button once again.
10. To Stop play back press the CD STOP button.

NOTE: This unit will play CD, CD-R, MP3-CD and WMA CD.

TRACK SKIP

TO SKIP TO THE NEXT TRACK ON A DISC.

1. Press the SKIP/TUNING UP button once.
- The CD player will skip ahead to the next track each time the SKIP/TUNING UP button is press. Repeatedly pressing the SKIP/TUNING UP button to skip ahead through the disc track by track. Once the last track on the disc is reached the next disc will be selected.

TO SKIP BACK TO THE PREVIOUS TRACK ON A DISC.

Press the SKIP/TUNING DOWN button. If this button is pressed once when in the middle of a track, the CD player will skip back to the beginning of that track, to skip back to the previous track press the button again.

The CD player will skip back to the previous track each time the SKIP/TUNING DOWN button is pressed. Repeatedly press the SKIP/TUNING DOWN button to skip back through the disc track by track. Once the first track on the disc is reached the previous disc will be selected.

ID3 TAG INFORMATION OF AN MP3 DISC (FOR SPECIFIC MP3/WMA DISC)

The information of the current track on an MP3 CD is shown in the display automatically, to display the track number and elapsed time press the Display button. Press the Display button again to return the ID3 tag information display.

REMOVING A DISC

1. Stop CD playback by pressing the CD STOP button.
2. Press the OPEN/CLOSE button to open the CD tray.
3. Gently remove the disc, press DISC 1-3 buttons to rotate the CD trays.
4. Close the CD tray by pressing the CD Open/Close button again.
5. Place the discs back in their protective storage boxes.

DISC BUTTONS (DISC 1, DISC 2, DISC 3)

- If the Disc Tray is opened, press the relevant button to select a desired disc.
- During normal playback or in CD stop mode, press any one of these buttons and playback will skip to the specified disc and start automatically if the disc selected is valid.

PROGRAMMED DISC PLAY

Load 1, 2 or 3 discs into the CD player.

To programme tracks for playback, follow the steps described below:

1. When in stop mode press the PROGRAM/MEMORY button, "MEMORY" will be shown on the display and the DISC # Indicator will flash in the display.
2. Press DISC 1, DISC 2, DISC 3 buttons and SKIP/TUNING buttons to select the disc and track to be programmed.
3. Press the PROGRAM/MEMORY button to enter the selected track into memory. P-01, P-02 P-40 indicate which memory the track will be stored in.
Repeat steps 2 and 3 to programme other tracks; up to 40 tracks can be stored into memory.
4. Press the PLAY/PAUSE button to play the programmed sequence of tracks.
NOTE: The DISC SELECT buttons will be disabled during Programme playback.
5. Press the STOP/MEMORY DOWN button to erase the programmed tracks from memory.

REPEAT DISC PLAY

The Repeat feature allows you to play one track, one disc or all discs repeatedly. Operations are as follows:

AUDIO CD:

1. To repeat one track, press the REPEAT/MEMORY UP button once.
2. To repeat one disc, press the REPEAT/MEMORY UP button twice.
3. To repeat all discs, press the REPEAT/MEMORY UP button three times.
4. To cancel repeat, press the REPEAT/MEMORY UP button until the repeat indicator is removed from the display.

MP3/WMA:

1. To repeat one track, press the REPEAT/MEMORY UP button once.
2. To repeat the current directory, press the REPEAT/MEMORY UP button twice.
3. To repeat one disc, press the REPEAT/MEMORY UP button three times.
4. To repeat all discs, press the REPEAT/MEMORY UP button four times.
4. To cancel repeat, press the REPEAT/MEMORY UP button until the repeat indicator is removed from the display.

INTRO PLAY(FOR NORMAL CD DISC ONLY)

The intro feature will playback the first 10 seconds of each track on all discs.

Press the CD INTRO/DIGIT button. Play will start automatically, and the INTRO Indicator will appear in the display.

To cancel the INTRO feature, press the CD INTRO/DIGIT button again or the STOP button.

FOLDER UP/FOLDER DOWN (FOR MP3/WMA DISC ONLY)

The folder navigation feature allows you to locate a specific folder on an MP3/WMA disc for playback. Press Folder up button during MP3/WMA disc playback or in disc stop mode to skip to the next folder on the MMP3/WMA CD.

Press Folder down button during MP3/WMA disc playback or in disc stop mode to skip back to the previous folder on the MP3/WMA CD.

In WMA/MP3 disc playback, you may use the Numeric buttons to select the desired track:

1. Press one of 1-9 buttons to go to the corresponding track °
2. Press 0 button to go to the tenth track.
3. For a track after the tenth track, for example, if the 25th track is the desired track, press twice 10+ button, and then 5 button to listen to it; for the 135th track, press 13 times 10+ button and then 5 button to listen to it. And so on.

RANDOM PLAY

The Random feature allows you to play tracks in a random order from each discs.

Press the RANDOM button when the unit is in stop mode. The RANDOM Indicator will show in the display.

To cancel the Random playback, press the Random button again or the Stop button.

TO LISTEN TO AN AUXILIARY SOURCE

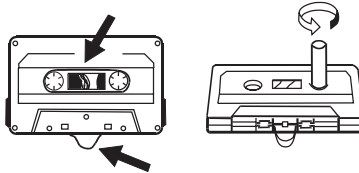
1. Connect an auxiliary source to the main unit by means using the AUX IN SOCKETS on the rear of the unit.
2. Press the Power button to turn on the unit.
3. Press the AUX button on the front panel or press the FUNCTION button on the remote repeatedly until the "AUX" indicator is shown in the display.
4. Play the auxiliary source.
5. Adjust the sound using the Volume and EQ buttons.

CASSETTE DECK FUNCTION BUTTONS

- | | | |
|------------|-----|--|
| REWIND | ◀◀ | : Press this button to rewind the tape rapidly. |
| PLAY | ▶ | : Press this button to start playback. |
| F.FWD | ▶▶ | : Press this button to advance the tape rapidly. |
| RECORD | ● | : Press this button to start recording.
(This engages the PLAY button at the same time (one touch recording)) |
| STOP/EJECT | ■/▲ | : To stop the tape, press this button. To open the cassette holder, press the button again. |
| PAUSE | | : Press this button to pause during recording or playback. To resume, press the button once again. |

LISTENING TO TAPE

1. Press the POWER button to turn on the player.
2. Press the TAPE button, "TAPE" appears in the display.
3. Open the cassette door by pressing the cassette STOP/EJECT button (in some cases, you may have to press the cassette STOP/EJECT button twice since this button has combined functions).
4. Insert a tape into deck A or B. Make sure the full reel is on the left and the exposed part of the tape faces downward, make sure the tape inside is not slack or loosely wound. If it is, insert a pencil into the reel and turn until the tape is wound up.
5. Close the cassette door.
6. Press the cassette PLAY button.
NOTE: If the PLAY button pops up, reverse the tape or press REWIND button.
7. Adjust the volume to your listening preference, choose your favorite EQ sound effect by pressing the Equalizer buttons and X-Bass button.
8. To stop the tape, press the cassette STOP/EJECT button.
9. To remove the tape, press the cassette STOP/EJECT button again and the cassette door will open.
 - Before inserting a cassette, take up any slack in the tape to prevent it from becoming tangled around the capstan.



CONTINUOUS PLAYBACK

1. Press the TAPE button, "TAPE" appears in the display.
2. Press both STOP/EJECT buttons, insert pre-recorded cassette tapes with full reel on the left into deck A and B, and then close the lids.
3. Depress the PLAY button of deck B.
4. Depress the PAUSE button and the PLAY button of deck A.
5. Adjust the volume to a desired level.
6. When playback ends on deck B, it will automatically stop, and release the PLAY button of deck B. At the same time PAUSE button of deck A is released, and playback from deck A will commence.

RECORDING

TO RECORD TO A CASSETTE TAPE

Your equipment is able to record your desired sound source from the radio, AUX or CD mode on a cassette in deck A.

1. Insert blank cassette in deck A.
2. Depress PAUSE button on deck A.
3. Depress RECORD button on deck A.
4. Select your playing mode by pressing one of the function buttons and play the program.
5. To start recording, press PAUSE button on deck A again.
6. To stop recording, press STOP/EJECT button.

TAPE DUBBING FROM DECK "B" TO DECK "A"

1. Press the TAPE button to select TAPE mode.
2. Set "HIGH" or "NORMAL" dubbing speed using the "DUBBING" button on the front panel.
3. Insert recorded cassette into deck B and blank cassette into deck A.
4. Press PAUSE button on deck A.
5. Press RECORD button on deck A.
6. To start dubbing, press PLAY button on deck B.
7. To stop dubbing, press STOP/EJECT buttons on both decks.

RECORDING FROM CD

1. Press the STOP/EJ key to open the cassette door on Deck A. Insert a blank tape and close the door.
2. Load CD's (Refer to **CD PLAYBACK** for details of operation).
3. Press the Record key. The Play key is automatically engaged.

RECORDING FROM RADIO

1. Press the STOP/EJ key to open the cassette door on Deck A. Insert a blank tape and close the door.
2. Select the desired radio station. (Refer to **Listening to the Radio** for details of operation).
3. Press the Record key. The Play key is automatically engaged.

RECORDING FROM AN AUXILIARY SOURCE

1. Press the STOP/EJ key to open the cassette door on Deck A. Insert a blank tape and close the door.
2. Select the desired radio station. (Refer to **To Listen to an Auxiliary Source** for details of operation).
3. Press the Record key. The Play key is automatically engaged.

CASSETTE MAINTENANCE

CLEANING

To clean the cassette mechanism use a CLEANING CASSETTE TAPE available from all good audio stores.

CLEANING THE CABINET

BEFORE CLEANING ENSURE THAT THE UNIT IS DISCONNECTED FROM THE MAINS POWER SUPPLY.

Clean the cabinet, panel and controls with a soft cloth lightly moisten with a mild detergent solution. Do not use any type of abrasive pad, scouring powder or solvent such as alcohol or benzine.

SOUND CONTROLS

ADJUSTING THE SOUND

To increase the volume, press the VOLUME UP on the remote or twist the volume control clockwise. To decrease the volume, press the VOLUME DOWN on the remote or twist the volume control anti-clockwise.

MUTING THE SOUND

Press the MUTE button to mute the volume. Press the MUTE button again to restore the volume to the previous level.

SELECTING A PRESET EQUALIZER

The preset equalizer can be used to add enhanced effects to the audio output. The available effects are JAZZ, CLASSIC, ROCK, POPS and FLAT (normal/off). Press the relevant button for the required effect.

BASS BOOST

Press the X-BASS button to enhance the bass output of the audio.

HEADPHONES(NOT INCLUDED)

Connect the headphones to the Headphones socket (3.5mm) on the front of the unit. The sound from the speakers will be turned off automatically.

CAUTION: SET THE VOLUME TO A LOW LEVEL BEFORE PUTTING ON THE HEADPHONES. GRADUALLY ADJUST THE VOLUME TO A COMFORTABLE LISTENING LEVEL. PLEASE DO NOT PLAY THE VOLUME TOO LOUDLY FOR EXTENDED PERIODS OF TIME FOR OTHERWISE IRREVERSIBLE DAMAGE WILL BE DONE TO THE LISTENERS EARS.

TO SET THE CLOCK TIME

1. Press the POWER Button to turn on the unit.
2. Press the clock mode button, the clock will flash in the display.
3. Whilst the clock is flashing, press the HOUR/FOLDER UP button to adjust the hour digits to the current time.
4. Whilst the clock is flashing, press the MINUTE/FOLDER UP button to adjust the minute digits to the current time.
5. Press the PROGRAM/MEMORY button to set the clock. The clock will then stop flashing.

SETTING THE TIMER

SETTING THE TIMER-ON TIMER

1. press the Power button to turn on the unit.
2. Press the Clock/Mode button twice. The TIMER ON indicator will flash in the display
3. Press the Hour button to change the Hour setting. Press the Minute button to change the Minute setting.
4. Press the Program/Memory button to enter the time into memory.

SETTING THE TIMER-OFF TIMER

1. Press the POWER button to turn on the unit.
2. Press Clock/Mode button three times. The TIMER OFF indicator will flash in the display.
3. Press the Hour button to change the Hour setting. Press the Minute button to change the Minute setting.
4. Press the Program/Memory button to enter the time into memory.

PREPARING THE SOURCE FOR TIMER OPERATION

1. Press the Power button to turn on the unit.
2. Prepare the source. Refer to the appropriate sections for detailed instructions.
To listen to a CD, select the CD to be played first.
To listen to the radio, tune to a station.
3. Adjust the sound using the Volume and Equaliser controls.
4. Press the Power button to turn off the unit. The power indicator will illuminate.
Note: It is not recommended to use the tape as the source for TIMER as this can cause permanent damage to the mechanism.

ACTIVATING THE TIMER FUNCTION

Press the Timer button once. The Timer Indicator will appear in the display

1. At the preset Timer On time, the unit will turn on, and the selected source will play.
2. The unit will turn off at the preset Timer Off time.
Note: Timer playback will not begin unless the unit is in standby.

TO CANCEL THE TIMER FUNCTION

Press the Timer button repeatedly until the Timer Indicator is no longer shown in the display.

SETTING THE SLEEP TIME

The unit can be set so that it will go to standby automatically after a certain period of time has elapsed.

1. Press the Power button to turn on the unit.
2. Play the desired source.
3. Press the SLEEP button on the remote control repeatedly to select a sleep time between 90 and 10 minutes (in 10 minute steps.)
4. To cancel the sleep function, press the SLEEP button repeatedly until the normal display is shown and the "SLEEP" indicator is no longer shown in the display.

TECHNICAL SPECIFICATIONS

Power supply

AC 230V ~ 50Hz

Radio frequency coverage

FM 87.5 - 108 MHz

MW 530 - 1710 kHz

CD player

Pick up 3-beam, Semi-conductor Laser

Recording System AC Bias

General

Power output: 2x25 Watts RMS

Headphones 3.5mm stereo jack plug

Dimension & Weight

Unit dimensions 384.5 x 270 x 325 mm (L x W x H)

Speaker dimensions 381.5 x 278.0 x 354.0 mm (L x W x H)

Total unit weight 9.8KG (Speakers Excluded)

As we continually try to improve our products the specification are subject to change without notice.