

Goodmans

GMP32000B/GMP32000S INSTRUCTION MANUAL



**Before operating this unit
Please read this Instruction Manual carefully**

Introduction

Thank you for purchasing this **Goodmans** product.

The **GMP32000B** or **GMP32000S 2GB MP3/WMA Player** is a portable device with multiple features and functions, details of which are described in the following pages.

- **MP3/WMA/WMA-DRM9 Format File playback**
- **Voice recording** - The unit can record voice through the internal microphone encoding directly into WMA format.
- **Universal storage** - the unit can operate as a mass storage device and can be used for file storage i.e. between work and home etc.
- **Direct PC compatibility** - operates without the need to install driver software on Windows ME/2000/XP and comes complete with a driver for use Windows 98SE
- **Sound Enhancement EQ** - inbuilt equaliser for Flat, Classic, Jazz, Rock and Pop effects.

To transfer purchased tracks (WMA DRM encoded) to the GMP32000B or GMP32000S Windows Media Player 10 must be used. Note: this is exclusively available with Windows XP alternatively use the application recommended by the online music download service

Note: Services and applications must be Windows Media audio-compliant and support Digital Rights Management. Windows XP required. Apple iTunes music content is NOT supported.

This instruction manual is important. Please read it, in a short time it will show how to connect, operate and adjust the unit for best performance. It can also save money, it shows simple things to do and check before calling us for assistance.

Table of Contents

Table of Contents

Introduction.....	1
Table of Contents.....	2
System Requirements.....	3
Precautions & Safety Notes.....	4
General Information.....	5
Controls and Indicators.....	6
Power Source.....	7
PC Connection.....	8
Software Installation.....	10
Getting Started	14
Customized Settings.....	19
Troubleshooting Guide & Maintenance.....	23
Product Specifications.....	25

Your package includes the following components:

- 1 x Main Unit (GMP32000B or GMP32000S, 2GB Digital MP3/WMA Player)
- 1 x Pair of Earphones
- 1 x USB Cable
- 1 x Carrying Pouch
- 1 x AC Adapter (230 Volts to DC 5 Volts)
- 1 x Instruction Manual
- 1 x Driver Installation CD (with operating software for Windows 98SE)

Note: Please retain all packaging materials for future transportation or in the unlikely event the product should need to be returned for repair.

Warning:

- The AC Adapter supplied with the unit must not be used with other equipment.
- Use only the supplied AC Adapter for charging this model.

System Requirements

Hardware and software requirements

Computer	IBM PC/AT-Compatible (not operable with Macintosh)
Operating System	Microsoft® Windows® 98SE/ME/2000 Professional/ XP Home Edition standard install
CPU	Windows® XP Professional/XP Home Edition Pentium® II 300 MHz or higher Windows® Millennium Edition, 2000 Professional, Windows® 98SE MMX® Pentium® 233 MHz or higher
Memory	64MB minimum (128MB or more recommended for Windows XP)
Hard disk space	10MB minimum required
Drive	CD-ROM drive
Interface	Available USB Port (USB 2.0)
Display	1024 x 768 pixels or better, higher colour (16-bit) or better

Secured music download requirement

O/S:	Windows XP SP1* or higher (Note: SP = Service Pack)
Software:	Windows Media Player 10.0 or higher (<i>Windows Media Player 10.0 is only available for Windows XP users</i>)

Notes:

- Operation is not guaranteed on all the compatible computers.
- Operation is not guaranteed on computers running upgraded OS or multiple OS with dual-boot. NTFS format can be used for standard installation only.
- Depending on the Windows version, more free space maybe necessary. Music data also requires more space.

Precaution & Safety Notes

CAUTIONS !



Do not subject to excessive force or impact



Keep away from moisture



Keep away from strong magnetic fields



Keep away from direct sunlight



Stay away from High Temperature



This player should not be dismantled

Safety Notes

Power Sources

Be sure that the local voltage is corresponding with the supplied AC Power Adapter before using this product. If the AC Power Supply exceeds the limit it may cause malfunction or permanent damage to this unit.

Battery

The unit has a non-removable battery. If the unit is not used for a while the battery may need to be recharged.

Listening with Earphone

Your hearing is very important to you and to us so please take care when operating this equipment. It is strongly recommended for not playing the unit with too high volume. If you experience ringing in your ears, reduce the volume or discontinue usage.

Road Safety

Do NOT use while driving any kind of motor vehicles or motorcycles. It may create a traffic hazard and it is illegal in many areas. It is dangerous to listen at high volume while crossing roads.

Never detach the cover

Removing any of the covers will invalidate the warranty and could result in a hazardous situation.

NEVER use the supplied AC/DC Power Supply to power other products.

General Information

Software and operation manual

- Reproduction in part or in whole without prior permission is prohibited.
- Before using third-party connecting devices or software, consult the dealer or manufacturer. Manufacturer shall not be responsible for any damages caused by malfunction resulting from the unspecified products.
- Screen shots in the manual are for reference only. Manufacturer shall not be liable for any errors in this manual.
- Specifications, contents are subject to change without notice for improvement.

Copyright and Trademarks

© All rights reserved. All other brand and product names listed are trademarks or registered trademarks of their respective holders and are hereby recognized as such.

If a power failure occurs

- Any voice recordings being made will be damaged if power failure occurs.
- Any tracks being played back may be damaged.

For important recording

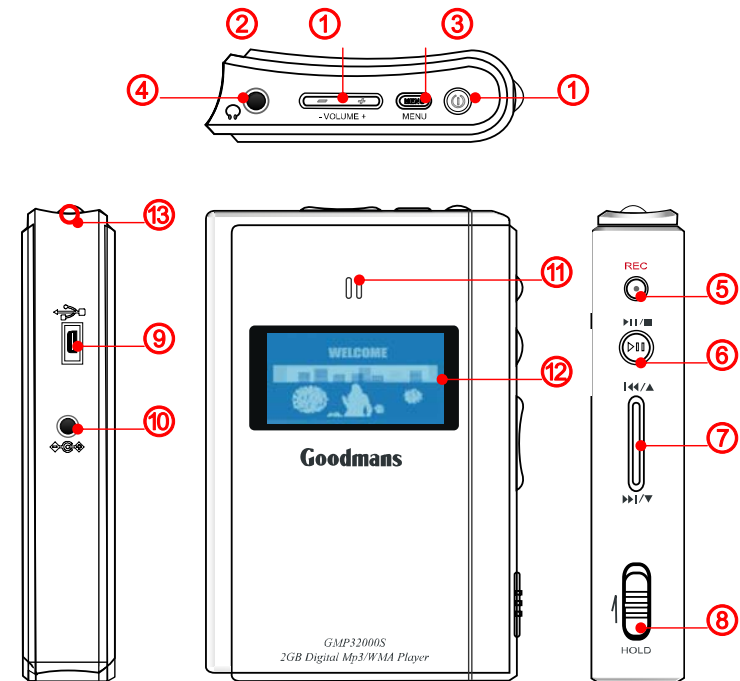
- If the HDD malfunctions, the contents recorded on the HDD maybe lost. To save contents permanently it is recommended to copy the content to a PC, etc...as backup.

Audio data

- Backup data stored on this product periodically in case of loss or malfunction.
- Goodmans cannot be held liable for any damages or loss of data resulting from defects in this product or your computer.

Note: In the unlikely event that there is some problem like loss of recorded audio contents due to HDD malfunction, please be aware beforehand that, Manufacturer will bear no responsibility to compensate for the content which could not be recorded or edited, for the loss of recorded or edited audio contents, or for other related direct or indirect damages.

Controls and Indicators



- 1 Power **ON/OFF** Button
- 2 **MENU** Button
- 3 **VOLUME +/Up & VOLUME -/Down** button
- 4 Earphone Socket
- 5 **REC** Button
- 6 **PLAY/PAUSE/STOP** button
- 7 **Skip Up (Up) & Skip Down (Down)** button
- 8 **HOLD** Switch
- 9 USB Socket
- 10 DC Socket
- 11 Inbuilt Microphone
- 12 Display
- 13 Land-yard Hole (for earphone neck-strap)
- 14 Reset Hole (on the bottom of the unit)

Power Source

The **GMP32000B** or **GMP32000S** has a non-removable battery. It can be charged with the supplied AC Adapter.

Charging the main unit

1. Connect the AC adapter to the DC-In 5V socket on the unit
2. Plug the AC adapter into the wall socket, the unit starts charging.

About Charging Time

The battery fully charges in about **3.5** hours, and “**Charging Completed**” will display on the screen.

Notes:

- The unit may get warm during or after charge. This is normal.
- When charging battery for the first time or after a long period of disuse, battery life may be shorter. Repeat charge/discharge cycle 4 to 5 times to restore the full capacity.

Built-In Battery

- The built-in battery may discharge completely after long period without use. Recharge the battery before use.
- Charging time depends on the battery condition and ambient temperature.
- At low temperatures, continuous playing time is shortened.
- Manufacturer shall not be liable for any damages resulting from loss or alteration of data caused by malfunction, repairs, or complete discharge of the battery.

Checking the remaining amount of battery power

The remaining amount of battery power will be shown by the battery indicator in the display.

How to read the battery indicator



when battery is Low
the battery indicator
starts flashing

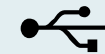
when battery is Full

PC Connection

Connecting the unit to a PC

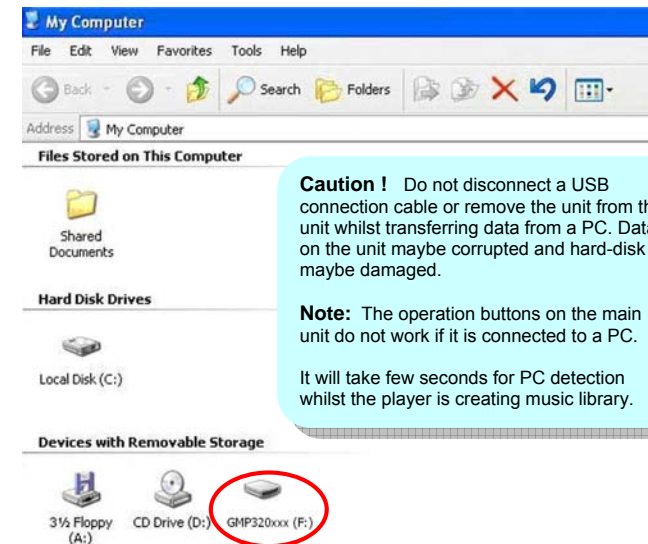
1. Connect the unit to a PC with the supplied USB connection cable, by inserting the smaller plug to the unit and the larger plug to the USB port of the computer.

Plug-and-Play feature of the PC OS will automatically detect the device. Whilst the unit is connected to the PC, the USB symbol shown below appears.



USB CONNECTING

2. Double Click the “**My Computer**” icon, a window will open and “**GMP320xxx**” will be shown typically designated E: and F: if the computer has one hard drive or partition and one CD-ROM drive.



Caution ! Do not disconnect a USB connection cable or remove the unit from the unit whilst transferring data from a PC. Data on the unit maybe corrupted and hard-disk maybe damaged.

Note: The operation buttons on the main unit do not work if it is connected to a PC.

It will take few seconds for PC detection whilst the player is creating music library.

PC Connection (contd.)

Disconnecting the unit

The **GMP32000B** or **GMP32000S** can be used in the same way as a normal hard drive and MP3 and WMA files can be dragged into the drive to add them to the player memory. Once the required files have been copied to the removable drive:

■ Windows XP Home Edition/Professional

1. Click on the **Safely Remove Hardware** icon on the taskbar.
2. Click "**Safely Remove USB Mass Storage Device - Drive (*)**".
3. "**Safe To Remove Hardware**" appears. Click the message and disconnect the USB connection cable from the PC.

■ Windows 2000 Professional

1. Click **Unplug or Eject Hardware** icon on the taskbar.
2. Click "**USB Mass Storage Device - Stop Drive**".
3. "**USB Mass Storage Device can now be safely removed**" appears. Click "**OK**" button and disconnect the USB connection cable from the PC.

■ Windows Millennium Edition

1. Click **Remove Hardware** icon on the taskbar.
2. Click "**USB Disk - Stop Drive**".
3. "**USB Mass Storage Device can now be safely removed**" appears. Click "**OK**" button and disconnect the USB connection cable from the PC.

■ Windows 98 Second Edition (Win98SE)

1. Click **Safely Remove Hardware** icon on the taskbar.
2. Select "**Stop USB Card Reader**".
3. Then **Device is removed successfully** appears. Click "**OK**" button and disconnect the USB connection cable from the PC.

When the player is disconnected from the PC the following message appears in the display and the player shuts down.

USB
Disconnected

Software Installation

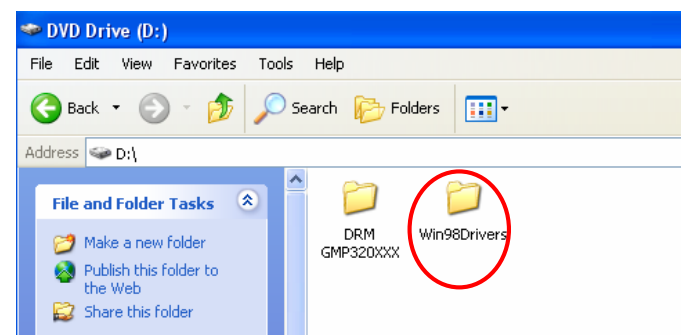
The installation CD that comes with the **GMP32000B** or **GMP32000S** contains the necessary drivers required to enable the player to connect to a computer running Windows 98SE.

- **Windows 98SE Driver**
- **Plug-In driver for secure music file transfers from PC to player**
(for Windows XP, Windows Media Player 10 only)

Windows 98SE Driver (for Windows 98SE users only)

To use the **GMP32000B** or **GMP32000S** on a PC running Windows 98SE please install a driver for the product.

1. Insert the supplied installation CD into the computer CD-ROM drive.
2. Double click on "**My Computer**" icon and double click on the CD-ROM drive icon and point Windows to the "**Windows98 Driver**" folder when it asks for a driver after connecting the unit to the PC via the USB cable. (**Note:** this player does not work with Windows 95 O/S as USB is not supported)

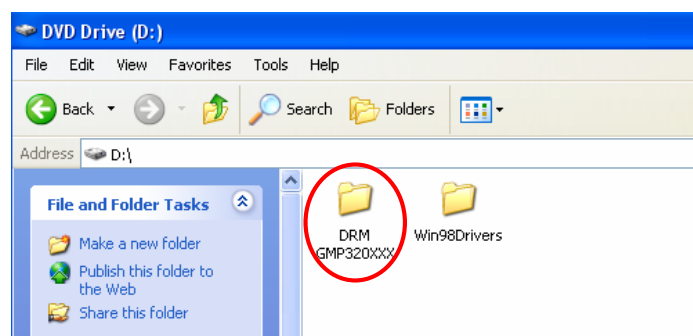


Software Installation (contd.)

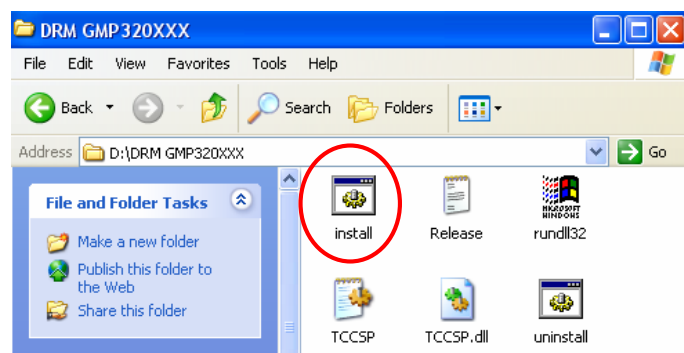
Plug-In driver for transferring secure music files (for Windows XP, Windows Media Player 10 only)

To transfer the secure music download files to your player, Windows Media Player 10.0 must be used or the application recommended by the online music download service.

1. Insert the supplied installation CD into the computer CD-ROM drive.
2. Double click on **"My Computer"** icon and double click on the CD-ROM drive icon, and select **"DRM GMP320XXX"** folder.



3. Double click **"Install"** to run the installer.

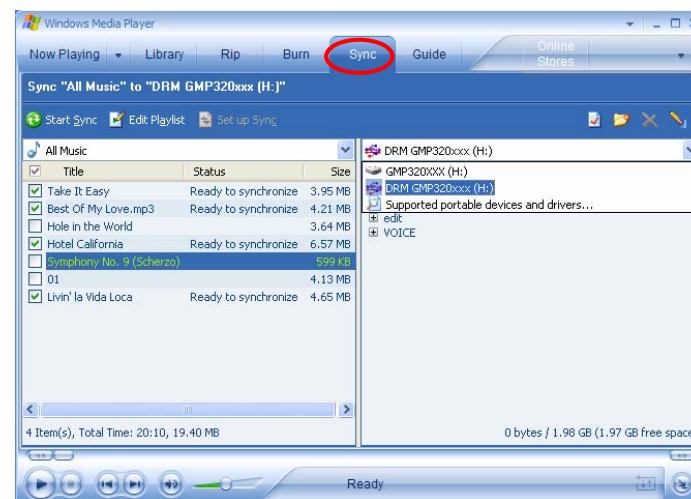


4. Follow the onscreen instructions to install the plug-in driver.

Software Installation (contd.)

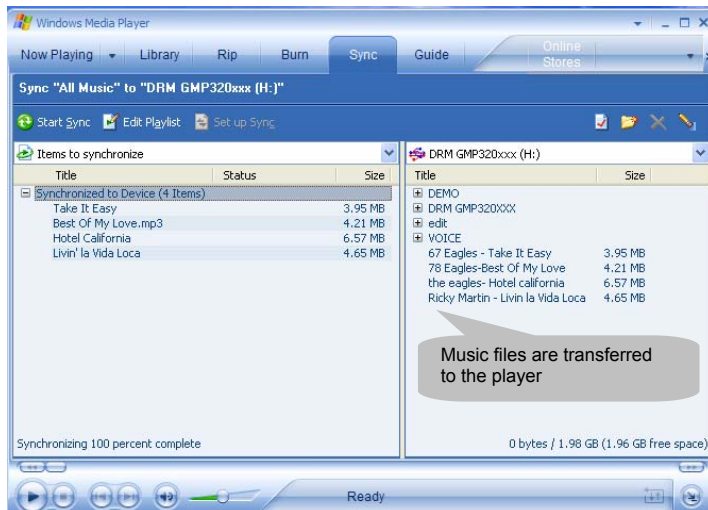
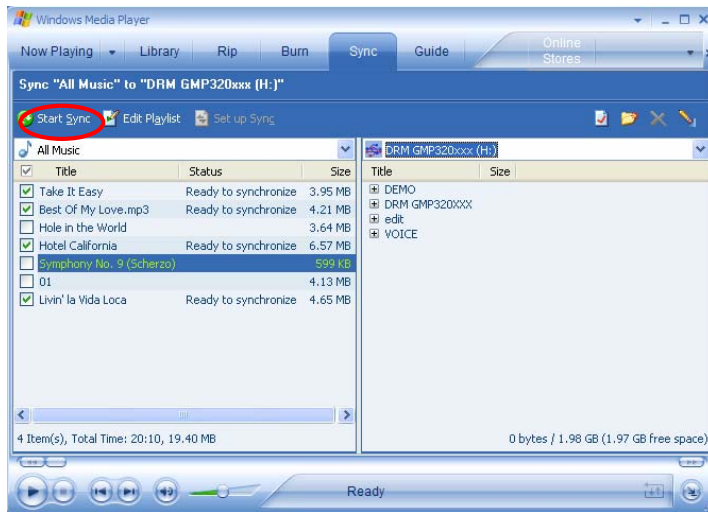
The Sync feature in Windows Media Player 10 enables synchronization of secured music files in categories to the library of the player.

1. Connect the player to the PC and start Windows Media Player 10
2. Select the music files to transfer to the player from the menu bar.
3. Drag and drop the selected items to the right column.
4. Select **Sync** from the menu bar and select to the player as **"DRM GMP320xxx"**



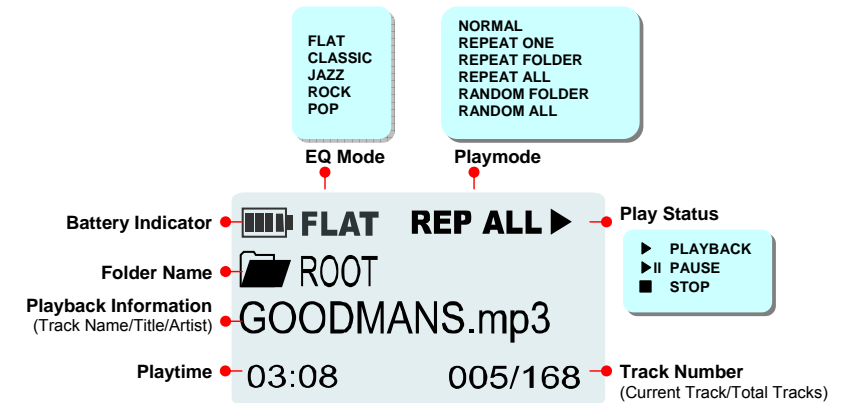
5. Select **Start Sync**, the selected item will be synchronized to the player automatically.

Software Installation (contd.)



Getting Started

Display Icons



Getting Started (contd.)

Switching the power ON

To switch the player **ON** first ensure the HOLD switch is in the Off (pushed fully towards the up) position then press and hold the **POWER** button for more than 2 seconds.

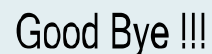
The start-up screen logo appears and the hard disk starts to load information.



The first music track will appear together with track and file information ready for playback, if no files have been loaded onto the player "No Music File" will show in the display.

Switching the power OFF

To switch the player **OFF** firstly ensure the Hold switch is in the Off (pushed fully towards the up) position then press and hold the **POWER** button for more than 2 seconds, the hard disk will take few seconds to save last status data and the player will then power down.



Please also note that the player has an auto power off function whereby if no music is playing or no menu actions are taken the player will power down in 1 minute to preserve battery life.

Getting Started (contd.)

Playing transferred music

Power on the unit.

To locate the desired portion:

Press and hold the **FF** button for **Fast Forward (FF)** during playback.
Press and hold the **FR** button for **Fast Rewind (FR)** during playback.

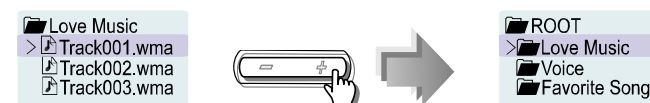
To select tracks for playback:

To select music or recorded voice tracks using the **FOLDER BROWSER** function.

1. Press the **MENU** button ONCE to enter the **FOLDER BROWSER** during playback.



2. Use **◀** or **▶** buttons to browse the available tracks. Select the desired **FOLDER** or track and press **▶▶▶ PLAY/PAUSE**.
3. Using the same method as in point 2 any subfolders can be accessed.
4. Use **VOL+** button to return to the Upper Level/Folder or ROOT Directory.



5. Use **◀** or **▶** buttons to browse the available tracks. To select a track to playback press **▶▶▶ PLAY/PAUSE**.

To interrupt playback:

Press the **▶▶▶ PLAY/PAUSE**.

To resume playback, press the **▶▶▶ PLAY/PAUSE** again.

To stop playback:

Press & hold the **▶▶▶ PLAY/PAUSE** for more than 2 seconds.

Getting Started (contd.)

Volume Control

During playback use the **VOL +** or **VOL -** buttons to increase or decrease the volume level through the earpieces.

Hold function

This feature enables the locking of the buttons on the unit to prevent accidental operation during use and transportation. To activate move the **HOLD** switch on the side of the unit to the **ON** (UP) position the **HOLD** will show in the display.



To unlock the buttons move the **HOLD** switch to the **OFF** (DOWN) position. If the hold function is active "**Hold**" will appear in the display if any button is pressed.

Voice Recording

Voice or music data can be recorded through the in-built microphone.

1. Power on the unit.
2. Hold down the **• REC** button for 2 seconds.
3. Recording starts.

To interrupt recording:

Press the **• REC** button for 1 second.
To resume recording, press the **• REC** button again.

To stop recording:

Press the **• REC** button for 2 seconds to stop recording. To listen to the recorded data after recording, press the **▷||| PLAY/PAUSE** button to listen to the recorded data immediately or press any other button to listen to it later.

Notes:

- Whilst recording the backlight will be turned off automatically.
- It is possible to change the recording quality as required. (Please refer to the section of **Customized Settings**).
- Whilst recording with the in-built microphone, data is written to the hard disk at regular intervals (**High quality at 128 kbps, Medium quality at 64 kbps, and Low quality at 32 kbps**). Some mechanical noise may be heard during this process, this is normal and to be expected.

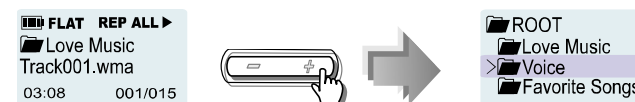
Getting Started (contd.)

Playing a recorded voice file

1. Power on the unit.
2. Press the **MENU** button ONCE to enter the **FOLDER BROWSER** select the voice menu, then scroll through the available recorded voice tracks and select the required track for playback by using the **▷||| PLAY/PAUSE**.



OR use VOL+ button to return to the ROOT Directory during MUSIC playback.



3. Using the same method as in point 2 any subfolders can be accessed.
4. Use **◀** or **▶** buttons to browse the available tracks. Select the desired **FOLDER** or track and press **▷||| PLAY/PAUSE**.

To interrupt playback:

Press the **▷||| PLAY/PAUSE**.
To resume playback, press the **▷||| PLAY/PAUSE** again.

To stop playback:

Press the **▷||| PLAY/PAUSE** for more than 2 seconds to stop playback.

Customized Settings

To change the default settings of Equalizer, Play mode.

1. During playback press the **MENU** button TWICE to access the **MAIN MENU**.



2. Use **◀** or **▶** buttons to select the required option, and press **▶▶▶ PLAY/PAUSE**.
3. Select a menu in the same way as step 2. (ex: "EQ Mode" is selected)
4. Change the setting item in the same way as step 2.
5. Press the **MENU** button again to exit the selection.

In the **MAIN MENU** the following functions can be accessed the bottom 5 functions are contained within the settings submenu.

Advanced Settings and Functions

Equalizer	Adjust sound effect settings (Flat, Classic, Jazz, Rock and Pop)
Play Mode	Play music tracks Repeatedly or Randomly
Backlight	Set the backlight timer
Contrast	Adjust display contrast level
Record Quality	Adjust the voice record quality
Factory Default	Restore player firmware settings back to the default values set at time of manufacture
Information	Display Disk Usage / No. of Files and Firmware Version of the player

Customized Settings (contd.)

Equalizer (EQ Mode)

The unit has FIVE preset equalizer effects: **FLAT***, **CLASSIC**, **JAZZ**, **ROCK** and **POP**. Select an effect according to a music genre or personal preference.
Note: (*) indicates the default setting.

1. Press the **MENU** button TWICE during playback.
2. Use **◀** or **▶** buttons to browse the **MAIN MENU** options and select **EQ MODE** press **▶▶▶ PLAY/PAUSE**.
3. Select the **Equalizer** effect and then confirm the selection in the same way as Step 2
4. Press **MENU** button to return to the main menu. Playback starts in the selected EQ mode.

Play Mode (Repeat Play or Random Play)

1. Press the **MENU** button TWICE during playback.
2. Use **◀** or **▶** buttons to browse the **MAIN MENU**, select **PLAY MODE** press **▶▶▶ PLAY/PAUSE**.
3. Select **REPEAT (One, All, Folder)**, **RANDOM (Folder, All)** or **Normal*** in the same way as Step 2.

Submenu under "PLAYMODE"

Normal*:	Normal playback.
Repeat One:	Playback only the selected audio data (single).
Repeat Folder:	Playback all audio data in a folder.
Repeat ALL:	Playback ALL audio data on the main unit.
Random Folder:	Random play all audio data in a folder
Random ALL:	Random play ALL audio data on the main unit.

Note: (*) indicates default setting.

4. Press **MENU** button to return to the main menu. Playback starts in the selected play mode.

Customized Settings (contd.)

Record Quality (for Voice or Music Recording)

1. Press the **MENU** button TWICE during playback.
2. Use **⏮** or **⏭** buttons to browse the **MAIN MENU**, select **SETTING** and press **▶▶▶ PLAY/PAUSE**.
3. Use **⏮** or **⏭** buttons to scroll the **SETTING** options.
4. Select **RECORD QUALITY (Hi-Mid*-Lo)**, press **▶▶▶ PLAY/PAUSE** to confirm the desired selection.
5. Press **MENU** button to return to the main menu.

Record Quality

Quality Hi:	Recording bit rate at MP3 128 kbps (High)
Quality Mid*:	Recording bit rate at MP3 64 kbps (Medium)
Quality Lo:	Recording bit rate at MP3 32 kbps (Low)

Note: (*) indicates default setting

Backlight

1. Press the **MENU** button TWICE during playback.
2. Use **⏮** or **⏭** buttons to browse the **MAIN MENU** and select **SETTING** and press **▶▶▶ PLAY/PAUSE**.
3. Select **Backlight** option and then use **⏮** or **⏭** to scroll the backlight options: **OFF, 5, 10*, 15, 20 seconds** or **Always On** and press **▶▶▶ PLAY/PAUSE** to confirm the selection.
4. Press **MENU** button to return to the main menu.

Backlight options

Always On:	Backlight remains ON.
5~20 sec.:	Backlight is illuminated for the set time (5-20sec.)
OFF:	Backlight remains OFF.

Notes: 10 seconds is default setting.
The higher the value selected the more the battery life will be reduced as the backlight consumes a higher level of power when it is ON.

Customized Settings (contd.)

Contrast

1. Press the **MENU** button TWICE during playback.
2. Use **⏮** or **⏭** buttons to browse the **MAIN MENU**, select **SETTING** and press **▶▶▶ PLAY/PAUSE**.
3. Select **CONTRAST** option and then use **⏮** or **⏭** to adjust the contrast value (from 1~10, 5 is the default setting), press **▶▶▶ PLAY/PAUSE** to confirm the selection.
4. Press **MENU** button to return to the main menu.

Information (Disk Usage / Number of Files / Firmware Version)

1. Press the **MENU** button TWICE during playback.
2. Use **⏮** or **⏭** buttons to browse the **MAIN MENU**, select **SETTING** option and press **▶▶▶ PLAY/PAUSE**.
3. Select **INFORMATION** option to view the Disk Usage / Number of Files / Firmware Version in the unit.
4. Press **MENU** button to return to the main menu.

Information

1.5GB AVAILABLE ON
2.0GB HDD
NO. OF FILES 168
FIRMWARE v0.0.38

Factory Default

1. Press the **MENU** button TWICE during playback.
2. Use **⏮** or **⏭** buttons to browse the **MAIN MENU**, select **SETTING** and press **▶▶▶ PLAY/PAUSE**.
3. Select the **FACTORY DEFAULT** options, confirm **RESTORE** or **CANCEL*** to restore all settings to the default, press **▶▶▶ PLAY/PAUSE**. **Note:** (*) indicates default setting
4. Press **MENU** button to return to the main menu.

Troubleshooting Guide & Maintenance

Troubleshooting Guide

Many potential problems can be resolved without calling a service technician. If something seems to be wrong with this product, check the following before calling us.

The player cannot be switched on

- Check if the AC adapter is disconnected.
- Check if the built-in battery is exhausted.
- Check if the HOLD key is switched OFF.

No sound or the sound quality is poor

- Check if the volume is set too low.
- Check if the earphone is plugged in properly.

Sound skips during playback

- Check if the built-in battery is exhausted.
- Check if the music file is bad encoded.
- If there are any bad sectors on the hard disk the sound will skip during playback.

The battery runs out fast

- The built-in battery is probably dead. It will need replacement.
Replacement should be carried out by qualified personnel only.
NEVER disassemble the product for this purpose.

The unit does not play for 10 hours

- 10 hours of playback is based on MP3 files encoded at a bit rate of 128 kbps. Power consumption is minimised under this condition since the unit accesses the hard disk only once every 28 minutes. Higher bit rate increase the access and power consumption leading to less playback time.

Recorded voice files cannot be seen from display (after renaming them)

- The file names of recorded music/voice files are automatically generated by the player and are managed separately from downloaded music. Whilst renaming them you have to move them to the VOICE folder, under the ROOT FOLDER.

Troubleshooting Guide & Maintenance (contd.)

Voice Recording is not possible

- Check if the HOLD key is switched OFF.

System crash when the unit is in operation

- This may occur within a strong magnetic field. Take the unit away from the magnetic field. Perform a hard reset, gently poke a paper clip or a pin (not a pencil) into the RESET Hole on the top (near by the HOLD switch) of the unit to reboot the system.

Maintenance

Moisture condensation

If condensation forms inside the unit the unit may not function properly.

In the following cases, condensation may form inside the unit.

- Shortly after turning on a heater.
- When the unit is placed in a room where there is excessive steam or moisture.
- When the unit is moved from a cool place to a warm place.

To remove condensation:

Leave the unit for approximately 1 hour. The condensation should evaporate and unit will work properly.

Cleaning

When the unit becomes dirty

Clean it with a soft cloth. When the unit is excessively dirty, use a soft cloth dampened in water (external surfaces only).

Clean the plugs and the connecting sockets

If the plugs or sockets are dirty, noise may be heard. Cleaning will prevent noise.

Caution! Do not use chemicals for cleaning (petrol, paint thinner and etc.). It may damage the cabinet finish. Do not apply oil to the inside of the unit. It may cause the unit to malfunction.

Product Specifications

As a part of our policy of continuous improvement. Goodmans reserves the right to make design and specification changes for product improvement without prior notice. The performance specification figures indicated are nominal values. There may be some deviations from these values in individual units.

Model:	GMP32000B or GMP32000S
Internal Memory:	1-inch, 2.2GB Hard Disk
Supported Digital Audio Playback Formats:	MPEG1, 2, 2.5 Layer 3 with Bit Rate 8-320 kbps and VBR WMA, supports PDDRM (WMA-9) Sampling Frequency: 8-48 KHz
File System:	FAT32 for Hard Disk
Display:	128x64 Mono LCD, with Blue Backlight
Voice Recording Bit Rate:	32 kbps (Low), 64 kbps (Mid), 128 kbps (High)
Input/Output Connections:	Earphone USB 2.0 High Speed Built-in Microphone DC-In 5 Volts
Headphone:	Frequency response: 20Hz to 20KHz Maximum Output Power: 5mW per channel on 32Ω @ 3.3V
Power Source:	DC 5V/AC Adapter (AC 230V, 50Hz)
Built-in Battery:	1000mAh Lithium Rechargeable Battery approx. 3.5 hours (fully charged, when using the AC adapter included with the unit)

** Specifications are subject to change without notice.*