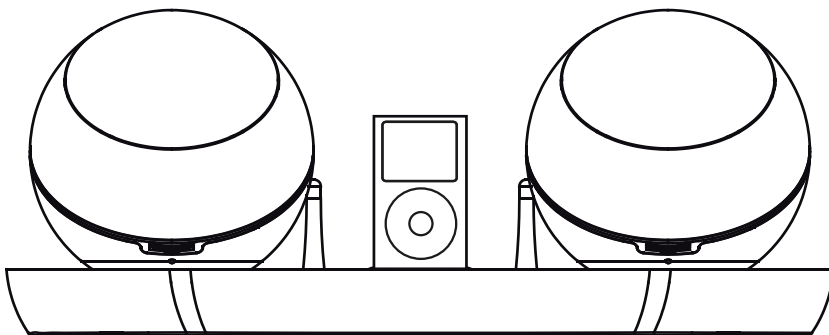


Goodmans

GSPK28WIP

Wireless Speaker System with iPod Dock

User Guide



IMPORTANT: Please read all instructions carefully before use and keep for future reference.

Introduction

Thank you for choosing this Wireless Speaker System with iPod Dock. Not only can you listen to all your favourite tracks on your iPod, but you can also connect other auxiliary devices to it.

It's really simple to use; you can fully operate your iPod directly from the control panel or from the Remote Control.

Throughout this User Guide, the Wireless Speaker System with iPod Dock will be referred to as the Speaker System.

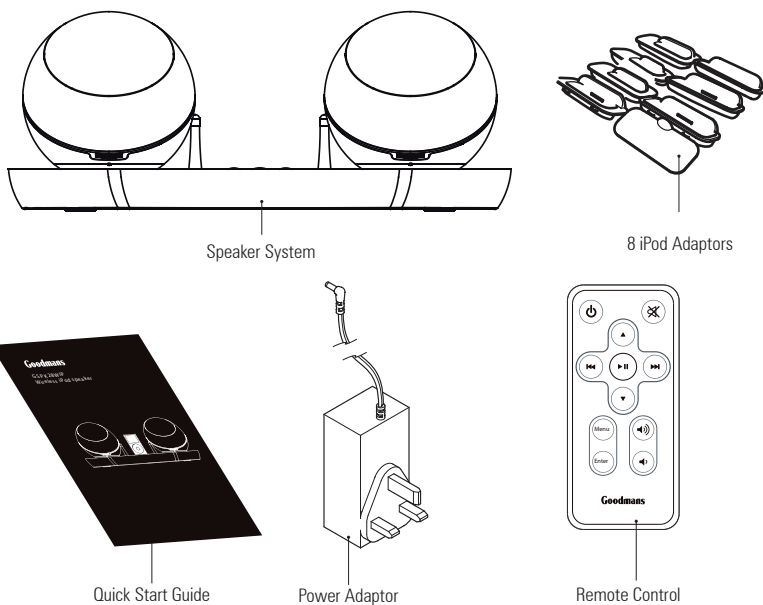
Safety is important

Use of any electrical equipment should be undertaken with care. Please read the safety section on pages 13 and 14 before using this Speaker System. This appliance is for household use only.



An audio system that allows docking of an iPod and which fully supports the iPod menu system.

What's in the box?



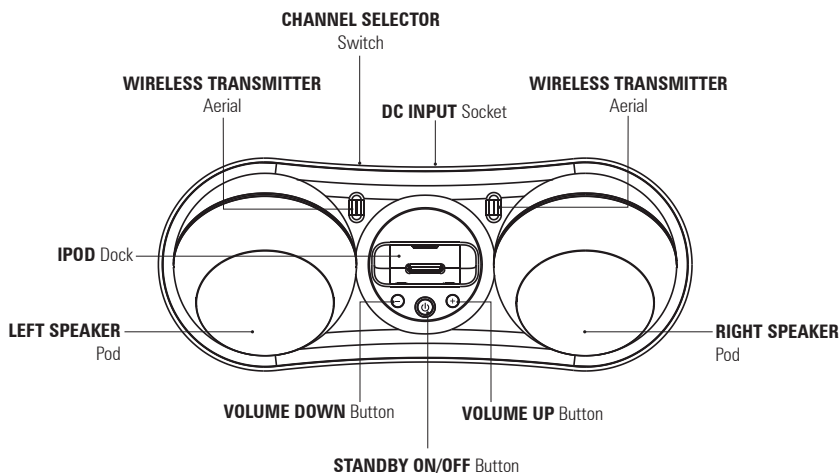
The above images are for illustrative purposes only and may differ to the items supplied.

Contents

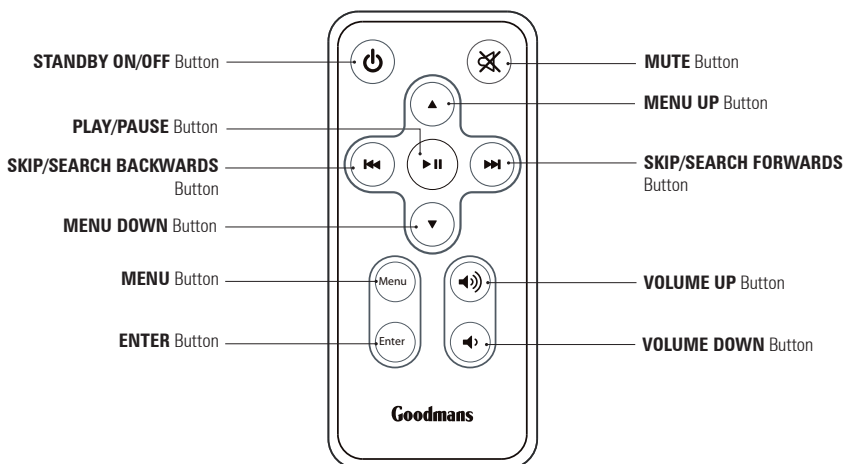
01 Your Speaker System	4	06 Removing The Batteries	10
02 Getting Started.....	5	07 Troubleshooting.....	11
03 Basic Functions	7	08 Specifications.....	12
04 Using Your iPod	8	09 Warnings.....	13
05 Using The Auxillary Input.....	9	10 Guarantee	15

01 Your Speaker System

Front view

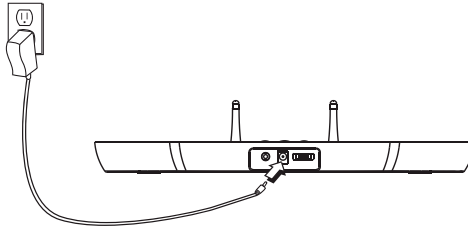


Remote Control



1

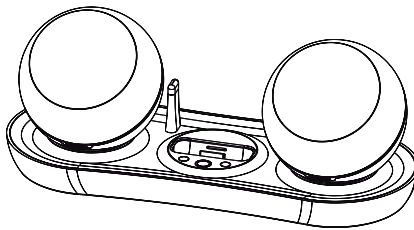
Connecting up



Connect the power adapter to the DC IN socket on the back of the Speaker System.
Then connect the power adapter to the mains supply and switch it on.

2

Charging the speaker pods



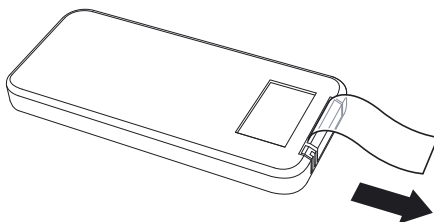
Place the speaker pods onto the Speaker System base to begin charging the internal lithium batteries.

DON'T FORGET! When the speakers are charging the LED indicator will turn red. When they are fully charged, the LED will turn green.

3

The remote control

The remote control is supplied with a safety tab fitted. To use the remote control, simply pull out the tab as shown.

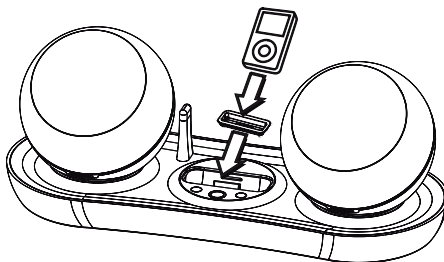


DON'T FORGET! When replacing the battery make sure that you use the same size and type.

DON'T FORGET! To prevent the battery from becoming exhausted when the remote control is not in use, ensure that it is stored carefully so that other objects are not able to contact and operate the buttons.

4

Docking an iPod



Select the correct iPod adaptor for your iPod and place it into the dock area. If none of the adaptors are suitable, use the adaptor that was supplied with your iPod. Place your iPod carefully so that it sits in the iPod adaptor.

DON'T FORGET! Your iPod will charge when it is docked with the Speaker System.

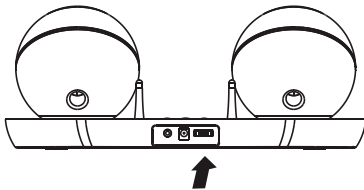
Switching On

- 1 To turn the Speaker System On, press the **STANDBY** button.
- 2 Slide the rotary controls on both Speaker Pods to the right to turn them On.

DON'T FORGET! Some noise or interference may be heard briefly when turning on the Speaker Pods. This is normal and only happens when the base unit and the Speaker Pods are pairing with each other.

Channel Selector Switch

Use the channel switch on the rear of the Speaker System to obtain the best reception for the Speaker Pods.



DON'T FORGET! If you hear some interference through the Speaker Pods, try using a different channel.

Adjusting the Volume

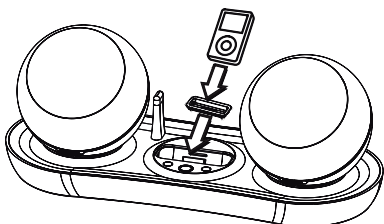
There are three different places where you can adjust the volume;

- 1 On the Speaker System using the **VOLUME UP** and **VOLUME DOWN** buttons. This will adjust the volume of both speakers.
- 2 On the remote control using the **VOLUME UP** and **VOLUME DOWN** buttons. This will also adjust the volume of both speakers.
- 3 On each of the Speaker Pods individually using the rotary control. Rotate it to the right to turn the volume up and to the left to turn the volume down.
- 4 You can also press the **MUTE** button on the remote control to turn the sound off. Press the **MUTE** button again to turn the sound back on.

DON'T FORGET! If an audio signal is not received after 3 minutes the Speaker System will automatically switch to standby mode to preserve power.

04 Using your iPod

Most iPod's can be connected to the Speaker System allowing all your favourite songs to be played through the Speaker System's speakers.



- 1 To connect an iPod to the Speaker System, select the compatible adaptor from one of the 8 iPod adaptors supplied.

1. iPod nano (2G)	2. iPod nano
3. iPod nano (3G)	4. Mini
5. iPod with video (60G)	6. iPod with video (30G)
7. iPod with video (10G/30G)	8. iPod with video (40G/60G)

DON'T FORGET! If your iPod is not compatible with any of the supplied iPod adaptors, use the adaptor supplied with your iPod.

- 2 Place the iPod adaptor into the recess on the top of the Speaker System and then insert your iPod into the adaptor.
- 3 To disconnect the iPod, turn it off and disconnect it from the dock.

DON'T FORGET! Your iPod will charge while docked when the Speaker System is in Standby Mode.

iPod Controls

- 1 Press the **STANDBY** button to turn the Speaker System on.
- 2 To start playback, press the **PLAY/PAUSE** button.
- 3 To pause playback, press the **PLAY/PAUSE** button again.
- 4 Press the **◀◀** button to go to the previous track, and the **▶▶** button to go to the next track.
- 5 Press and hold the **◀◀** button to search backwards in a track and press and hold the **▶▶** button to search forwards in a track.

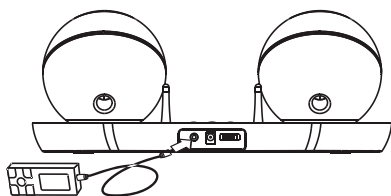
iPod Menu Navigation

- 1 To access the iPod menu system, press the **MENU** button.
- 2 Use the **▲** or **▼** buttons to highlight the menu options.
- 3 Press the **ENTER** button to select a menu option.

The Speaker System has an auxillary connection, so that you can connect other audio devices to it.

You will need a suitable connection lead (not supplied) with a 3.5mm connector.

- 1 To connect an auxillary device to the Speaker System, press the **STANDBY** button to turn it off.
- 2 Use the connection lead to connect between the Speaker System and the auxillary device.



- 3 Press the **STANDBY** button to turn the Speaker System on.

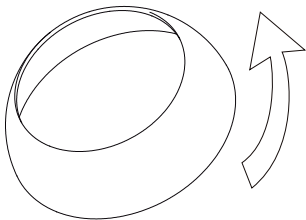
DON'T FORGET! Your iPod must be removed from the Speaker System when using an auxillary device.

06 Removing the batteries

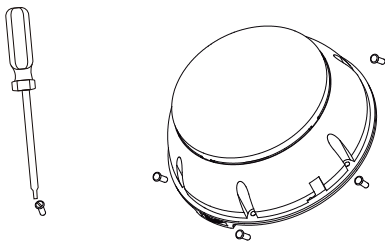
When the batteries inside the Speaker Pods have reached the end of their life, please dispose of them in a responsible manner. The information below shows you how to remove them.

DON'T FORGET! Do not remove the rechargeable batteries for any other reason than to replace or dispose of them.

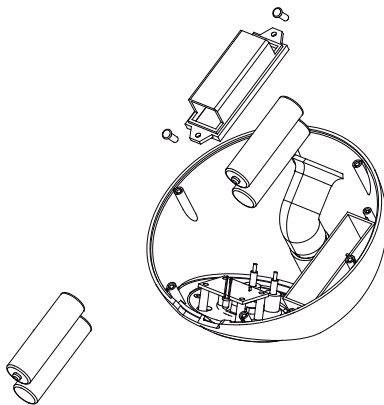
- 1 Hold the outer trim of the Speaker Pod firmly and twist in an anti clockwise direction.



- 2 Remove the six cross head screws.



- 3 Undo the two battery cover screws, and remove the rechargeable lithium batteries.



DON'T FORGET! Do not replace the rechargeable batteries with standard batteries. This may cause the charging circuit to malfunction and result in damage to the Speaker Pods.

The information shown here is intended only as a guide for the disposal and replacement of rechargeable batteries.

Problem	Possible Cause	What to do
No Power	<ol style="list-style-type: none"> 1. The adaptor is not plugged into the wall socket. 2. The wall socket is not turned on. 	<ol style="list-style-type: none"> 1. Ensure the adaptor is plugged into the wall socket. 2. Turn on the power at the wall socket.
The Speaker System is not responding to the Remote Control	<ol style="list-style-type: none"> 1. The Speaker System is switched off at the wall socket. 2. The Remote Control is not directed at the Speaker System. 3. The front of the Speaker System is obstructed. 4. The Remote Control battery is exhausted. 5. The Remote Control battery is incorrectly inserted. 	<ol style="list-style-type: none"> 1. Turn on the power at the wall socket. 2. Direct the Remote Control towards the Speaker System. 3. Ensure there are no objects obstructing the Speaker System. 4. Replace the battery in the Remote Control. 5. Ensure the battery is correctly inserted into the Remote Control.
No sound is heard	<ol style="list-style-type: none"> 1. The volume is on the minimum setting. 2. The volume is muted. 3. The Speaker Pods are switched off. 	<ol style="list-style-type: none"> 1. Increase the volume. 2. Press the MUTE button to restore the sound. 3. Turn the rotary control on the Speaker Pods to the On position.
All buttons fail to function	<ol style="list-style-type: none"> 1. A hardware error has occurred. 	<ol style="list-style-type: none"> 1. Perform a hardware reset by removing the power from the rear of the Speaker System. Wait 60 seconds and then switch it back on again.

Model Number	• GSPK28WIP
Power Supply	• 100-240V AC 50 - 60Hz
Power Consumption	• 15.8 Watts
Power Output	• 2 x 2 Watts RMS
Recharge Time	• Approx 3 Hours
Wireless Speaker Pods Operating Distance	• Approx 20 - 30 Metres
Speaker Impedance	• 4 Ohms

IMPORTANT: Due to continual revision and improvements to our products design, specifications are subject to change without notice.

WEEE



This Speaker System is labelled in accordance with European Directive 2002/96/EG concerning used electrical and electronic appliances (Waste Electrical and Electronic Equipment - WEEE). The guideline determines the framework for the return and recycling of used appliances.

Sound levels

Your hearing is very important to you and to us, so please take care when using this Speaker System. It is strongly recommended that you follow the listed guidelines in order to prevent possible damage or loss of hearing.

Establish a safe sound level

Over time your hearing will adapt to continuous loud sounds and will give the impression that the volume has in fact been reduced. What seems normal to you may in fact be harmful. To guard against this **before your hearing adapts**, set the volume to a low level.

Slowly increase the level until you can hear comfortably and clearly and without distortion. Damage to your hearing is accumulative and is irreversible. Any ringing or discomfort in the ears indicates that the volume is too loud.

Once you have established a comfortable listening level, **do not increase the sound level**.

General Safety

This Speaker System has been designed and manufactured to meet European safety standards, but like any electrical equipment, care must be taken if you are to obtain the best results and safety is to be assured.

Do read these operating instructions before you attempt to use the Speaker System.

Do ensure that all electrical connections (including the mains adaptor, extension leads and interconnections between pieces of equipment) are properly made in accordance with the manufacturer's instructions.

Switch off and remove the mains adaptor when making or changing any connections.

Do consult your dealer if you are ever in doubt about the installation, operation or safety of your Speaker System.

Don't continue to operate the Speaker System if you are ever in doubt about it working normally, or if it is damaged in any way. Switch it off withdraw the mains adaptor from the mains and consult your dealer.

Don't remove any fixed covers as this may expose you to dangerous voltages.

Don't leave the Speaker System switched On when it is unattended for long periods of time, unless it is specifically stated that it is designed for unattended operation or has a standby mode.

Make sure that other people in your household are conversant with the Speaker System.

Don't obstruct the ventilation vents on the Speaker System, for example with curtains or soft furnishings.

Overheating will cause damage and shorten the life of the product.

Don't allow electrical equipment to be exposed to rain or moisture.

Store the Speaker System in a clean, dry environment.

Do not use any cleaning solutions on the Speaker System.

Electrical Safety

Read these electrical safety instructions carefully before connecting the power adaptor to the mains supply.

This Speaker System is supplied with a mains adaptor which has been designed for indoor use only.

The mains adaptor is a sealed unit. There are no user serviceable parts inside and it does not require any electrical adjustments.

Do not attempt to open the mains adaptor.

If the mains adaptor becomes damaged, or fails to operate your Speaker System, it must be replaced and disposed of in a safe and environmentally protective way.

The mains adaptor is designed to operate on 100 - 240VAC 50 - 60Hz supply. Connecting it to any other power sources may damage the mains adaptor and the Speaker System.

The Speaker System is guaranteed for twelve months from the date of original purchase. If any defect due to faulty materials or workmanship, contact the Goodmans Helpline. Have your receipt of purchase on hand.

The guarantee is subject to the following provisions:

- It is only valid within the boundaries of the country of purchase.
- The product must be correctly installed and operated in accordance with the instructions contained in this User Guide.
- This Speaker System must be used solely for domestic purposes.
- The guarantee will be rendered invalid if the Speaker System is re-sold or has been damaged by inexpert repair.
- The manufacturer disclaims any liability for incidental or consequential damages.
- The guarantee is in addition to, and does not diminish, your statutory or legal rights.

Goodmans

GSPK28WIP-221108-Rev1