

GDVD67W3LCD

Portable DVD Player

Quick Guide

Goodmans

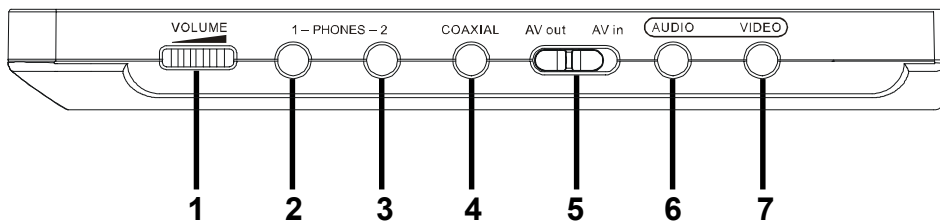
IMPORTANT INFORMATION

Package Contents

- | | |
|----------------------------------|-------------------|
| 1. DC Adapter | 4. Video Cable |
| 2. Car-cigarette-lighter Adapter | 5. Battery |
| 3. Audio Cable | 6. Remote Control |

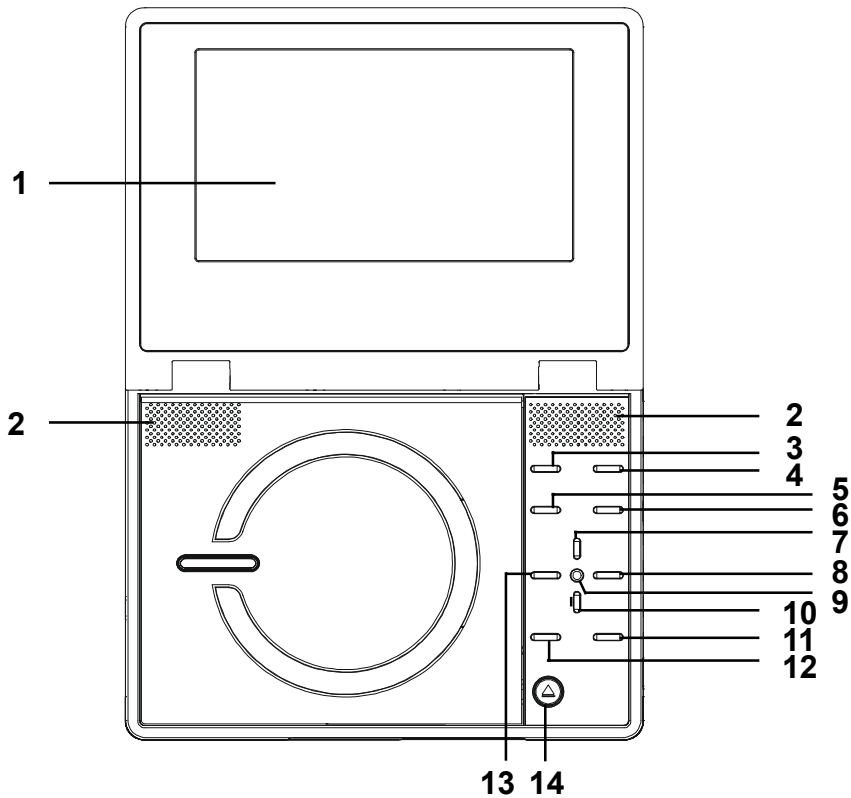
Getting to Know Your Portable DVD Player

SIDE PANEL



1. Volume Control
2. headphone socket
3. headphone socket
4. Coaxial output socket (DIGITAL AUDIO)
5. AV out/AV in switch
6. Audio output/input socket
7. Video output/input socket

FRONT VIEW



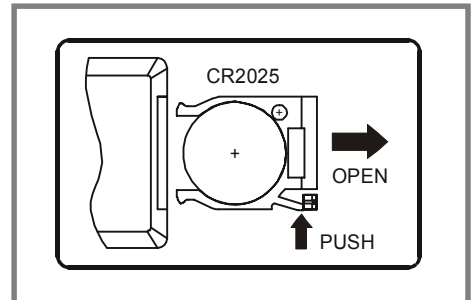
- | | | | |
|-----|-------------------|-----|--------------------|
| 1. | LCD screen | 2. | SPEAKERS |
| 3. | LCD button | 4. | SETUP button |
| 5. | MODE button | 6. | MENU button |
| 7. | PAUSE/UP button | 8. | F.FWD/RIGHT button |
| 9. | PLAY/SEL. button | 10. | STOP/DOWN button |
| 11. | NEXT button | 12. | PREVIOUS button |
| 13. | F.BWD/LEFT button | 14. | OPEN button |

BATTERY INSTALLATION FOR THE REMOTE CONTROL

Insert the battery and match the (+) and (-) on battery to the marks inside the battery compartment.

First-time use:

Remember to remove the insulating Mylon strip from the battery compartment.



Notes:

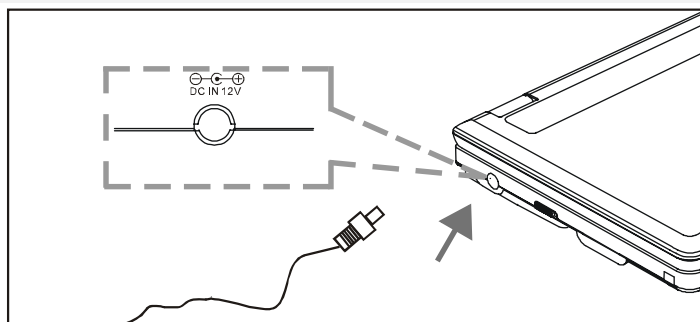
1. If the remote control unit fails to work even when it is operated near the player, replace the battery.
2. Use a 3V lithium battery. (CR2025)

Quick Operation Guide

STEP 1. Connect it to Power (A)

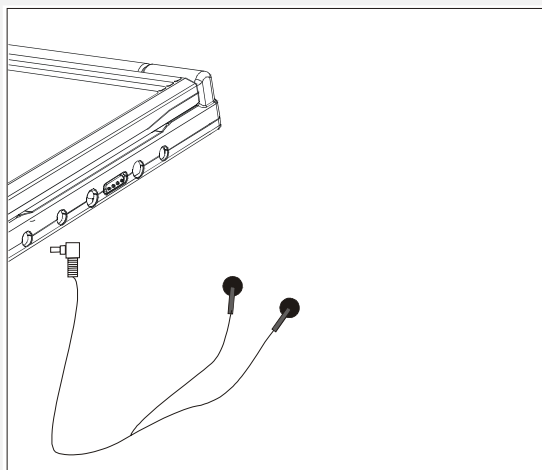
Connect the supplied adaptor to the DC IN socket on the left side of the portable DVD player.

(A)



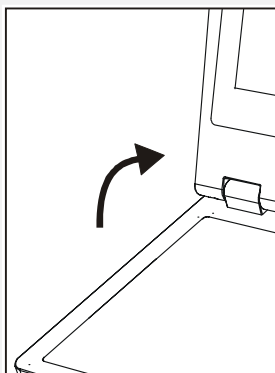
STEP 2. Connect headphones.

(B)



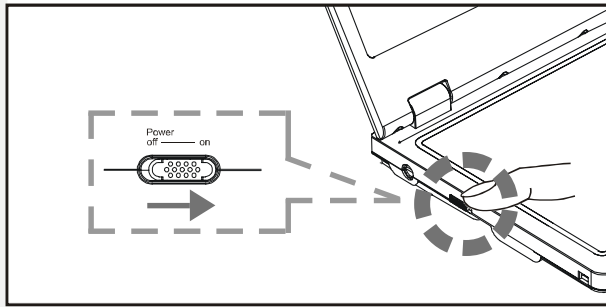
STEP 3. Open the display panel. (C)

(C)



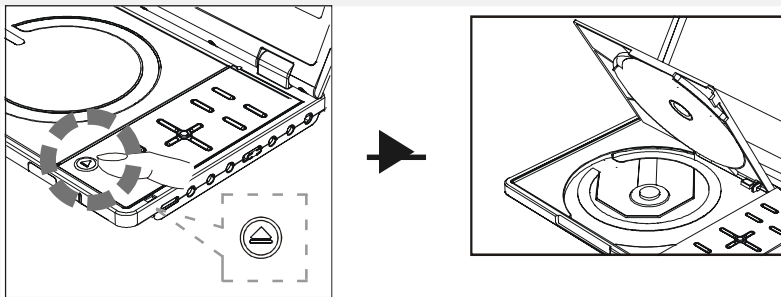
STEP 4. Move POWER switch to the ON position to turn on the portable DVD player. (D)

(D)



STEP 5. Press OPEN button to open the DVD Door. (E)

(E)

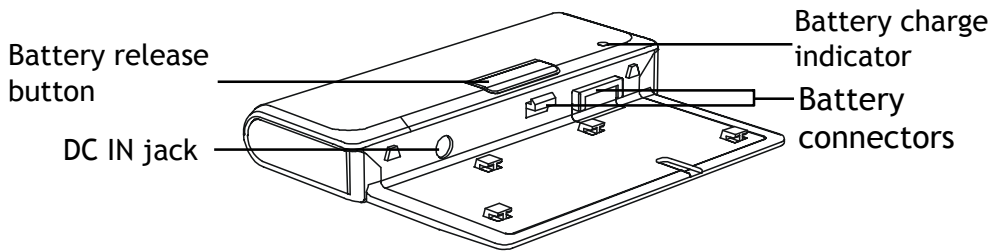


STEP 6. Gently hold the edge of the disc, then place it in the centre and push gently until the disc is securely located with the printed side up.

STEP 7. Close the DVD Door.

STEP 8. Press PLAY/SEL. to play the disc.

Using the Battery Pack



Before using the battery pack, make sure to charge it. You can charge the battery pack directly or charge it while the battery pack attached to this Portable DVD player.

Note: Battery will NOT charge while using the unit.

A. CHARGE THE BATTERY PACK DIRECTLY

STEP 1. Connect the AC adapter(12V, 1.25A) to the DC IN socket on the left side of the battery pack and a mains power socket. (as shown in figure (A))

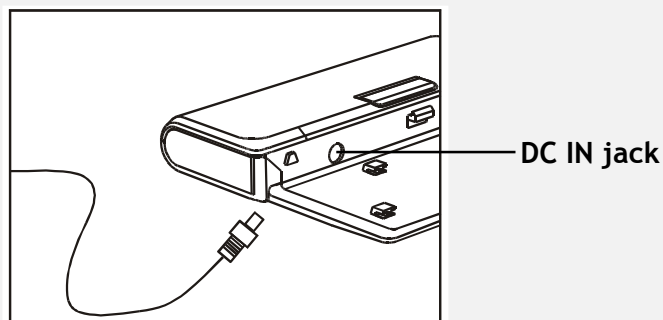
STEP 2. The battery charge indicator will turn red and start charging.

STEP3. When the battery pack is fully charged, the battery charge indicator will turn green.

Note:

1. Because of the characteristics of the battery, when the battery charge indicator turns green the battery pack is not necessarily fully charged. Please continue charging the battery pack for another hour.
2. The total charge time for the battery pack is approximately 3.5 hours.
3. When the battery pack is fully charged, (depending on use) it will last for approximately 2.5 hours.

(A)



B. CHARGE THE BATTERY PACK WHILE THE BATTERY PACK ATTACHED TO THE PORTABLE DVD PLAYER

STEP 1. Please align the portable DVD player's battery connectors with the battery pack's battery connectors. Then attach the battery pack to the portable DVD player. (as shown in figure (B))

Note:

1. Please turn Power off when attaching or removing the battery pack.
2. If you want to remove the battery pack, press battery release button, then slowly remove it from the portable DVD player by sliding it carefully away from the player.

STEP 2. Connect the AC adapter(12V, 1.25A) to the DC IN socket on the left side of the portable DVD player and a household power outlet. (as shown in figure (C) shown)

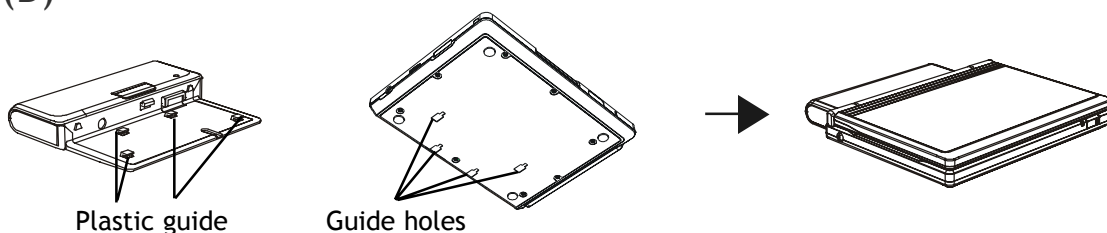
STEP3. Battery charge indicator will turn red and start charging.

STEP4. When the battery is fully charged, the indicator will turn green.

Note:

1. The battery pack is not charged while the portable DVD player is turned on.
2. Please use the specific power adapter (12V, 1.25A) to charge the battery pack.

(B)



(C)

