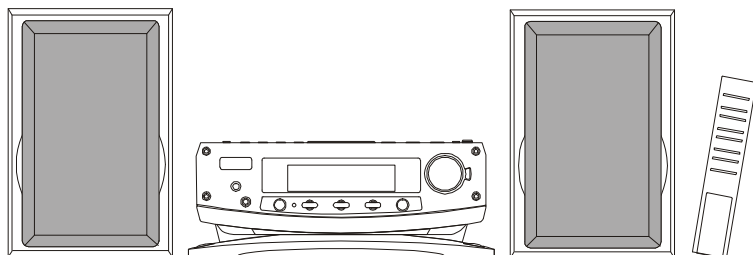


Goodmans

MICRO HI-FI SYSTEM

MICRO 1109



CE

OPERATING INSTRUCTIONS

TABLE OF CONTENTS

INTRODUCTION

This instruction manual is important to you. Please read it. In a short time it shows exactly how to connect, operate, and adjust this unit for best performance. It can save you money. It shows simple things to do and check before you call for help and save the cost of unnecessary service or call out charge.

Table of controls.....	1
Important Safeguards.....	2
Important Notes.....	3
Important Notes.....	4
Identification of Controls.....	5
Features Controls and Remote Control.....	6
Putting the Batteries into the Remote Control Unit.....	6
Putting the Batteries into the Back-up Battery Box.....	6
Installing the Speaker Wire to the Speaker terminals.....	7
Operating the unit, Power / Standby and Clock Setting.....	7
Timer Setting, Snooze Setting and To set Sleep Function.....	7
Radio Operation.....	8
Listening to Compact Disc.....	9
Reset Function, Mode / Remain Setting and Preset EQ.....	10
Mute Play, Aux Play.....	10
Listening to the music by using Headphone.....	10
Memory backup.....	10
Compact Disc.....	11
CD Display Window.....	12
Specification.....	12

Save the carton and packing material; they will be useful if you ever have to transport the unit.

Pack contents:

- 1 x Goodmans Micro 1109
- 1 x remote control
- 2 x loudspeakers
- 1 x owner's manual

Please retain all packaging material for future transportation of the unit or in the unlikely event that the unit needs to be returned for service.

IMPORTANT SAFEGUARDS

For your own safety read following instructions carefully before attempting to connect this micro system to the mains.

Mains Supply: 230V ~ 50Hz - AC only

This unit is designed to operate on a **230V~50Hz** supply only. Connecting it to other power sources may damage it. Ensure that the supply corresponds to the information on the rating label on the bottom of the unit.

This micro system may be fitted with a non-rewireable plug. If it is necessary to change the fuse in a non-rewireable plug the fuse cover must be refitted. If the fuse cover becomes lost or damaged, the plug must not be used until a replacement, available from the manufacturer, is obtained. It is important that the colour of the replacement fuse cover corresponds with the colour marking on the base of the plug.

If the plug needs to be changed because it is not suitable for your socket, or becomes damaged, it should be cut off and an appropriate plug fitted following the wiring instructions below. The plug must then be disposed of safely, as insertion into a 13A socket is likely to cause an electrical hazard.

IMPORTANT

The wires in the mains plug should be connected as shown in the diagram.

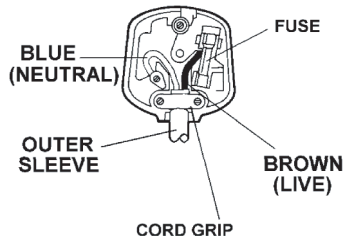
The colours of the wires in the mains lead of the unit may not correspond with the coloured markings identifying the terminals in your plug. Connect them as follows:-

The wire which is coloured blue must be connected to the terminal which is marked with the letter 'N' or coloured black.

The wire which is coloured brown must be connected to the terminal which is marked with the letter 'L' or coloured red.

There should be no connection to the earth terminal of your plug.

If a 13 Amp (BS 1363) Plug is used, a 3 Amp Fuse must be fitted, or if any other type of Plug is used a 3 Amp or 5 Amp Fuse must be fitted, either in the Plug or Adaptor, or on the Distribution Board.



This symbol means that this unit is double insulated. An earth connection is not required.

DANGER

LASER SAFETY

CAUTION: USE OF CONTROLS OR ADJUSTMENTS OR PERFORMANCE OF PROCEDURES OTHER THAN SPECIFIED HEREIN MAY RESULT IN HAZARDOUS RADIATION EXPOSURE.

INVISIBLE LASER RADIATION WHEN OPEN AND INTERLOCK FAILED OR DEFEATED. AVOID DIRECT EXPOSURE TO LASER

This unit employs a laser. Only a qualified service person should remove the cover or attempt to service



CAUTION

To prevent electric shock, disconnect from the mains before removing cover. No user serviceable parts inside. Refer servicing to qualified service personnel.

To achieve the utmost in enjoyment and performance, please read this manual carefully before attempting to operate the unit in order to become familiar with its features, and assure you years of faithful, trouble free performance and listening pleasure.

Important Notes

- * The safety and operating instructions should be retained in a safe place for future reference.
- * Avoid installing the unit in locations described below:
 - Places exposed to direct sunlight or close to heat radiating appliances such as electric heaters.
 - On top of other stereo equipment that radiate too much heat.
 - Places lacking ventilation or dusty places.
 - Places subject to constant vibration.
 - Humid or moist places.
- * Make sure not to obstruct the ventilation opening.
- Operate controls and switches as instructed in the manual.
- * Before turning on the power for the first time, ensure the power cord is properly installed.
- * Store your tapes or CD in a cool area to avoid damage from heat.

For safety reasons, do not remove any covers or attempt to gain access to the inside of the product. Refer any servicing to qualified personnel.

Do not attempt to remove any screws, or open the casing of the unit; there are no user serviceable parts inside, refer all servicing to qualified service personnel.



CAUTION : TO REDUCE THE RISK OF ELECTRIC SHOCK DO NOT REMOVE COVER(OR BACK), NO USER SERVICEABLE PARTS INSIDE, REFER SERVICING TO QUALIFIED SERVICE PERSONNEL.



DANGEROUS VOLTAGE

Conductor dangerous voltage, that may be of sufficient magnitude to constitute a risk of electric shock to persons is present within this product's enclosure.



ATTENTION

The owner's manual contains important operating and maintenance instructions, for your safety, it is necessary to refer to the manual.

WARNING : TO PREVENT FIRE OR SHOCK HAZARD, DO NOT EXPOSE THIS APPLIANCE TO RAIN OR MOISTURE.

CAUTION : TO PREVENT ELECTRONICAL SHOCK, MATCH WIDE BLADE PLUG TO WIDE SLOT, FULLY INSERT.

Note:

This unit will become warm when used for a long period of time. This is normal and does not indicate a problem with the unit.

This CD player includes micro-processors which may malfunction as a result of external electrical interference or noise. If the CD player is not working properly, disconnect the power source and wait for a few minutes and then plug the unit back in.

IMPORTANT NOTES

Hearing is very important to you and to us so please take care when operating this equipment. It is strongly recommended that you follow the listed guidelines in order to prevent possible damage or loss of hearing.

ESTABLISH A SAFE SOUND LEVEL

- Over time your hearing will adapt to continuous loud sounds and will give the impression that the volume has in fact been reduced. What seems normal to you may in fact be harmful. To guard against this BEFORE YOUR HEARING ADAPTS set the volume at a low level.
- Slowly increase the level until you can hear comfortably and clearly and without distortion.
- Damage to your hearing is accumulative and is irreversible.
- Any ringing or discomfort in the ears indicates that the volume is too loud.

Once you have established a comfortable listening level, DO NOT INCREASE THE SOUND LEVEL FURTHER.

The following list of typical sound levels may assist you in recognising just how loud you have set the volume level.

DECIBEL

<u>Level dB</u>	<u>Example</u>
-----------------	----------------

30dB	Quiet library, soft whisper.
40	Living room, fridge freezer bedroom away from traffic.
50	Normal conversation, quiet office, light traffic.
60	Electric sewing machine.
70	Vacuum cleaner, hair dryer, noisy restaurant.

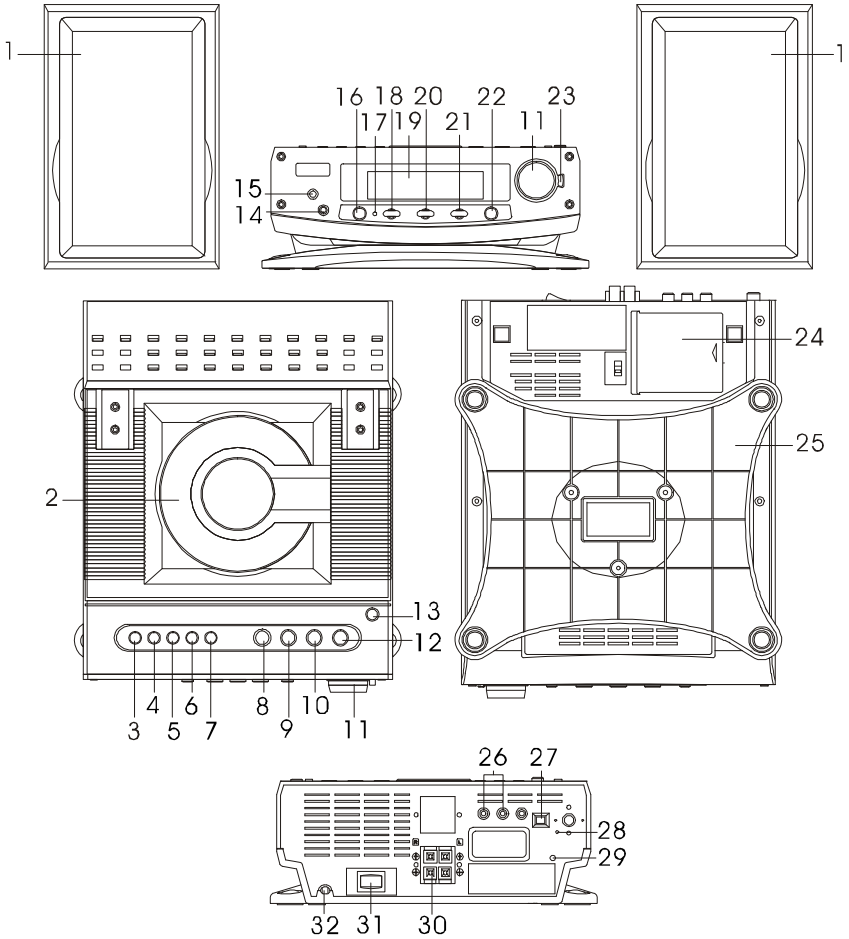
THE FOLLOWING NOISE CAN BE HARMFUL UNDER CONSTANT EXPOSURE

80dB	Average city traffic, alarm clock buzzer at 1 Metre, food mixer.
90	Motorcycle, heavy goods vehicle, petrol lawn mower.
100	Pneumatic drill, chain saw, garbage truck, discotec/night-club.
120	Rock band concert, thunderclap.

PERMANENT LOSS OF HEARING

140	THRESHOLD OF PAIN Gunshot 2 feet away.
180	Rocket Launching pad.

IDENTIFICATION OF CONTROLS

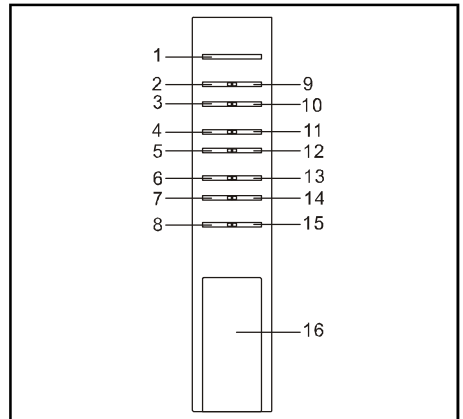


FEATURES AND CONTROLS

1. SPEAKER
2. CD DOOR
3. FM MODE (STEREO / MONO) BUTTON
4. DISPLAY / REMAIN BUTTON
5. MEMORY / C-ADJ. BUTTON
6. REPEAT / MEMORY UP BUTTON
7. TIMER / SLEEP BUTTON
8. TUNING / SKIP / SEARCH REV. BUTTON
9. TUNING / SKIP / SEARCH F.F. BUTTON
10. STOP / BAND BUTTON
11. VOLUME KNOB
12. PLAY / PAUSE BUTTON
13. CD DOOR (OPEN / CLOSE) BUTTON
14. PHONES SOCKET
15. IR SENSOR
16. POWER STANDBY / ON BUTTON
17. POWER STANDBY LED INDICATOR
18. CD FUNCTION SELECT BUTTON
19. LCD DISPLAY WINDOW
20. TUNER FUNCTION SELECT BUTTON
21. AUX FUNCTION SELECT BUTTON
22. PRESET EQ BUTTON
23. MUTE BUTTON
24. MEMORY BACK-UP BATTERY DOOR
25. UNIT STAND
26. AUX (LEFT & RIGHT) JACK
27. AM ANTENNA TERMINALS
28. FM ANTENNA
29. RESET BUTTON
30. SPEAKER TERMINALS
31. AC POWER SWITCH
32. AC CORD

REMOTE CONTROL

1. POWER / STANDBY BUTTON
2. PLAY / PAUSE BUTTON
3. TUNING / SKIP / SEARCH REW. BUTTON
4. TIMER BUTTON
5. SLEEP BUTTON
6. RANDOM BUTTON
7. MUTE BUTTON
8. VOLUME DOWN BUTTON
9. STOP / BAND BUTTON
10. TUNING / SKIP / SEARCH F.F. BUTTON
11. FUNCTION SELECT (TUNER / AUX / CD) BUTTON
12. PRESET EQ BUTTON
13. REPEAT / MEMORY UP BUTTON
14. SNOOZE BUTTON
15. VOLUME UP BUTTON
16. BATTERY DOOR

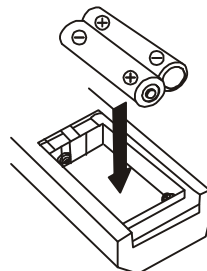


PUTTING THE BATTERIES INTO THE REMOTE CONTROL UNIT

Press down of the compartment cover, and slide the cover off to open the compartment. Place the two (UM3), (AA), (R6) batteries in the remote control according to the polarity markings ("+" and "-") inside the compartment and on the batteries. Place the cover over the compartment, press down lightly, and push it upward until it clips into place.

NOTE : Replace all batteries at the same time. Remove the batteries if the remote control is not in use for long periods. Do not mix normal batteries with rechargeable batteries. When the batteries become weak, the remote control will not function, replace with new batteries if this happens.

** BATTERIES NOT INCLUDED **



INSTALLING THE SPEAKER WIRE TO THE SPEAKER TERMINALS

1. Speakers Connection

Extend the SPEAKER WIRES and connect them to the SPEAKER TERMINALS, the wire with white mark connect to Red terminal, the wire without white mark connect to Black terminal.

2. Power Cord Connection

Before using, connect the AC Power Cord to the AC outlet, then turn on the main switch of the unit.

OPERATING THE UNIT

PLEASE NOTE : THIS UNIT WAS TWO POWER SWITCHES. BEFORE USE PLEASE ENSURE THE SWITCH ON THE REAR OF THE UNIT IS IN THE "ON" POSITION THEN PRESS THE STANDBY BUTTON TO TURN ON THE UNIT.

You can press the POWER button on the unit (or on the remote control) to switch the unit ON and OFF. Pull the AC plug out of the wall socket if you want to switch off completely.

POWER / STANDBY

1. Press POWER button on the unit (or remote) to switch the unit on.
2. Select the sound source (CD, Radio or Aux) by pressing corresponding function key.
3. Adjust the volume with the VOLUME (UP or DOWN) button on remote or by using volume knob on the front panel.
4. Set the preset equalizer (classic, rock or pop) with the PRESET EQ button on the unit (or remote)
5. Press POWER button to switch off the unit.

CLOCK SETTING

To set the clock the unit must be in standby.

1. Press and hold MEMORY / C-ADJ. button until "24 H" shows on display.
2. Use TUNING / SKIP / SEARCH REV. or F.F. button to set time format. (12 hour or 24 hour)
3. Press MEMORY / C-ADJ button again and the hour digits will flash. Use TUNING / SKIP / SEARCH REV. or F.F. button to set the current hour.
4. Press MEMORY / C-ADJ button for a third time and the minute digits will flash. Use TUNING / SKIP / SEARCH REV. or F.F. button to set the current minute.
5. Press the MEMORY / C-ADJ. button for a final time to set the clock.

TIMER SETTING

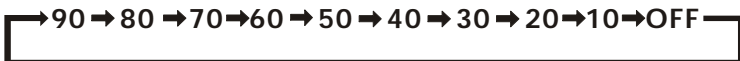
1. Press TIMER button until TIMER is shown on display,
2. Press and hold MEMORY / C-ADJ. button, and then press TUNING / SKIP / SEARCH REV. or F.F. button to adjust hour on time.
3. Press the MEMORY / C-ADJ. button. Use TUNING / SKIP / SEARCH REV. or F.F. button to adjust minutes digits of on time.
4. Press and hold "TIMER" button, "TIMER" symbol on the display will illuminate.
5. The volume level when the unit turns on is equal to last volume level set and the source is the last source listened to.

SNOOZE SETTING (for Remote Control)

After the timer has turned on the unit, the snooze button can be used to turn the unit off for FIVE minutes. After this time the unit turns on again.

TO SET SLEEP FUNCTION

1. If you want to fall asleep to music, press SLEEP button.
2. You may adjust the radio or CD player's sleep function to turn off after 90,80,70 up to 10 minutes of music. Each press of the button will cycle through each of the options as follows.



RADIO OPERATION

1. Press the TUNER button to select the Radio.
2. Select the desired waveband using the STOP / BAND button.

Manual tuning

1. To tune to a stations manually press the TUNING / SKIP / SEARCH REV. or F.F. button using repeated brief presses until the station is found.
2. If station is broadcasting in stereo and you have selected to listen in stereo using the Stereo / Mono select, button the "ST." indicator will appear on the display.
3. If there is a large amount of background noise when listening to a ststion in stereo, use the Stereo / Mono select button to listen in MONO.

Automatic tuning

1. Press and hold TUNING / SKIP / SEARCH REV. or F.F. button for second or more, then release the button. The tuner will automatically search for the first station of sufficient signal strength.
2. Repeat the above procedure if you wish to search for another station.

Programming Presets Station

You can also preset stations of your choice and store up to 10 MW and 10 FM stations in memory. To store your selected station:

1. Press the STOP / BAND button to select required waveband.
2. Tune to the required station. Using either above method.
3. Press MEMORY / C-ADJ.button
4. Press REPEAT / MEMORY UP button to select the preset number to store the station in.
5. Press MEMORY / C-ADJ. again to confirm your selection.
6. To program more stations into memory, repeat the above steps 2 to 5.
7. To change the stored preset stations, repeat the above steps 2 to 5.

Notes:

1. Storing a new station into a preset location will erase the previously stored station in that location.
2. Power off / failure or power cord disconnection will clear the memory of all preset stations. Install 3 AA size batteries into the compartment on the bottom of the unit for memory back up in this event of power loss.

Selecting Preset Stations

1. Press the STOP / BAND button to select the desired MW / FM stations.
2. Press REPEAT / MEMORY UP button to select the desired preset station number.
3. The numeric location of that preset station is displayed along with the corresponding frequency.

FM Aerial

Extend the FM aerial wire for best FM reception.

LISTENING TO COMPACT DISC (CD)

1. Open the CD door using CD DOOR (OPEN / CLOSE) BUTTON.
2. Insert the CD disc into the CD compartment, press the CD DOOR (OPEN / CLOSE) BUTTON again.
3. Press the CD button.

Playing The Entire Disc

1. Press the PLAY / PAUSE to start playback.
Playback starts with the first track. The display shows the current track number and its elapsed time.
2. To pause playback, press PLAY / PAUSE. The time elapsed indicator will flash.
3. To resume playback, press PLAY / PAUSE again.
4. To stop playback, press STOP.

Selecting A Different Track

1. Press TUNING / SKIP / SEARCH REV. or F.F. button on the unit (or remote) repeatedly until the required track number appears in the display.
2. Press PLAY / PAUSE button to start playback.

Repeat Play

1. To repeat the track you are listening to press the REPEAT button once and "REPEAT" will flash on the display.
2. To repeat all of the tracks press the REPEAT button twice and "REPEAT" shows constantly on the display.
3. To cancel repeat press repeat until "REPEAT" is removed from display.

Random Play

1. Press the RANDOM button once, and the "RANDOM" indicator will light up and the disc will start playing in random order.
2. Press STOP button or RANDOM button to exit random mode.

Stopping Play

1. Press STOP if you wish to stop playback. The total number of track and total time will now appear in the display.
2. Open the CD door on the unit to remove the CD.

Programming the CD Player

You can program upto 20 tracks to be played in any order.

1. Place the disc to be programmed in the tray. Press MEMORY / C-ADJ. button.
2. The display will show TRACK and P-01.
3. Use TUNING / SKIP / SEARCH REV. or F.F. button to select the first track to be programmed.
4. When the desired track appears on the display, press MEMORY / C-ADJ. button again.
5. The display will show TRACK and P-02.
6. Repeat this procedure to select other tracks that you wish to program into the memory.

Playing a program

1. Press PLAY / PAUSE.
2. Play starts with the first track of the program.
3. When all track have been played, the display shows the total number of tracks and the total playing time of the CD.

Erasing a program

A program is erased if you :

Press MEMORY / C-ADJ. button then STOP button when the CD is stopped or switch the unit OFF or opening the CD door.

RESET FUNCTION :

RESET

If an abnormal situation occurs in the display, press the reset button on the back of the unit.

DISPLAY/REMAIN SETTING

Press Display button changing the display as shown below.

1. In the Radio mode : Frequency display >> Clock display >> Timer
2. In the Aux mode :
Clock display >> Timer
3. In the CD mode :
(During play) Elapsed time display >> Remaining time display >> Clock display >> Timer
(During stop) Total time display >> Clock display >> Timer

PRESET EQ

To add EQ effect to the sound.

Press the PRESET EQ button, and LCD indicator will display CLASSIC or ROCK or POP wording.



MUTE

1. Press the MUTE button, "MUTE" will show on the display the audio output will be muted.
2. Press MUTE button again, "MUTE" will disappear from display the audio output will resume.

AUX PLAY

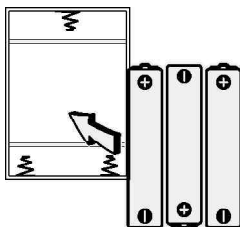
1. Press the AUX button once and the "AUX" indicator will show on the display.
2. Use a cable with RCA plugs to connect audio equipment (turn table, players, VCRs, etc.)

LISTEN TO THE MUSIC USING HEADPHONES

A stereo headphone jack is provided for private listening. To listen to the unit with headphones(not included)insert the 3.5mm mini-stereo plug from the headphones into the PHONES jack on the front panel. The external speakers are automatically disconnected when headphones are in use.

MEMORY BACK-UP

Insert 3 x AA or equivalent batteries in the battery compartment on the underside of the unit. It is used to back-up the memory of the main CPU.



COMPACT DISC

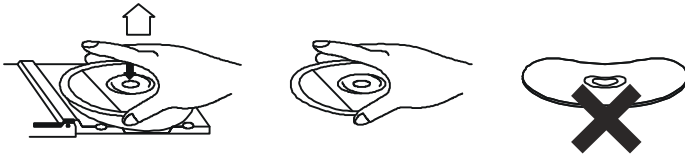
1. Always use a compact discs bearing the mark as shown.



2. Notes on handling discs

Removing the disc from its storage case and loading it.

- * Do not touch the reflective recorded surface.
- * Do not stick paper or write anything on the surface.
- * Do not bend the disc.



3. Storage

- * Store the disc in its case.
- * Do not expose discs to direct sunlight or high temperatures, high humidity or dusty places.

4. Cleaning a disc

- * Should the disc become soiled, wipe off dust, dirt and fingerprints with a soft cloth.
- * The disc should be cleaned from the center to the edge.

FROM THE CENTRE TO THE EDGE



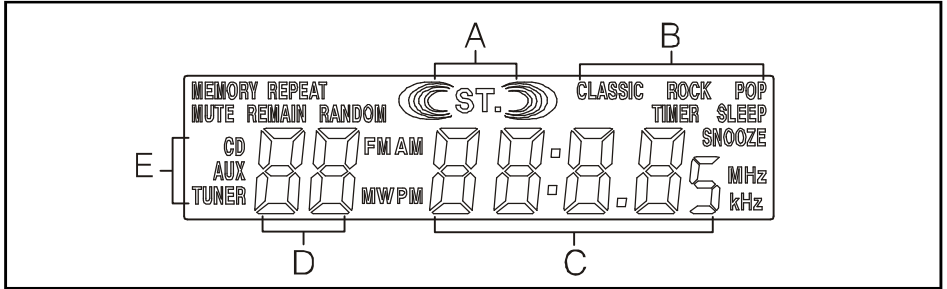
CORRECT

INCORRECT

- * Never use benzene, thinners, record cleaner fluid or anti static spray.
- * Be sure to close the CD door so the lens is not contaminated by dust.
- * Do not touch the lens.

CD DISPLAY WINDOW

- A. STEREO INDICATOR
- B. PRESET EQ INDICATOR
- C. TRACK/TIME INDICATOR
- D. TRACK NUMBER INDICATOR
- E. UNIT FUNCTION (CD, AUX & TUNER) INDICATOR



SPECIFICATION

POWER SUPPLY :	230V 50Hz
OUTPUT POWER :	4.5 WATTS x 2
UNIT DIMENSION :	295 (L) x 246 (W) x 92 (H) mm
SPEAKER BOX DIMENSION :	140 (L) x 185 (W) x 218.5 (H) mm
N. W.:	4.91 kg

RADIO SECTION

FREQUENCY RANGE :	FM 87.5 - 108 MHz
	MW 522 - 1620 kHz

COMPACT DISC SECTION

OPTICAL PICKUP :	3 - BEAM LASER
FREQUENCY RESPONSE :	100Hz - 16kHz

SPECIFICATION SUBJECT TO CHANGE WITHOUT FURTHER NOTICE.